



QUICK START GUIDE



Hirose Financial UK Ltd.

27 Austin Friars

London EC2N 2QP

info@hiroseuk.com

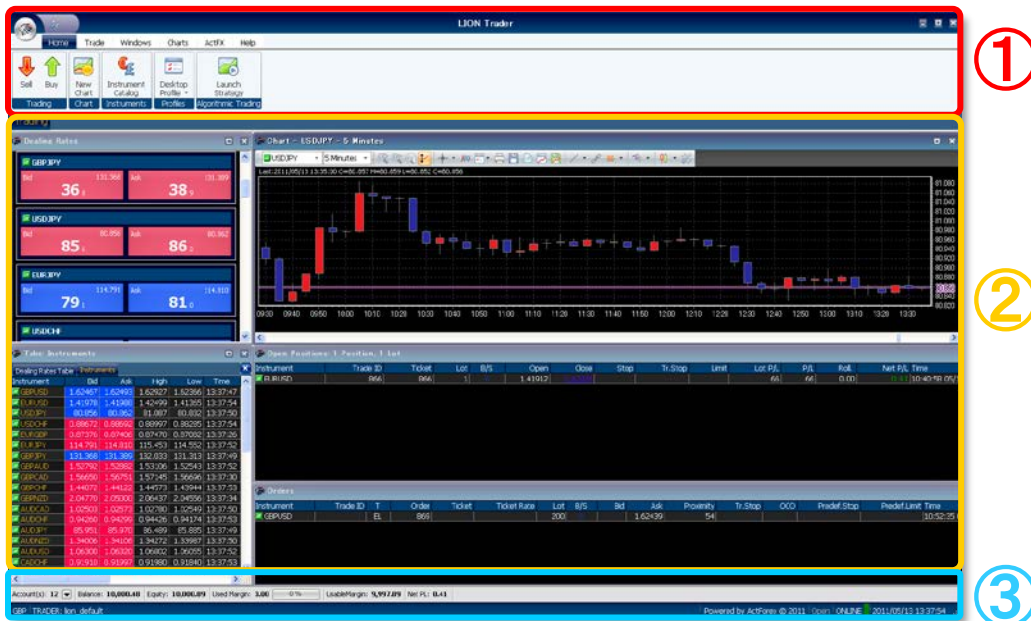
FCA Registration Number 540244

Table of Contents

Basic Information	➤ Initial Screen	P3
	➤ Menu Bar	P3
	➤ Trading Tab	P4
	➤ Account Information Bar	P4
Menu Bar	➤ Home	P5
	➤ Trade	P5
	➤ Windows	P5
	➤ Charts	P6
	➤ ActFX / Help	P6
Trading Guide	➤ Open a New Position	P7
	➤ Types of New Orders	P8, 9
	➤ View Open Positions / Orders	P10
	➤ Change / Removal of Orders	P10
	➤ Close an Open Position	P11
Charts	➤ Major functions on the charts	P12
	➤ Position / Alert settings	P13
	➤ Chart settings	P13
	➤ Technical Indicators	P14
Other Function	➤ One Click Trading	P15

Basic Information

Initial Screen



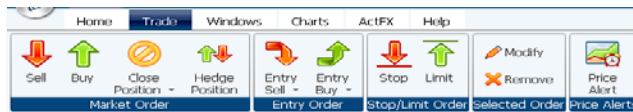
Menu Bar

① Tool Bar **【Home】 【Trade】 【Windows】 【Charts】 【ActFX】 【Help】**

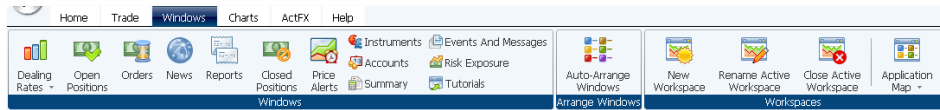
【Home】



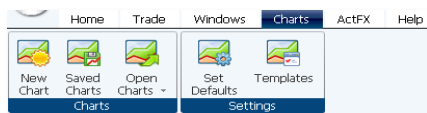
【Trade】



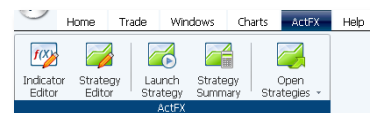
【Windows】



【Charts】



【ActFX】



【Help】



Toolbar makes it easy to quickly locate the tools and options necessary for trading and for performing other common application tasks.

Basic Information

Trading Tab

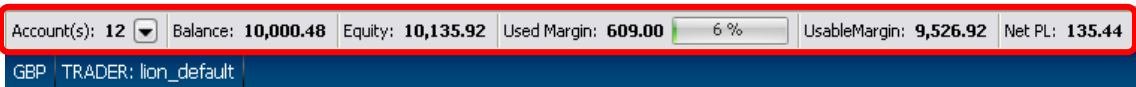
② Trading Platform / Trading from Dealing Rates/Charts



LION Trader offers you the freedom to configure a layout that fits your preferences and trading needs.

Account Information Bar

③ Account Information Bar



【Account(s)】 : Account Number

【Balance】 : Account Balance (Cash in Account)

【Equity】 : Account Equity (Balance + Net unrealised PL)

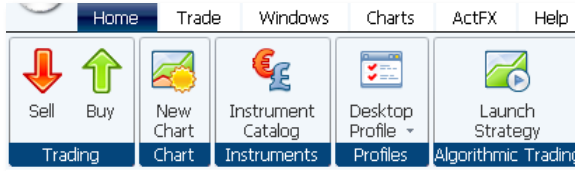
【Used Margin】 : The deposit requirement needed to keep a position open. The Margin Utilization Indicator displays the used margin as a percent of total Equity on the account. If the Margin Utilization Indicator reaches 100% the system will automatically close any open positions.

【Usable Margin】 : Remaining margin available for trade (Equity – Used Margin)

【Net PL】 : Net Profit/Loss (Equity – Balance)

Menu Bar

Home



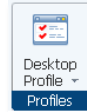
Trading Group (Sell-Buy)
To open a position, just click on the Buy or Sell Button. This will open the New Position Dialog.



Chart Group (New Chart)
Click to open a new chart window.



Instruments Group (Instruments Catalog)
Click to open the Instrument Catalog Window, where you can subscribe to and unsubscribe from instruments

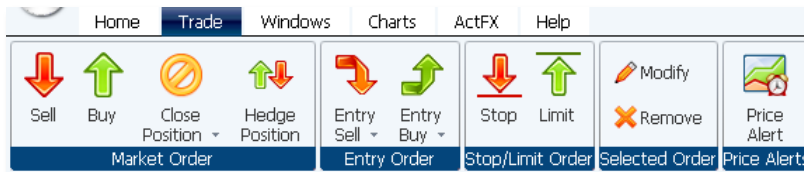


Profiles Group (Desktop Profiles)
Click to manage desktop profiles, or to choose from a list of saved system or custom profiles.



Launch Strategy (Algorithmic Trading Group)
Click to open the Strategy List dialog, which will allow you to select and run an algorithmic trading strategy.

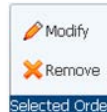
Trade



Market Order Group (Sell-Buy-Close Hedge Position)
To open or close a position, just click on the sell/buy button. You can then place a market order. All open Trades will then show up in the 'Open positions' tab. Click on the 'Close Position' tab to highlight open positions. Highlight a position and click 'OK' to close. Hedge a position in the same way.



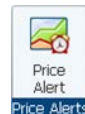
Entry Order Group (Entry Sell-Entry Buy)
When you click on the sell/buy button, you can place an opening stop or limit entry order.



Selected Order Group (Modify- Remove)
Clicking the Modify button allows you to change the price of an order. Clicking on Remove will cancel an existing order.

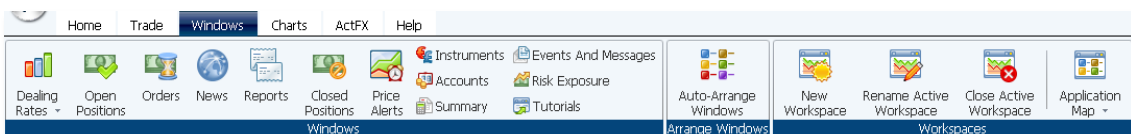


Stop/Limit Order Group (S/L-T/P)
When you click on the Stop button, you can set a Closing Stop order(S/L) or trailing-stop order on your open position. When you click on the Limit button, you can set a Closing Limit order(T/P) on your open position.



Price Alerts Group (Price Alerts)
Click the Price Alert for an Alert to be activated. Once triggered you will be notified by a sound and pop-up box.

Windows

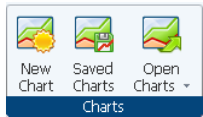
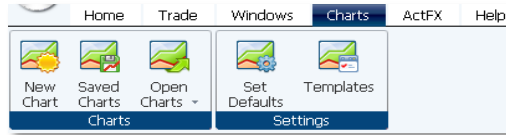


Windows Tab

The Windows tab contains commands related to windows and workspaces. From here you can open and switch to other windows and manage all your windows.

Menu Bar

Charts



New Chart (Chart Group)

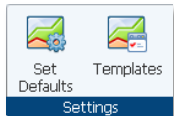
New Chart : You can open a new chart screen after selecting a currency pair and time scale in the chart setting screen.

Saved Charts (Chart Group)

Saved Charts : Find a list of charts you have customised and saved. Open, Rename and Delete charts from here.

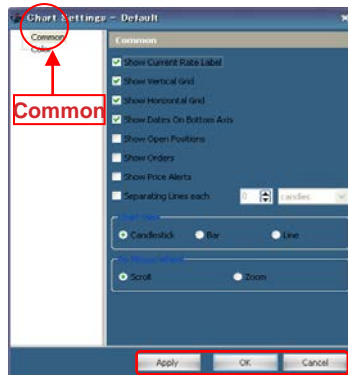
Open Charts (Chart Group)

Open Charts : Click to see a list of currently open charts. Select a chart to switch focus To that chart window.



Set Defaults (Settings Group)

Set Defaults : You can change the display preferences of charts. For example, you can easily reset the background patterns, color of candle charts and lines, etc.



「 Apply 」
: Confirm the new setting that has changed.

「 OK 」
: Execute the new setting that has changed.

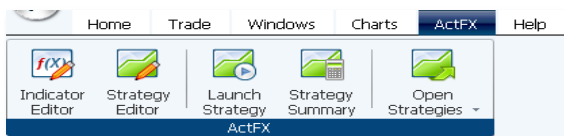
「 Cancel 」
: Cancel the new setting that has not been applied.



Templates (Settings Group)

Templates : Create and combine your own indicator variables to add or delete from charts

ActFX



Trading Strategies

ActFX is a proprietary scripting language to help you write your own strategies, based on PASCAL Language.

Help



Help

Click on Trader Manual to get a complete guide to the platform.

Trading Guide

Open a New Position

When you click on each icon, an order ticket appears; you can then place a Market Order.

When you click on the OK button after determining currency pair (Instrument) and amount (Number of Lots), the order is activated and the executed trade will appear in the 'Open Positions' window.

How to Place Limit Order

You can also place orders from a chart. Place your cursor inside the chart box, then right-click to bring up the order types.

※① Market Order ※② Limit Order

Trading Guide

Type of New Orders

• Market Order

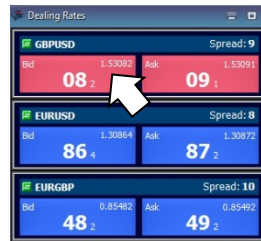
New Position
You will be Selling EUR / Buying USD

Instrument: EURUSD
Account(s): 2
Amount (Lots): 10
Rate: 1.44817

Set Predefined Stop/Limit

Ok Cancel

An order to buy or sell at the prevailing market rate.



Click on Bid or Ask on currency pair you want to open position OR Right click on the chart and choose Buy or Sell for Market order.

• Stop Order

Entry Stop Order
You will be Buying EUR / Selling USD

Instrument: EURUSD
Account(s): 9
Amount (Lots): 1
Rate: 1.35906
Distance in points: 50

Create as OCO for order
 Set Predefined Stop/Limit

Ok Cancel

An order to buy or sell at a worse level than the current price.

A Buy Stop Order can be activated as close as 50 points (5 pips) above the current market. A Sell Stop Order can be activated as close as 50 points (5 pips) below the current market.

Stop order is also known as Stop Loss order (S/L).

• Limit Order

Entry Limit Order
You will be Buying EUR / Selling USD

Instrument: EURUSD
Account(s): 9
Amount (Lots): 1
Rate: 1.35800
Distance in points: 50

Create as OCO for order
 Set Predefined Stop/Limit

Ok Cancel

An order to buy or sell at a more advantageous price than the current market rate.

You can place a Limit Order from as close to 50 points (5 pips) away from the current market price (e.g. from 50 points (5 pips) below for a Buy Limit Order and 50 points (5 pips) above for a Sell Limit order).

Limit order is also known as Take Profit order (T/P).

• OCO Order

Entry OCO Order
You will be Buying EUR / Selling USD

Instrument: EURUSD
Account(s): 12
Amount (Lots): 300
Stop Rate: 1.43203
Limit Rate: 1.43143

Set Predefined Stop/Limit

Ok Cancel

One-Cancels-the-Other Order

A combination of two pending orders where the execution of one immediately cancels the other.

Trading Guide

• Entry Limit / Entry Stop Order

Entry Stop and Entry Limit orders are orders to open a new position at an off-market price.

If that price is reached, the entry order will be triggered and the trader will enter the market (a new position will open).

Entry Limit orders aim at opening positions in the future, when the market price has moved DOWN for a Buy order/UP for a Sell order.

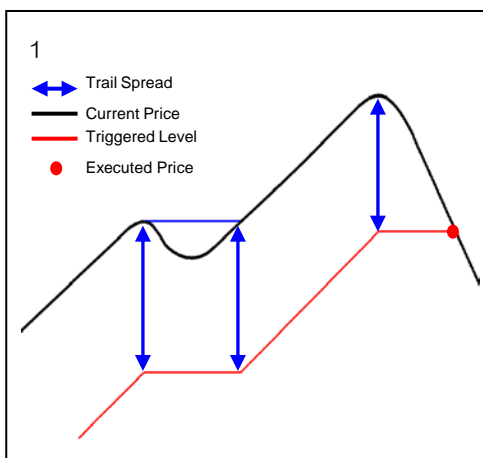
Entry Stop orders aim at opening positions in the future, when the market price has moved UP for a Buy order/DOWN for a Sell order.

• IF Done Order

IF Done Order

You can place your settlement order (limit or stop order) simultaneously when you newly enter into the market for an open position with an order (market, limit, or stop order).

• Trailing Stop Order



A Stop Order that sits a certain distance away from the current market and moves as the market fluctuates in your favour.

Trading Guide

View Open Positions and Orders

You can easily view your open positions and existing orders in the Open Positions window and Orders window.

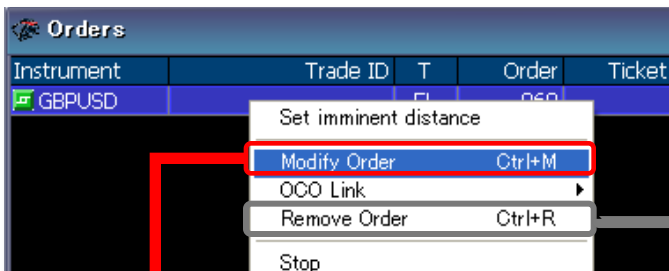
Open Positions: 3 Positions, 208 Lots

Instrument	Trade ID	Ticket	Lot	B/S	Open	Close	Stop	Tr.Stop	Limit	Lot P/L	P/L	Roll	Net P/L	Time
EURUSD	866	866	1	B	1.41912	1.42910				998	998	0.00	6.14	10:40:58 05/13/11
GBPJPY	882	882	200	B	130.968	131.132				164	32,800	0.00	250.13	14:14:52 05/13/11
EURJPY	884	884	2	B	114.471	115.268				797	1,594	0.00	12.15	14:15:07 05/13/11

Orders

Instrument	Trade ID	T	Order	Ticket	Ticket Rate	Lot	B/S	Bid	Ask	Proximity	Tr.Stop	OCO	Predef.Stop	Predef.Limit	Time
GBPUSD		EL	869			200	B		1.62439	168					10:52:35 05/13/11

Change / Removal of Orders



To remove or modify an order simply right click on the currency pair in the Orders window and click on 'Modify Order' or 'Remove Order'

✘ If you want to change a Limit Order to a Stop Order, or vice versa, you must cancel your original order first and then place it with a new order.

Entry Limit Order

Modify Order

Amount (Lots)

Rate <= 1.62482

Distance in points

Ok Cancel

Remove

Do you really want to remove order 869 ?

OK Cancel

Trading Guide

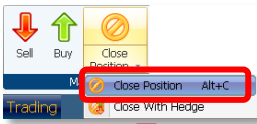
Close an Open Position

You can close your open positions by clicking on the 'Close Position' button or placing an order from the 'Open Positions' window.

Settlement from 'Close Position' button



Select Trade on menu bar and Click "Close Position".



Get to the 'Close Trades' screen by clicking on the 'Close Position'.

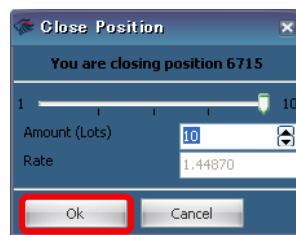


Select the currency pair and click OK to close the position.

Settlement from 'Open Positions' window



Right-click on the currency pair you want to close. A 'Close Position' box opens.



The 'Close Position' order is executed when you click the OK button.

How to Place a Stop / Limit Order to close an existing open position

From Menu Bar



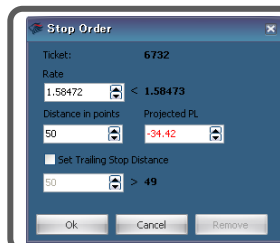
Click on the Stop/Limit button. A 'Set Stop Order' window appears. Highlight the currency pair and click 'Ok'.

Instrument	Trade ID	Ticket	Lot	B/S	Open
GBPJPY	882	882	200	B	130.968
EURJPY	884	884	2	B	114.471
EURUSD	910	910	300	B	1.42911
GBPUSD	911	911	200	B	1.62439

From Open Position Window



Right click on a currency pair in the 'Open Positions' window. An information box appears; click on 'Limit' or 'Stop'.



Input the Stop or Limit price you want and press 'OK'. The order can be checked and confirmed in the 'Open Positions' window.

Charts

Major Functions on the Charts



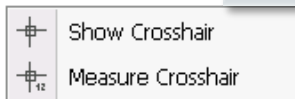
You can modify the size of the chart screen.
 (**Zoom In / Zoom Out / Zoom Reset**)



After modifying the chart screen with the Zoom function you can Automatically rescale the vertical axis of the chart. (**Vertical Auto Scale**)



Horizontal and vertical lines of crosshair cursor show the time, date and price. (**Show Crosshair**)



The crosshair cursor dragged on the chart screen allows you to measure One point in time to another.
 (**Measure Crosshair**)



Allows you to set up your own technical indicators from a range of over 40 methodologies. (**Setup Indicators**)



Once you have set up a template you can use it on multiple charts.
 (**Apply Template**)



Print Charts from this icon.
 (**Print**)



You can save chart data to an excel spreadsheet file. The data that you can collect includes Date, Time, Open, High, Low, Close values.
 (**Save Chart Data To File**)



Export chart data into a new window.
 (**View Chart Data In Table**)



You can save the current chart as picture and also under a new file name
 (**Save Current Chart**)



You can draw trend lines and other features on the chart, show linked objects and remove some or all easily.



You can set your chart to show open positions, open orders and alert lines.
 (**Show Open Positions / Show Orders / Show Price Alerts**)



You can switch chart patterns simply by selecting one of three alternatives, namely candlestick, bar and line charts.
 (**Candlestick / Bar / Line**)



Recreate the visual strategy of your chart screen by changing colors of the background and lines and many other variables.
 (**Chart Settings**)

Charts

Position and Alert Settings

You can set your chart screen to show open positions, open orders and alert lines.
(Positions, Orders, and Alert Lines)

Chart Screen



△ represents 'Buy'.
▽ represents 'Sell'.

Positions / Orders
Number within △▽ represents 'Lots'.



(Show Open Positions)
: This mark represents your open position, with the size shown.



(Show Orders)
: This mark represents an outstanding closing order with size shown .



(Show Orders)
: This mark represents an outstanding entry order with size shown.

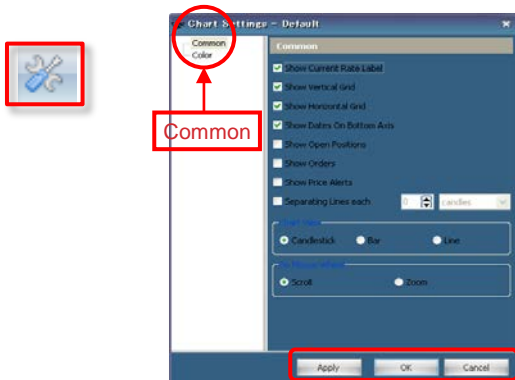


(Show Price Alerts)
: This represents an Alert. You are notified with sound when the price touches the level indicated.

Modifying Chart Screen

Chart Settings & Set Defaults

You can modify your chart screen by changing colors of background, lines and chart variables by clicking on the 'Chart Settings' or 'Set Defaults' icons.



'Apply'
You can confirm the screen after modifying.

'OK'
Execute the new setting after modifying.

'Cancel'
Delete the change or modification.

Charts

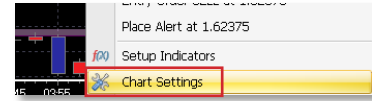
Technical Indicators

You can set your own technical analysis after selecting your favorite analyzing indicators from the list. (**Setup Indicators**)



When you click on the tool bar of the chart screen or right-click on the chart, you can see 'Setup Indicator'.

Or Right-click on the chart



Technical Indicators

All Indicators

- Accelerator/Decelerator Osc
- ADX
- Alligator
- Aroon
- Auto Trendlines
- Average True Range
- Awesome Oscillator
- Bollinger Bands
- Chandelier Stop
- Commodity Channel Index
- DeMarker
- Dual Moving Averages
- Engulfing
- Envelopes
- Flipit
- Fractals
- Gann Swing Chartist
- Gator
- Hi Lo Activator
- Ichimoku Kinko Hyo
- Kairi
- Keltner Channel
- Linear Regression
- MACD/OsMA
- Momentum
- Morning and Evening Star
- Moving Average
- Parabolic SAR
- Perry Kaufman's Adaptive M
- Pivot Points
- Price Channel
- Rate Of Change
- RAVI
- Relative Strength Index
- Standard Deviation
- Stochastic
- Stochastic RSI
- T3 Tilson
- TRIX
- Tweezer
- Weighted Close
- Williams Percent Range

Chart Indicators - GBPUSD - 5 Minutes

All Indicators	Active Indicators
<ul style="list-style-type: none"> Alligator Aroon Auto Trendlines Average True Range Awesome Oscillator Bollinger Bands Chandelier Stop Commodity Channel Index DeMarker Dual Moving Averages Engulfing Envelopes Flipit Fractals Gann Swing Chartist Gator Hi Lo Activator Ichimoku Kinko Hyo 	<p>No Selected Indicators</p>

Select to transfer to Active Indicators

Chart Indicators - GBPUSD - 5 Minutes

All Indicators	Active Indicators	Ichimoku Kinko Hyo
<ul style="list-style-type: none"> Gator Hi Lo Activator <li style="border: 1px solid red;">Ichimoku Kinko Hyo Kairi Keltner Channel Linear Regression MACD/OsMA Momentum Morning and Evening Star Moving Average Parabolic SAR 	<ul style="list-style-type: none"> <li style="border: 1px solid red;">Ichimoku Kinko Hyo 	<p>Ichimoku Kinko Hyo</p> <p>Tenkan Period: 9 Color: Red</p> <p>Kijun Period: 26 Color: Blue</p> <p>Senkou Span A Color: Silver</p> <p>Senkou Span B Period: 52 Color: Black</p> <p>Chikou Span Color: Lime</p>

Select Ichimoku kinko hyou and then click on the > to transfer it to Active Indicators.

Clicking the OK button and an indicator will appear in the chart window.

Select a period of time and colours to your preference.

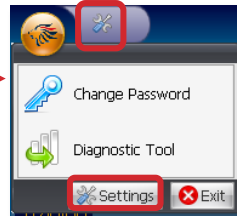
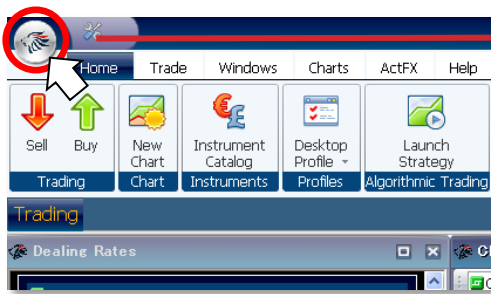
Other Functions

One Click Trading

You can place your order with one click from the rate panel after setting it up. When you try to place an order with the one click function, be careful not to place erroneous orders.

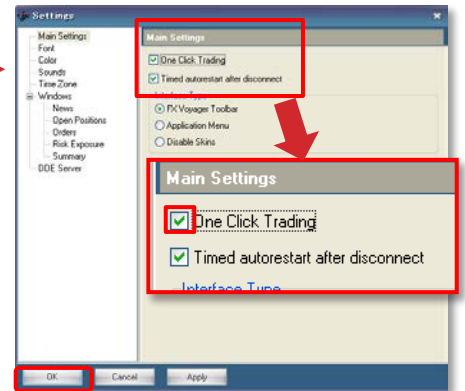
Placing an Order with One Click

Click Here



Click on Settings or the icon

A setting screen appears.



Click on 「OK」 to complete



An edit box for inputting the number of lots will appear on the rate panel; you can now place an order with one click. Just click on the Bid or Ask side and your order will be executed immediately.