



MetaTrader 4

PLATFORM MANUAL FOR PC USER

Table of Contents

1. How to install and login MetaTrader 4 on PC	page 3
2. How to open a Buy/Sell Order at the current market price (Market Order)	page 8
3. How to open a Market Order in just one click (Set up One Click Trading)	page 11
4. How to close an open position at the current market price	page 14
5. How to open a new chart	page 17
6. How to change chart type	page 21
7. How to zoom in or zoom out a chart	page 23
8. How to change timeframe of the chart	page 25
9. How to insert technical indicator to chart	page 27
10. How to modify chart appearance	page 32
11. How to save my chart settings and apply it to another chart	page 34

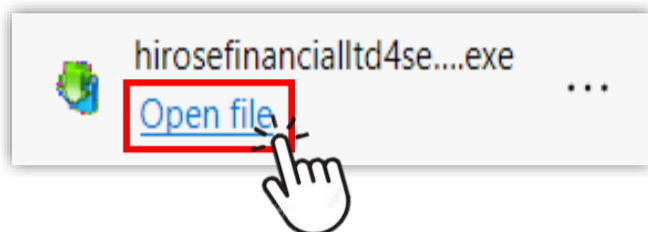
1. How to install and login MetaTrader 4 on PC

STEP 1 Download MetaTrader 4 application to your PC

- 1 Click the link below to download the application.

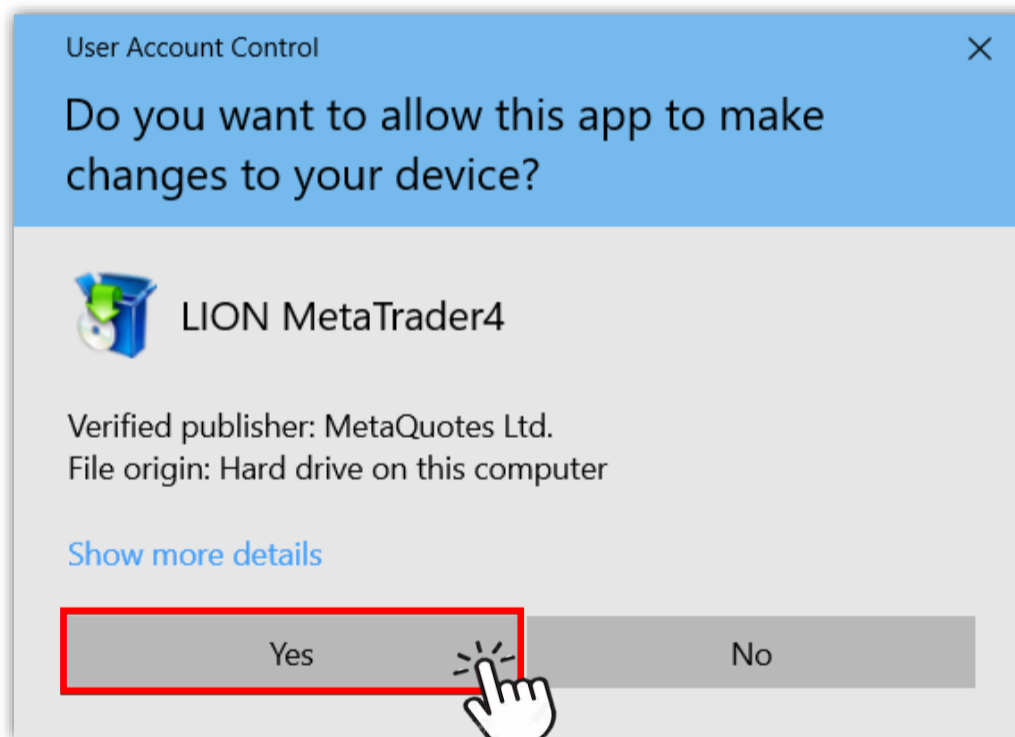
<https://download.mql5.com/cdn/web/7652/mt4/hirosefinancialtd4setup.exe>

- 2 Click the file **hirosefinancialtd4setup.exe** to install the application.



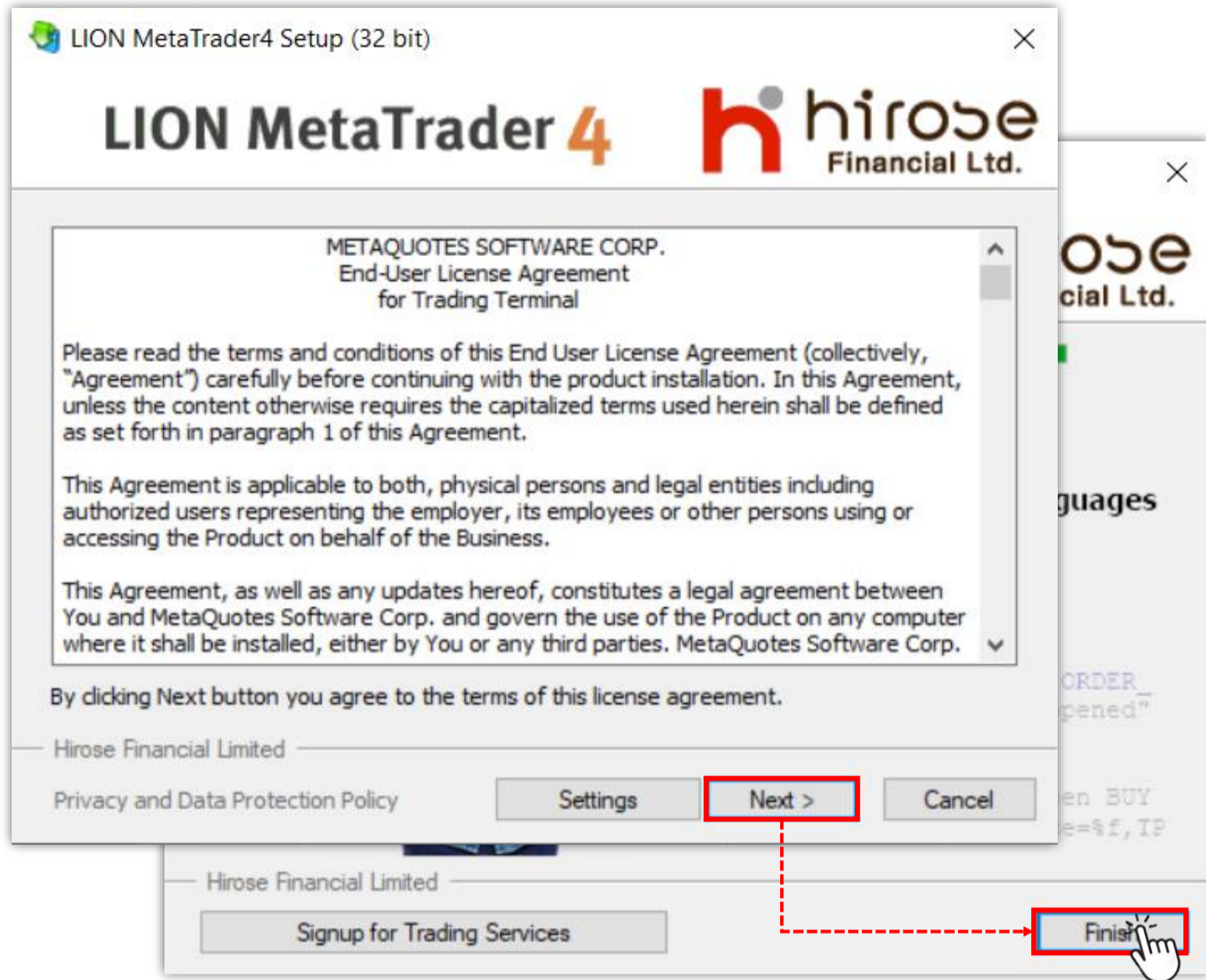
STEP 2 Install MetaTrader 4 application to your PC

- 1 Click **Yes** to allow application to be installed on your PC.



- An installation window will appear. Please click **Next**.

When the installation process is completed, please click **Finish**.

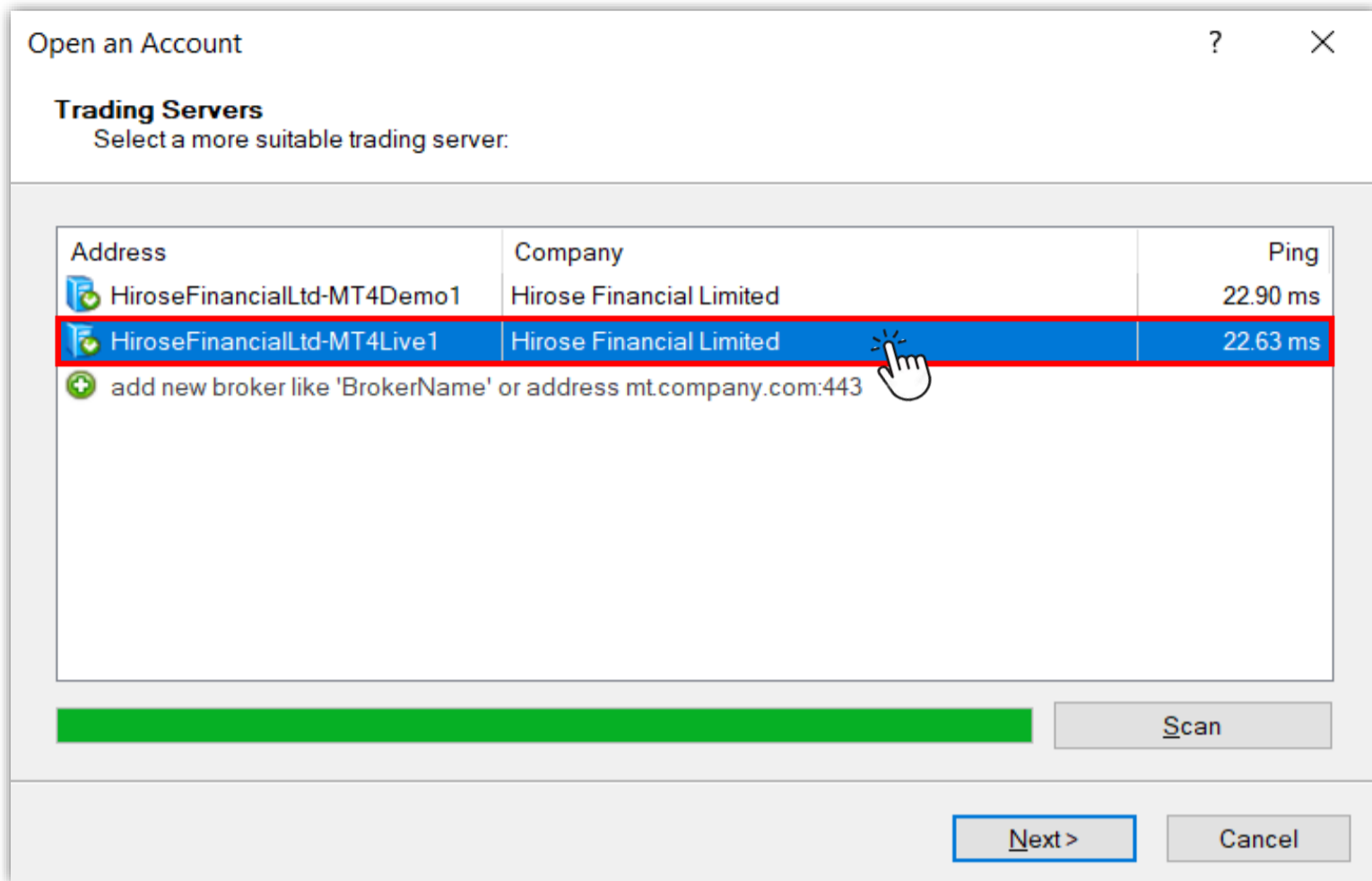


- If MetaTrader 4 platform doesn't run automatically when the installation is completed, please go to your desktop and open MetaTrader 4 platform from the shortcut with Hirose's logo.

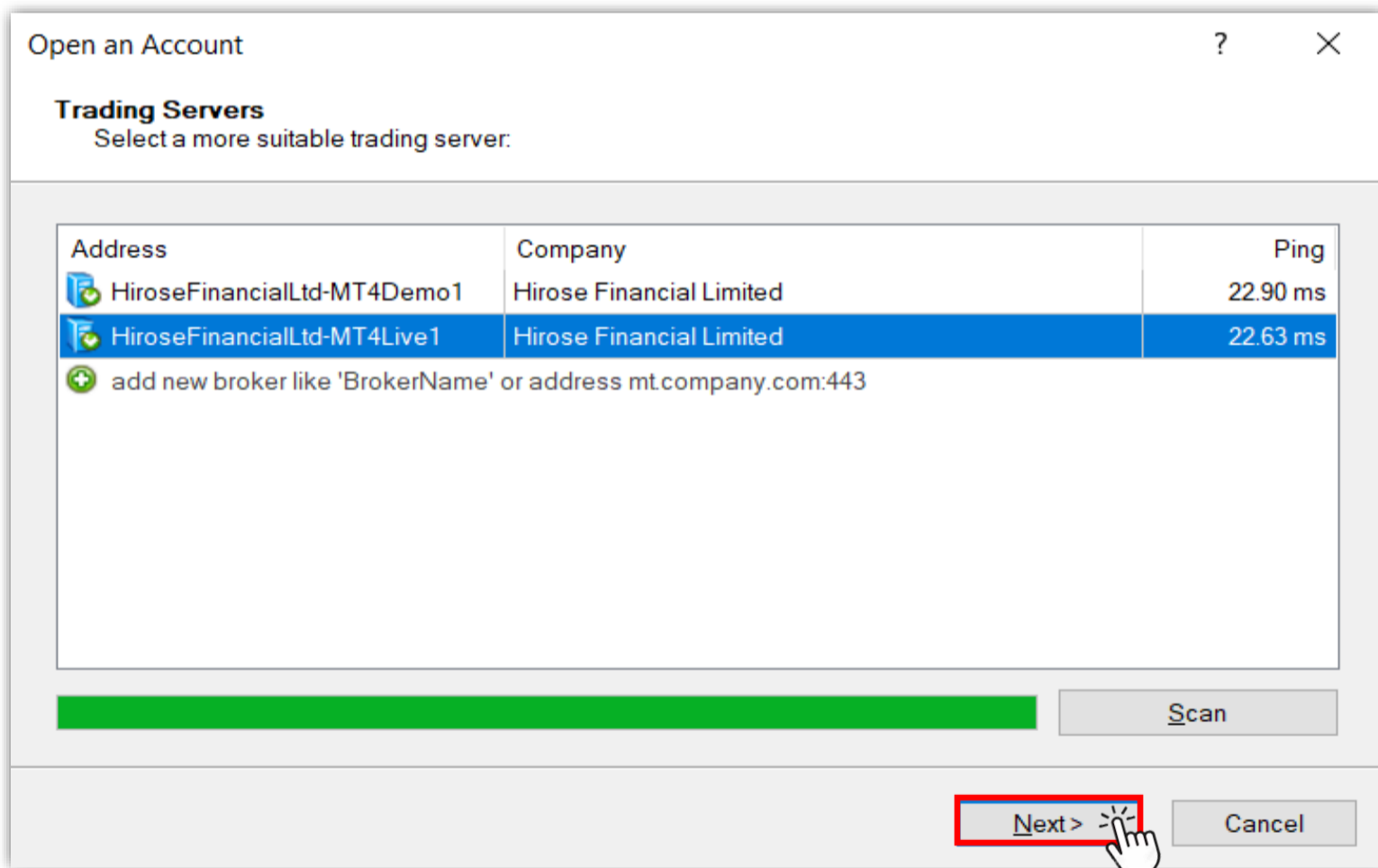


STEP 3 Login to your **MetaTrader 4 Live Trading account**

- 1 Please select **HiroseFinancialLtd-MT4Live1** server by clicking it.



- 2 After the server has been chosen, please click **Next**.



3 Please select **Existing trade account** to fill in your login details.

Open an Account ? X

Select account type
To start working an account is required:

To start working, you need a valid trade account. If you don't have it, you can create a demo or real account by selecting the corresponding option below and pressing 'Next':

Existing trade account

Login: [REDACTED]

Password: [REDACTED] Save password

Server: HiroseFinancialLtd-MT4Live1

New demo account
 New real account

< Back Finish Cancel

4 Please enter your **Login** (example: 3xxxxxxx) and **Password**.

Open an Account ? X

Select account type
To start working an account is required:

To start working, you need a valid trade account. If you don't have it, you can create a demo or real account by selecting the corresponding option below and pressing 'Next':

Existing trade account

Login: [REDACTED]

Password: [REDACTED] Save password

Server: HiroseFinancialLtd-MT4Live1

New demo account
 New real account

< Back Finish Cancel

For the first time login, please enter your **Login ID** and the **temporary Password** that you have received in the email from Hirose.

5 After filling all the information, click **Finish**.

Open an Account

Select account type
To start working an account is required:

To start working, you need a valid trade account. If you don't have it, you can create a demo or real account by selecting the corresponding option below and pressing 'Next':

Existing trade account

Login: [REDACTED]

Password: [REDACTED] Save password

Server: HiroseFinancialLtd-MT4Live1

New demo account

New real account

< Back Finish Cancel

If you want to save your login details, please tick **Save Password**.

Once this has been completed you will have full access to the Platform.

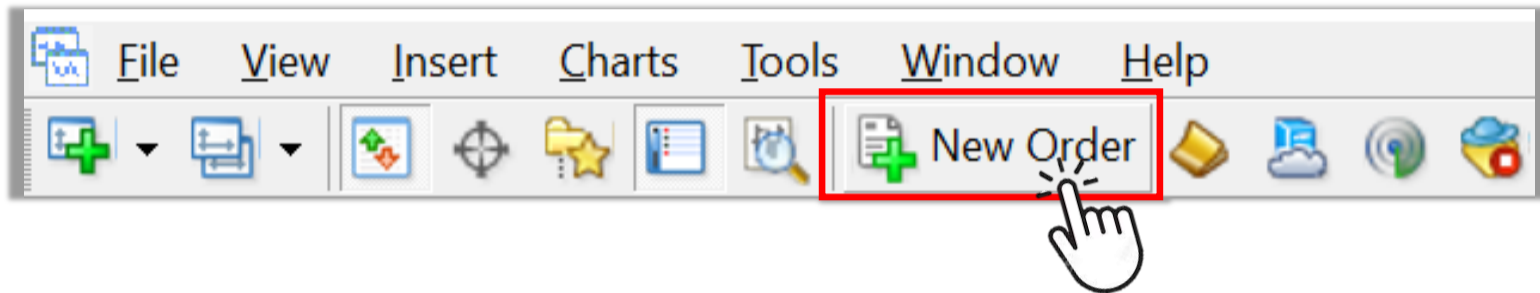
2. How to open a Buy/Sell Order at the current market price (Market Order)

A **Market Order** is a type of order where you can open a Buy or Sell Order immediately at the current market price.

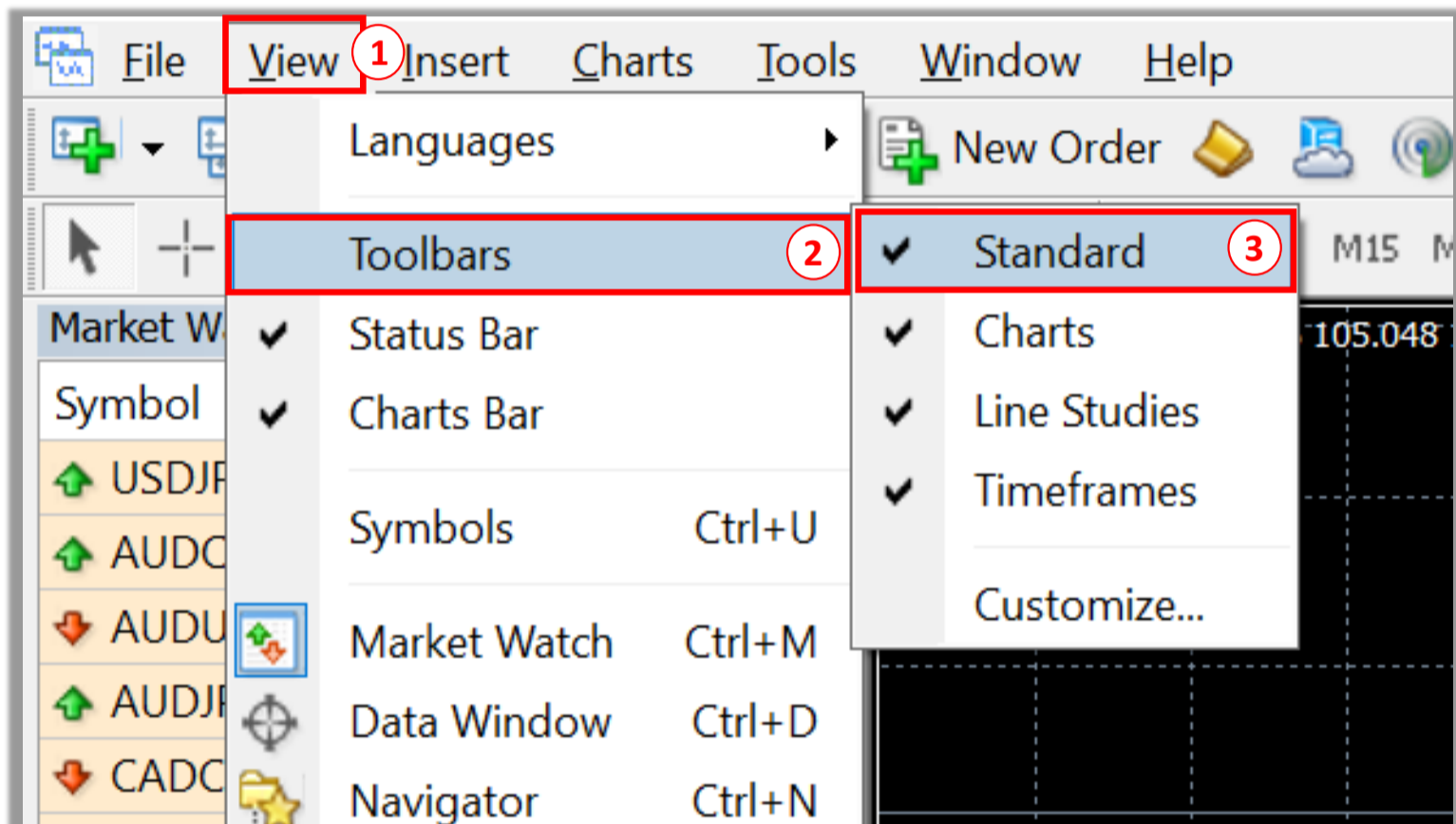
Method 1

On Toolbars located on the top of the platform screen

STEP 1 Click **New Order** icon

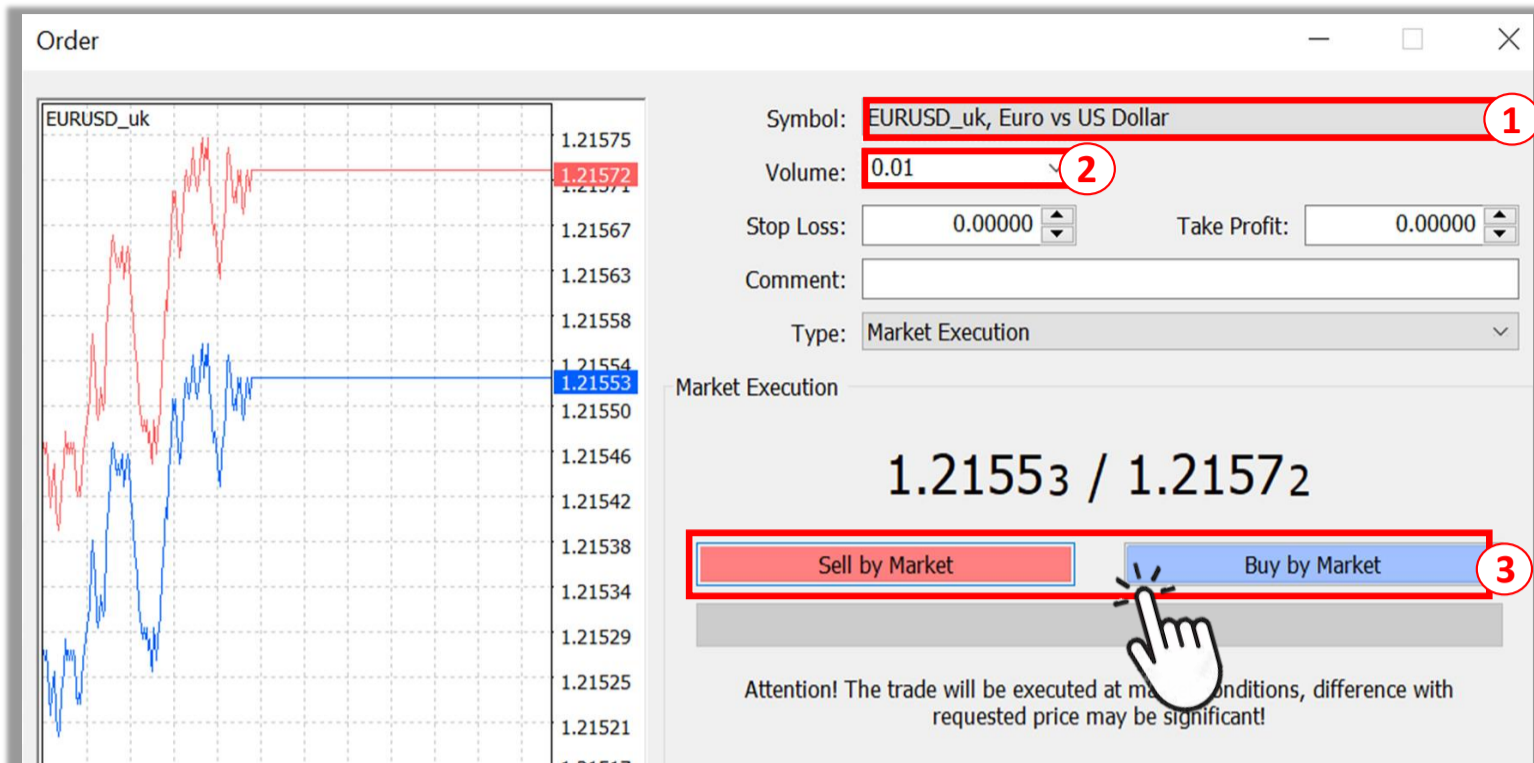


Note: If you don't see New Order icon on your screen, please follow the below instructions.



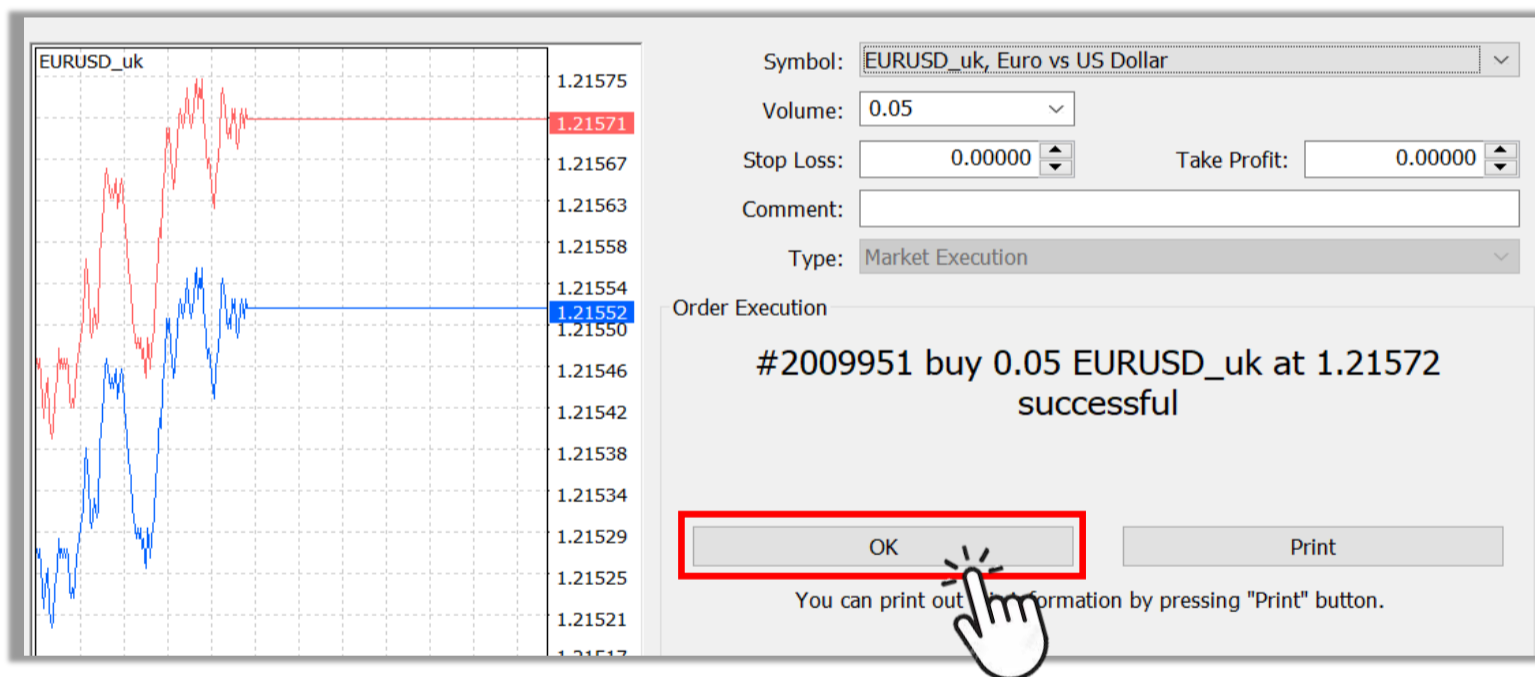
- 1 Click **View** on Menu bar
- 2 Click **Toolbars**
- 3 Click to put a checkmark (✓) in **Standard**

STEP 2 Set up your order



- ① Select the currency pair you would like to trade at **Symbol**
- ② Input the volume you would like to trade at **Volume** (Minimum: 0.01 lot)
- ③ Click **Sell by Market** if you would like to execute Sell Order with the current market price
Click **Buy by Market** if you would like to execute Buy Order with the current market price

STEP 3 Click **OK** to complete



After your order is opened successfully, your order will be shown above the account balance bar in Trade tab of the Terminal window with current market price.

Order #	Time	Type	Size	Symbol	Price	S / L	T / P	Price	Commission	Swap	Profit
2009951	2021.01.20 09:48:31	buy	0.01	eurusd_uk	1.21572	0.00000	0.00000	1.21553	0.00	0.00	-0.70

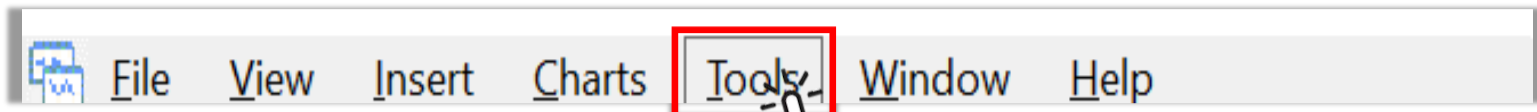
Balance: 100 000.00 GBP Equity: 99 967.93 Margin: 222.38 Free margin: 99 745.55 Margin level: 44953.80%

Note: Terminal window is located at the bottom of the platform screen.
(Press Ctrl+T if you don't see Terminal window on your screen)

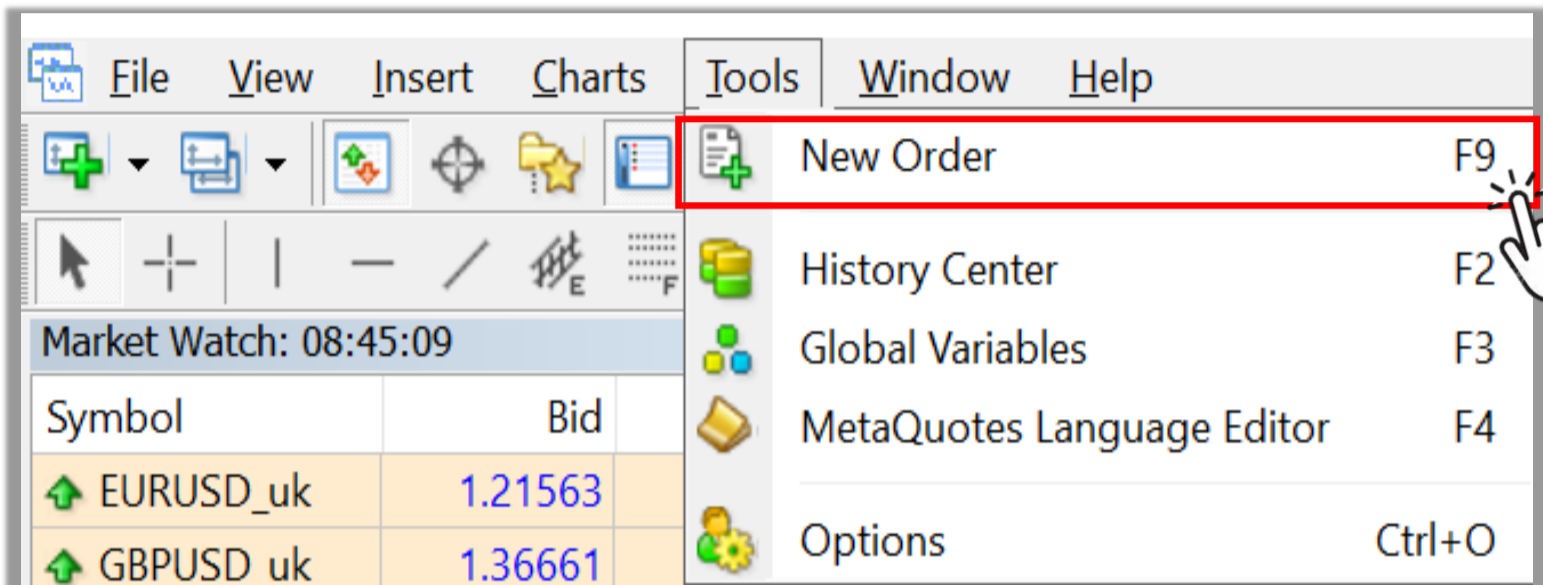
Method 2

On Menu bar located on the top of the platform screen

STEP 1 Click **Tools**



STEP 2 Click **New Order**

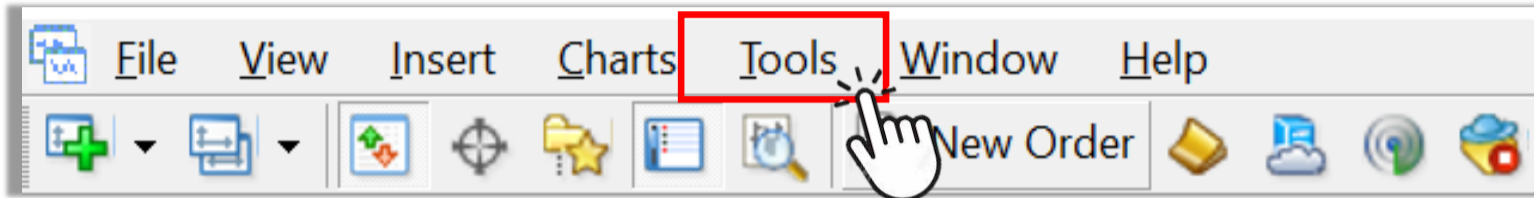


STEP 3 Set up your order (as same as Step 2-3 of Method 1)

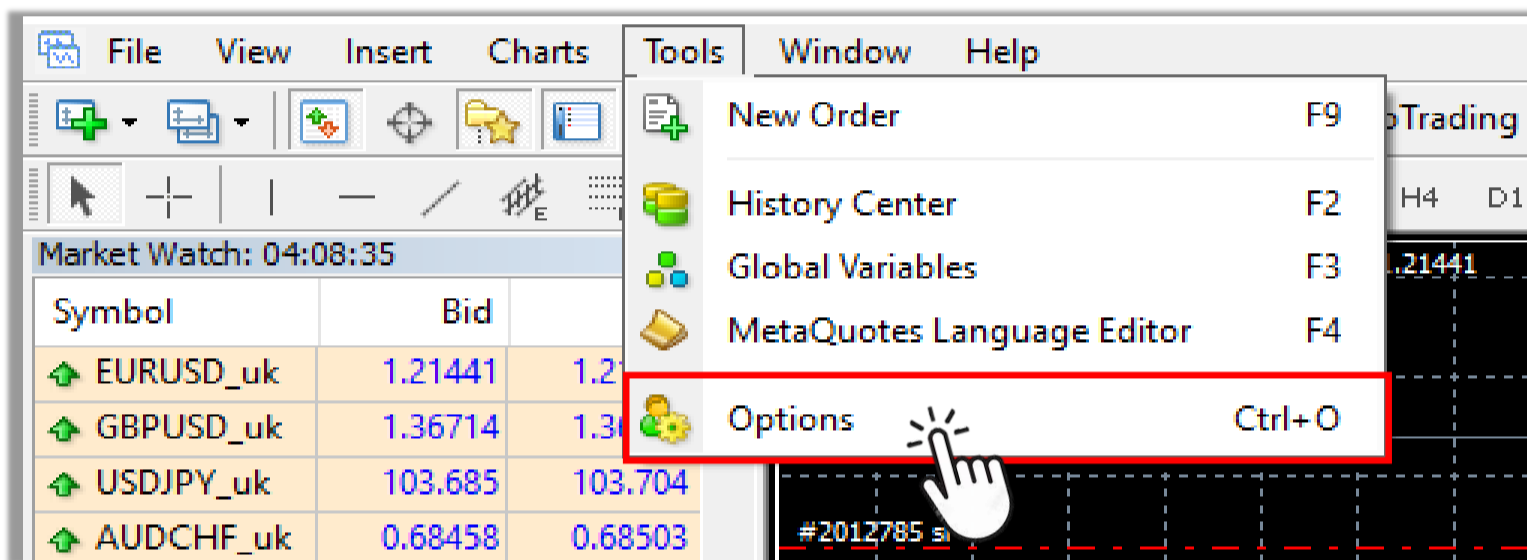
3. How to open a Market Order in just one click (Set up One Click Trading)

A **Market Order** is a type of order where you can open a Buy or Sell Order immediately at current market rate. Setting up **One Click Trading** allows you to open a Buy or Sell Order fast in just one click so that you can get the price you want timely before the market rate changes again.

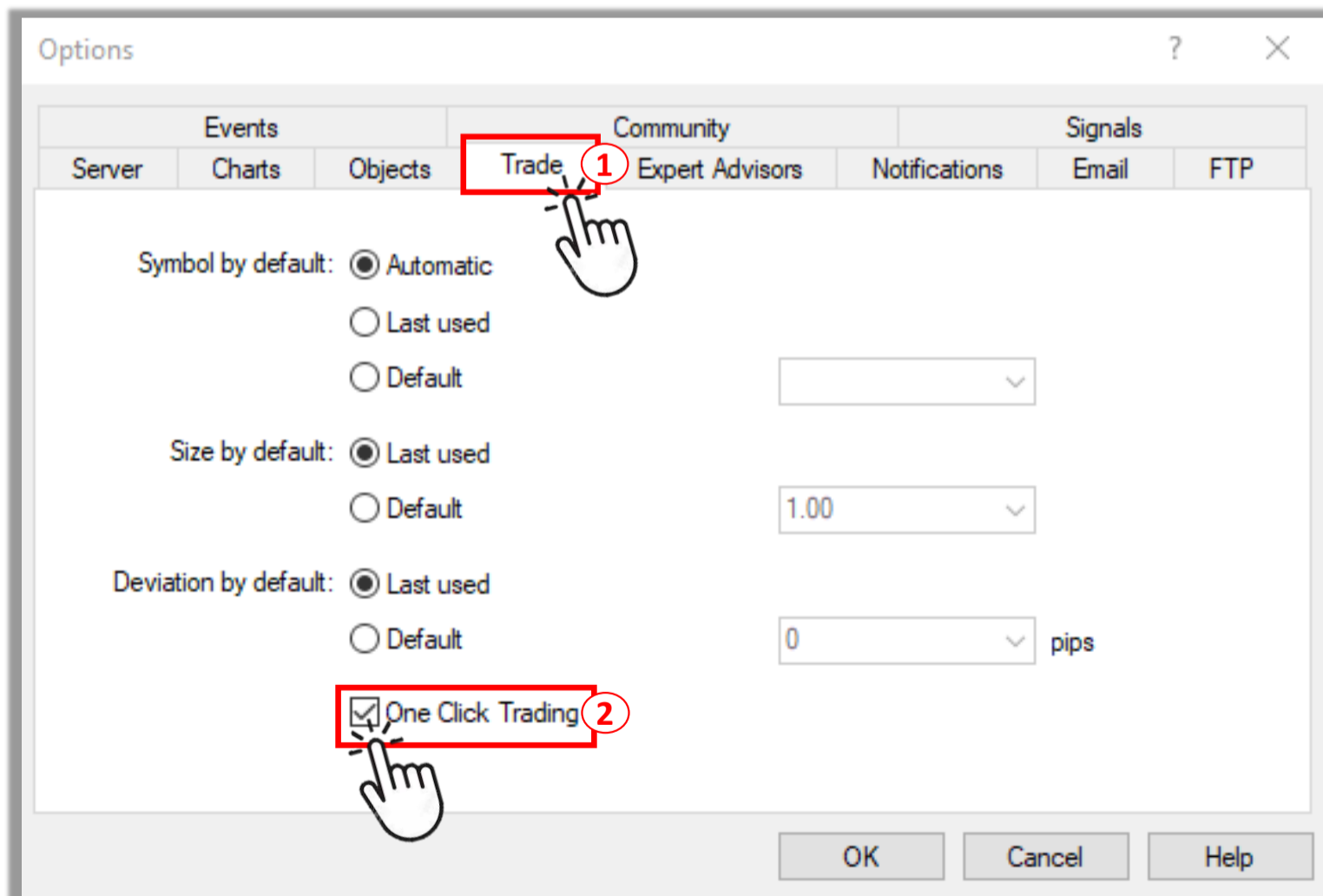
STEP 1 Click **Tools** on the Menu bar located on the top of the platform screen



STEP 2 Choose **Options**

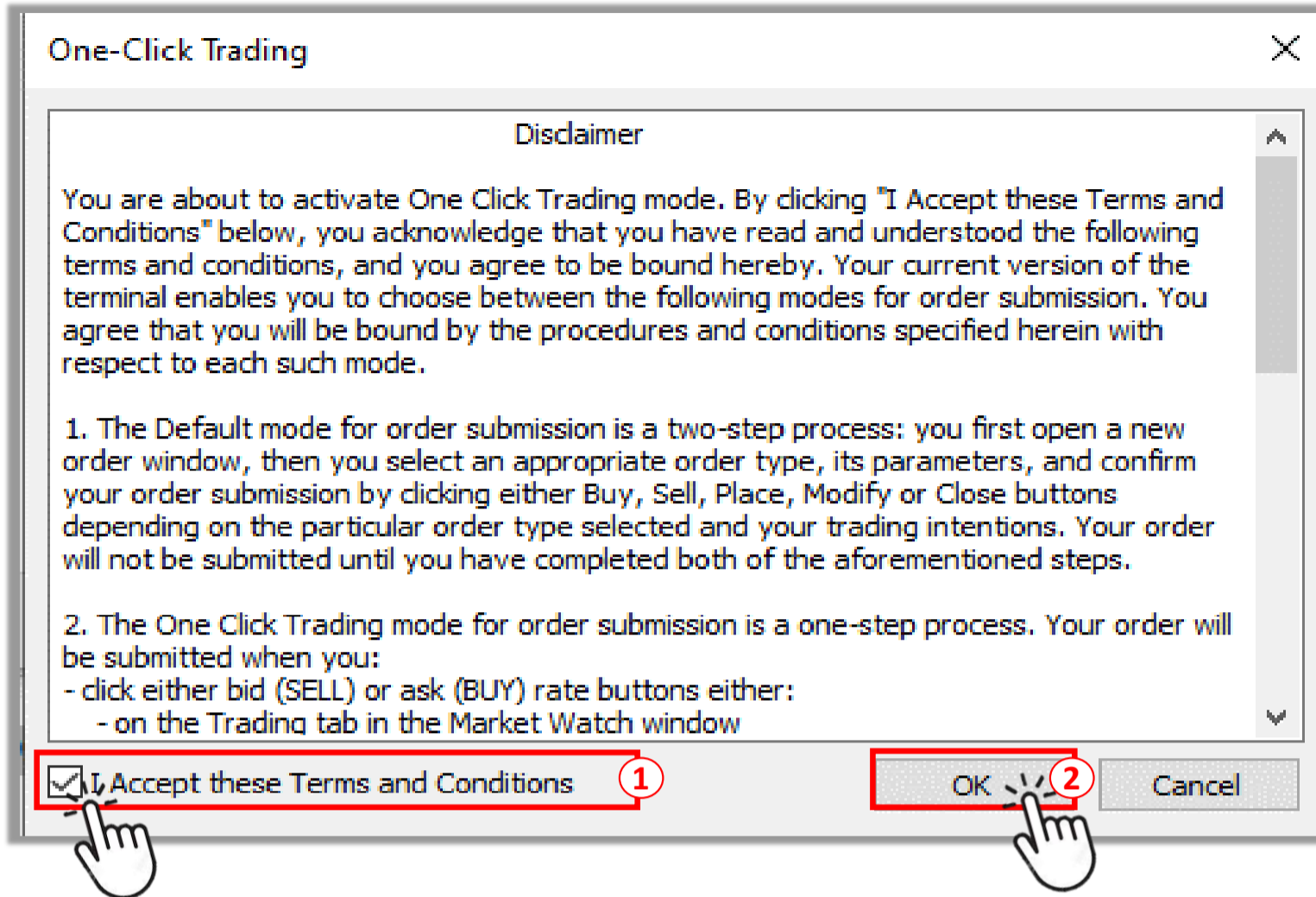


STEP 3 Set up **One Click Trading**



- ① Choose **Trade** tab
- ② Click on to put a checkmark (✓) in the box

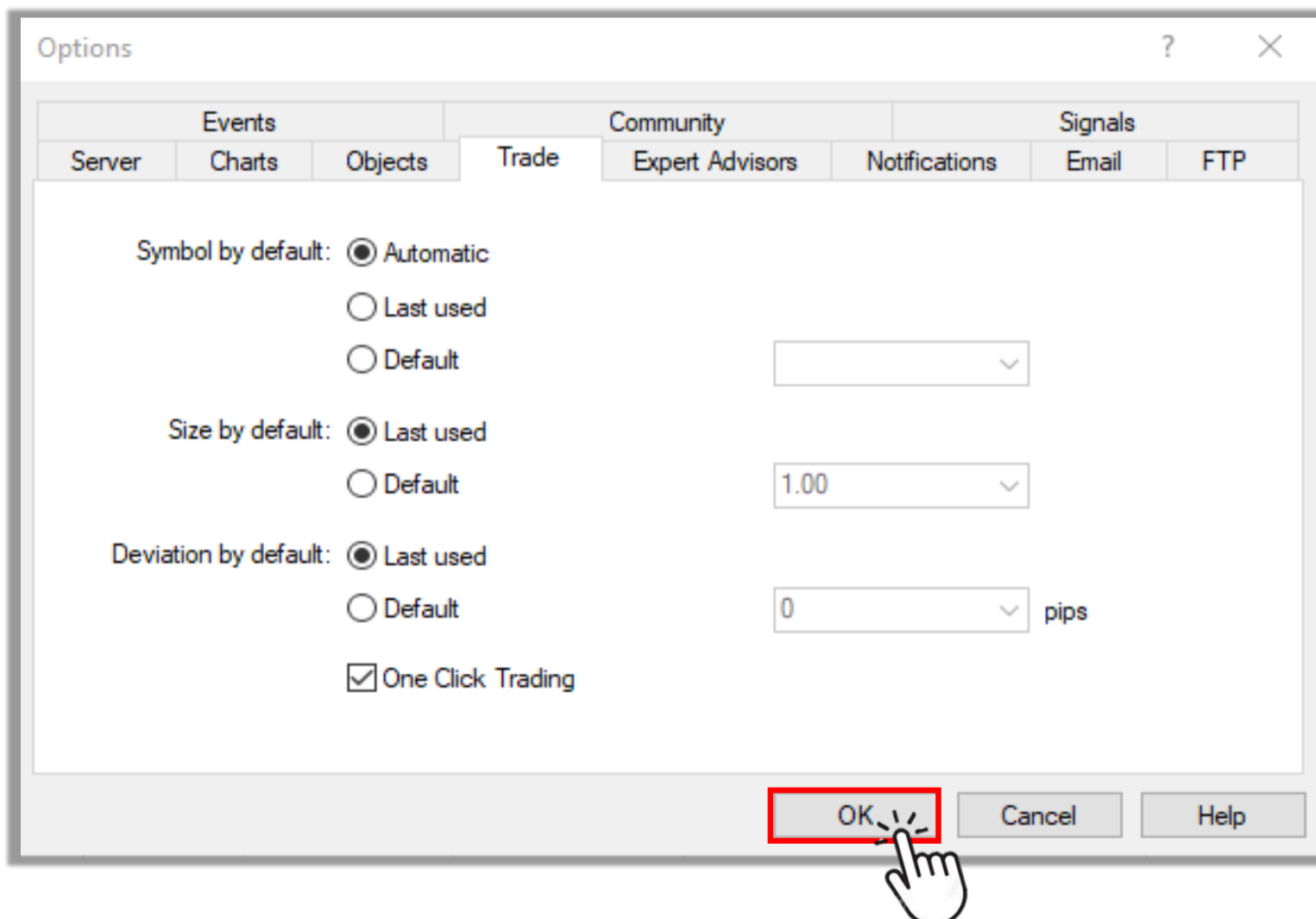
STEP 4 Confirm Terms and Conditions



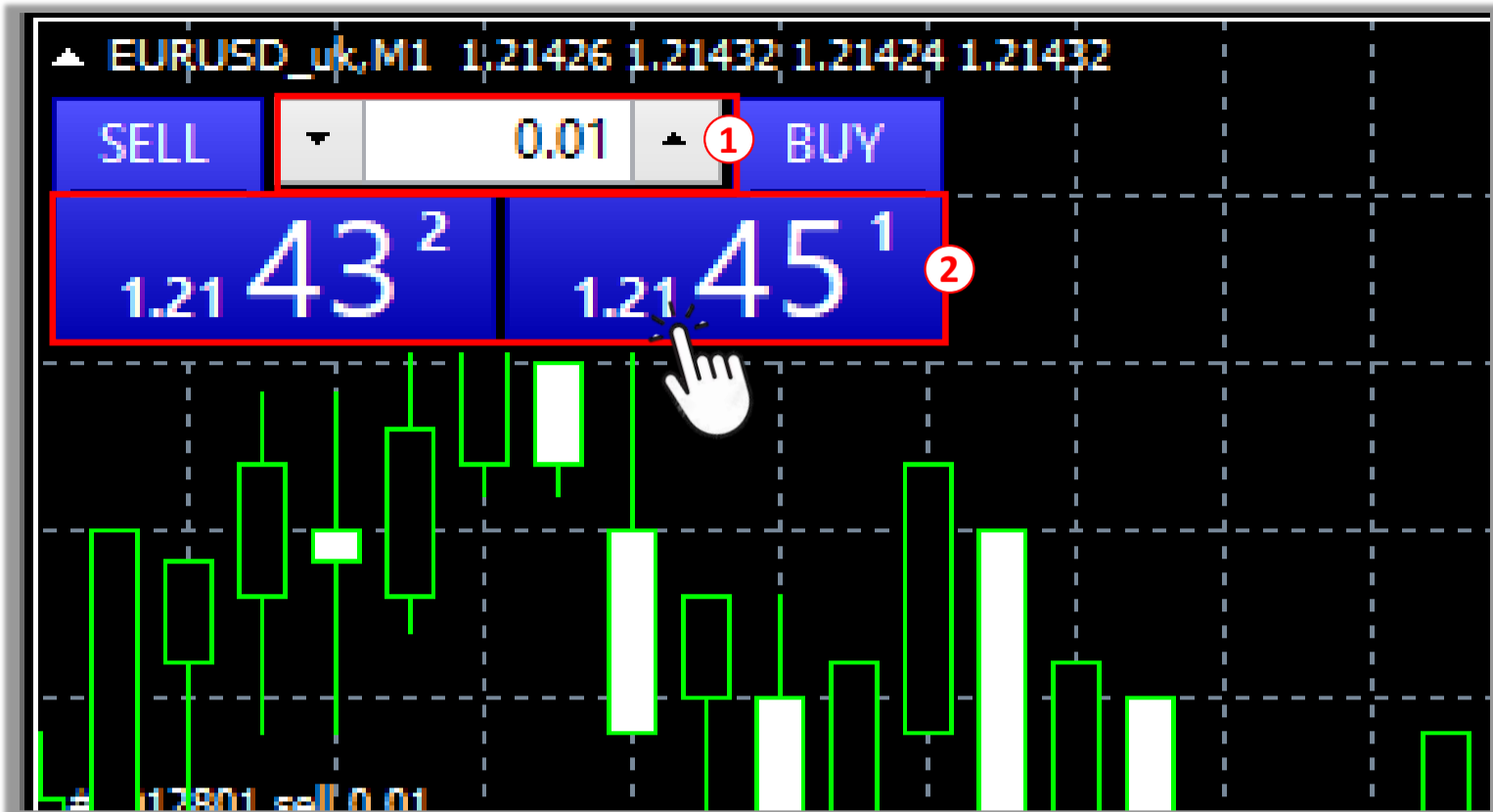
① Click on to put a checkmark (✓) in the box if you accept the Terms and Conditions to use One Click Trading

② Click **OK**

STEP 5 Click **OK** to complete



You can now open a Market Order in just one click on the Price panel located on the top left of the chart.
(Press Atl+T if you don't see the Price panel on your screen)



- ① Input the volume you would like to trade (Minimum: 0.01 lot)
- ② Click **SELL** if you would like to execute a Sell Order with the current market price
Click **BUY** if you would like to execute a Buy Order with the current market price

After your order is opened successfully, your order will be shown above the account balance bar in Trade tab of the Terminal window with current market price.

Order	Time	Type	Size	Symbol	Price	S / L	T / P	Price	Commission	Swap	Profit
2009951	2021.01.20 09:48:31	buy	0.05	eurusd_uk	1.21572	0.00000	0.00000	1.21553	0.00	0.00	-0.70
Balance: 100 000.00 GBP Equity: 99 967.93 Margin: 222.38 Free margin: 99 745.55 Margin level: 44953.80%											-32.07

Note: Terminal window is located at the bottom of the platform screen.
(Press Ctrl+T if you don't see Terminal window on your screen)

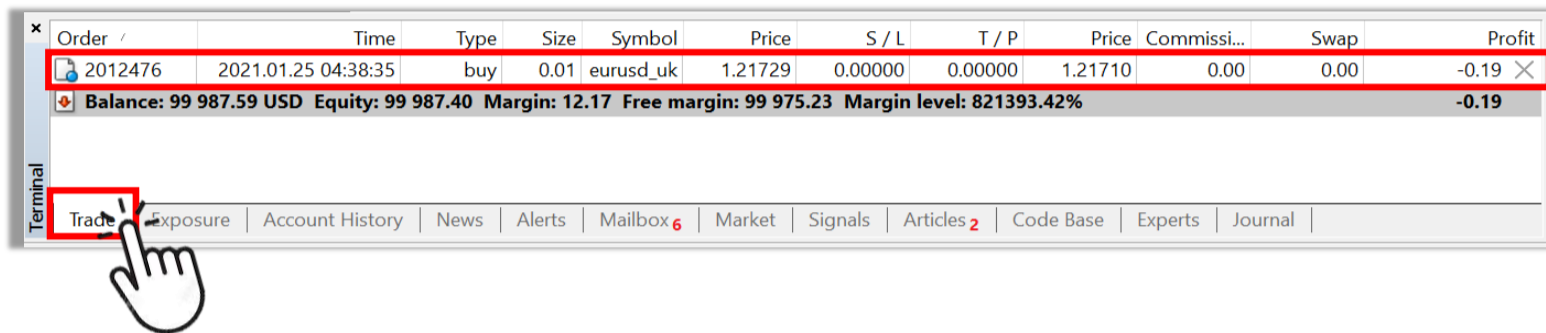
4. How to close an open position at the current market price

An **open position** is an active order which can be either Buy or Sell Order. If the current market price moves in your favor, the open position will generate profit. If the current market price do not move in your favor, the open position will suffer loss.

Method 1

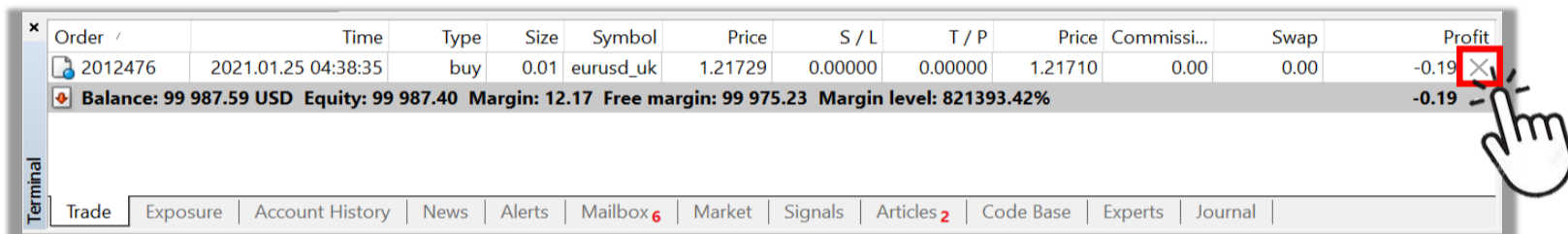
In Terminal window located at the bottom of the platform screen
(Press Ctrl+T if you don't see Terminal window on your screen)

STEP 1 Select **Trade** tab. Open positions are located above the account balance bar.

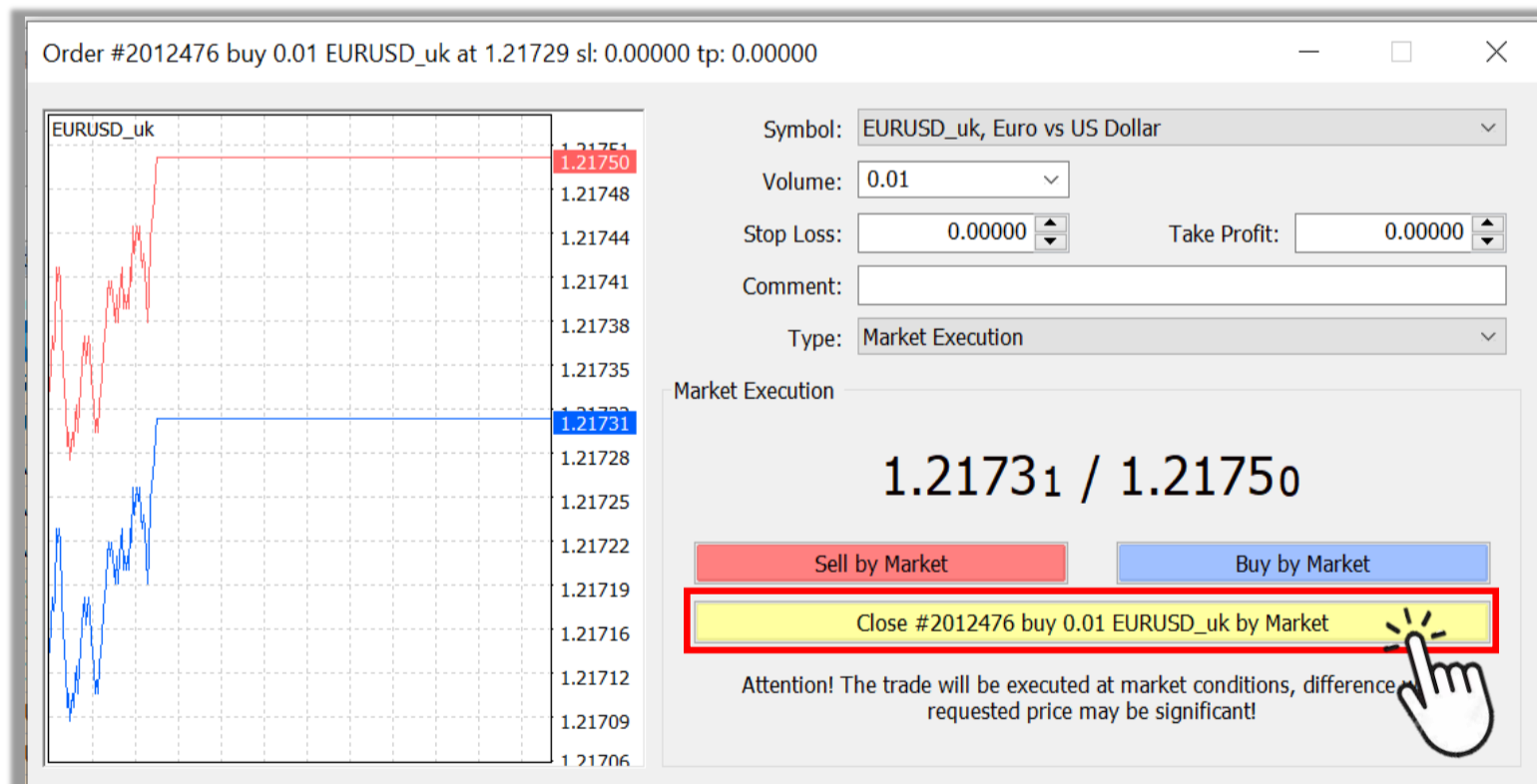


List of open positions

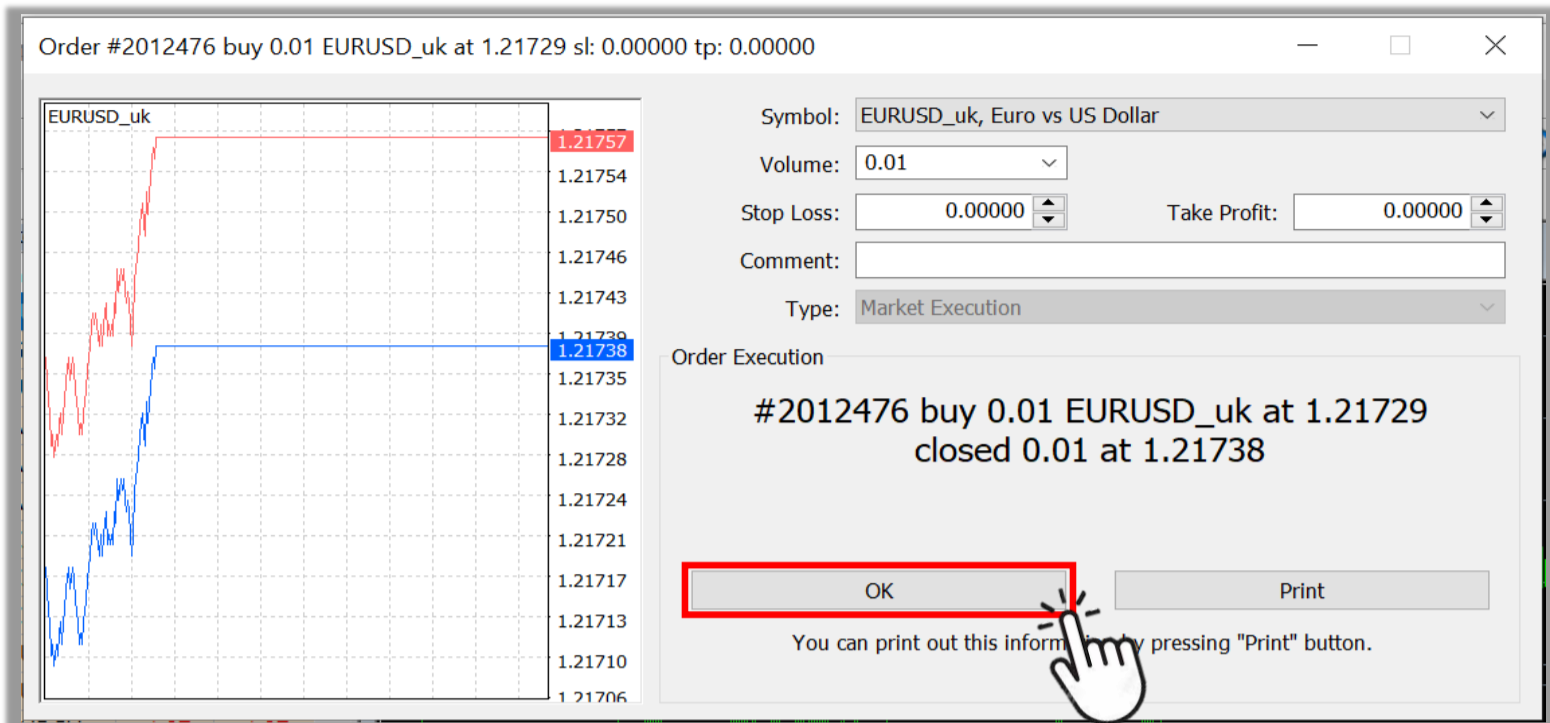
STEP 2 Selecting the cross-sign (X) on the very right of the position that you want to close



STEP 3 Click the yellow **Close** button to close the open position at the current market price



STEP 4 Click **OK** to complete



If the position is successfully closed, it will be shown in the Account History tab of the Terminal window.

Order #	Time	Type	Size	Symbol	Price	S / L	T / P	Time	Price	Swap	Profit
2012457	2021.01.25 04:00:22	buy	0.01	eurusd...	1.21661	0.00000	1.21711	2021.01.25 04:36:49	1.21711	0.00	0.50
2012474	2021.01.25 04:36:55	buy	0.01	eurusd...	1.21736	0.00000	0.00000	2021.01.25 04:37:01	1.21714	0.00	-0.22
2012476	2021.01.25 04:38:35	buy	0.01	eurusd...	1.21729	0.00000	0.00000	2021.01.25 04:45:46	1.21738	0.00	0.09
Profit/Loss: -12.32 Credit: 0.00 Deposit: 100 000.00 Withdrawal: 0.00											99 987.68

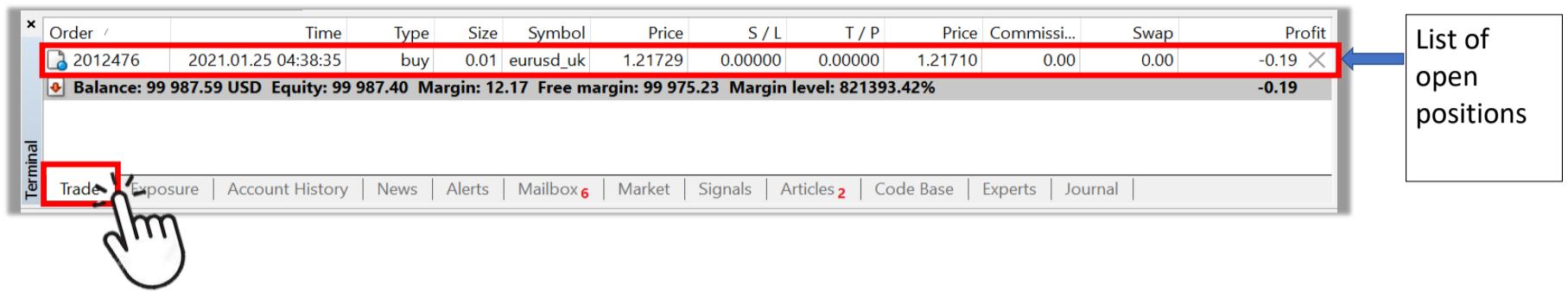
Terminal: Trade | Exposure | **Account History** | News | Alerts | Mailbox 6 | Market | Signals | Articles 2 | Code Base | Experts | Journal

Note: Terminal window is located at the bottom of the platform screen.
(Press Ctrl+T if you don't see Terminal window on your screen)

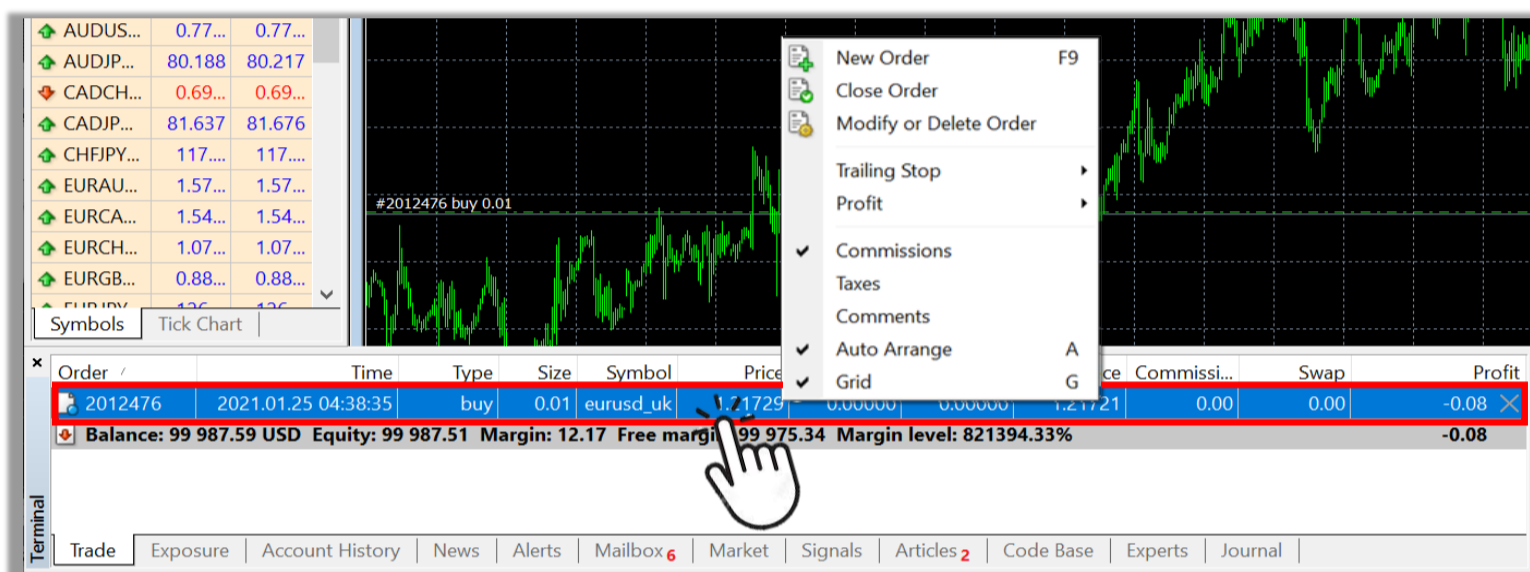
Method 2

In Terminal window located at the bottom of the platform screen
(Press Ctrl+T if you don't see Terminal window on your screen)

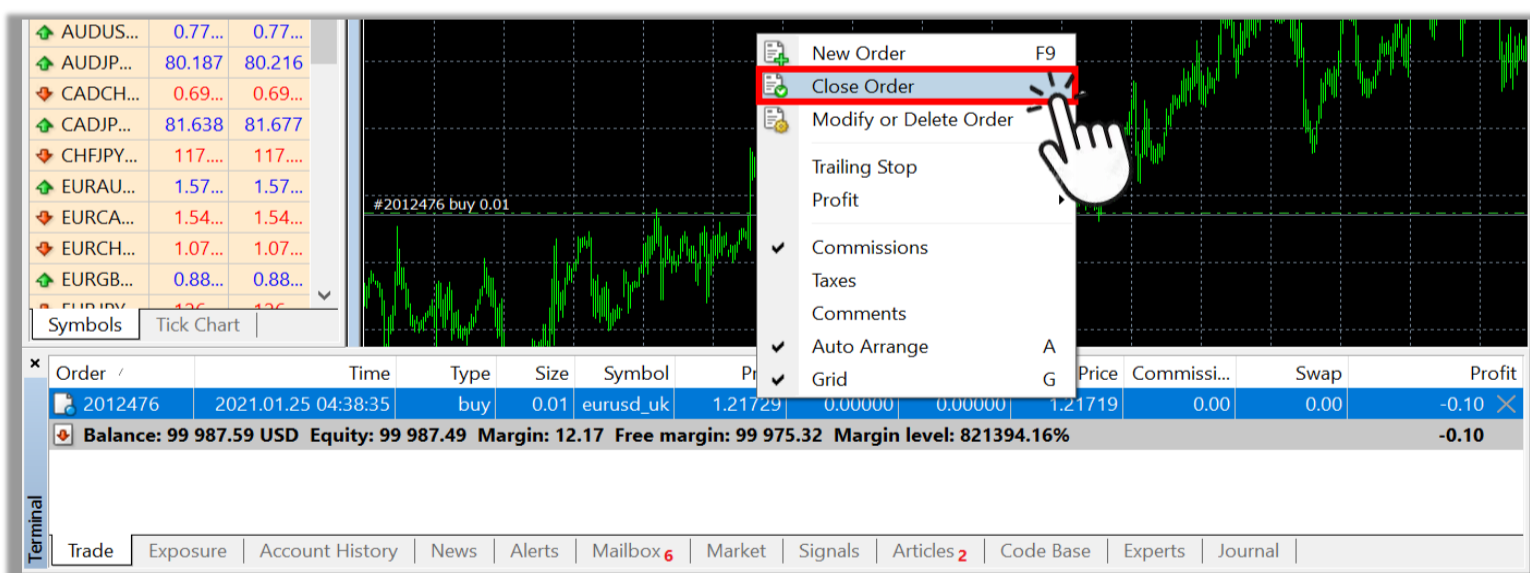
STEP 1 Select Trade tab. Open positions are located above the account balance bar.



STEP 2 Right click on the open position that you want to close



STEP 3 Choose Close Order



STEP 4 Close open position at current market price (same as Step 3-4 of Method 1)

5. How to open a new chart

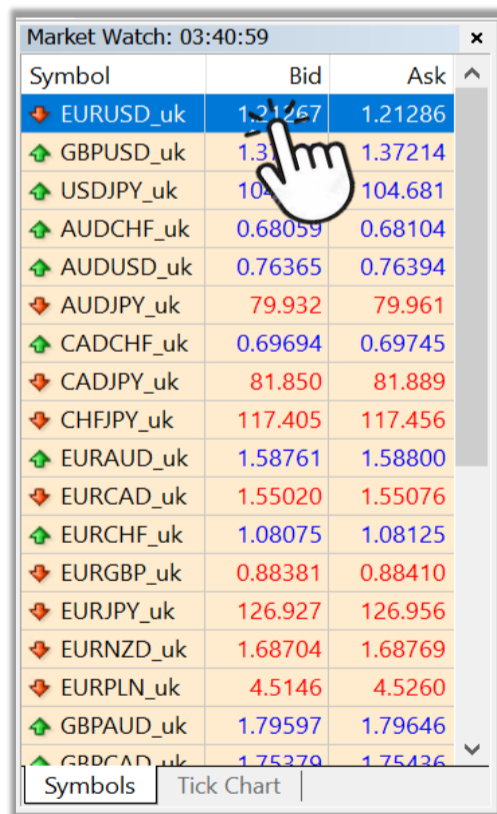
Method 1

From Market Watch window located on the left of the platform screen
(Press Ctrl+M if you don't see Market Watch window on your screen)

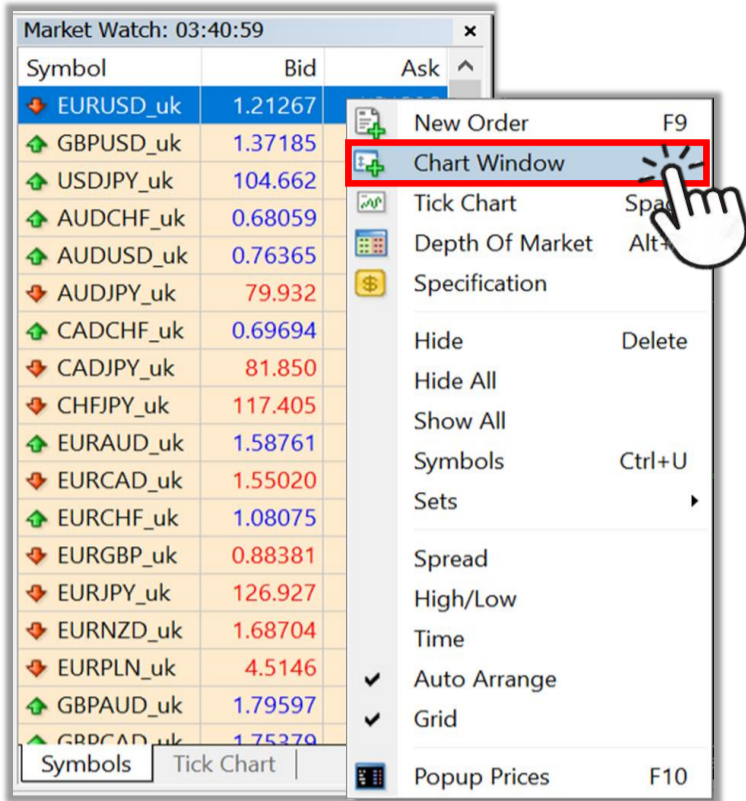
STEP 1 Select Symbols tab



STEP 2 Right click on the row of the currency pair for which you want to open a chart (For example: EURUSD_uk)



STEP 3 Select Chart Window



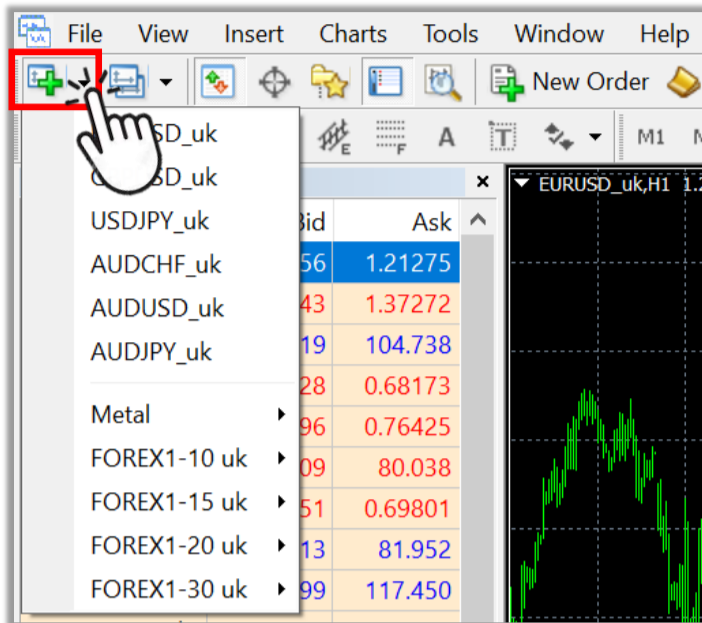
The new chart will appear in the Chart window.



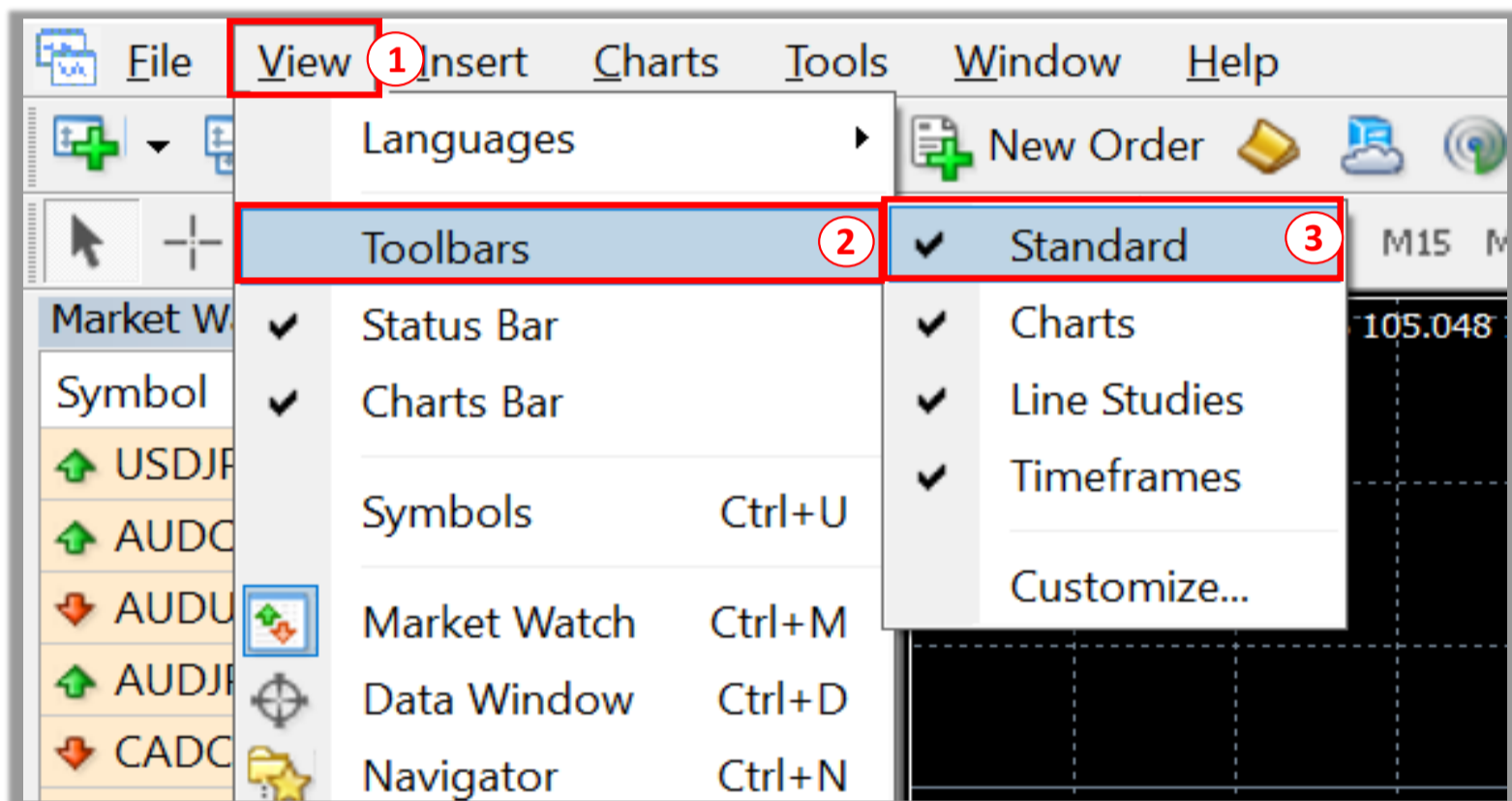
Method 2

On Toolbars located on the top of the platform screen

STEP 1 Click **Create a new chart** icon

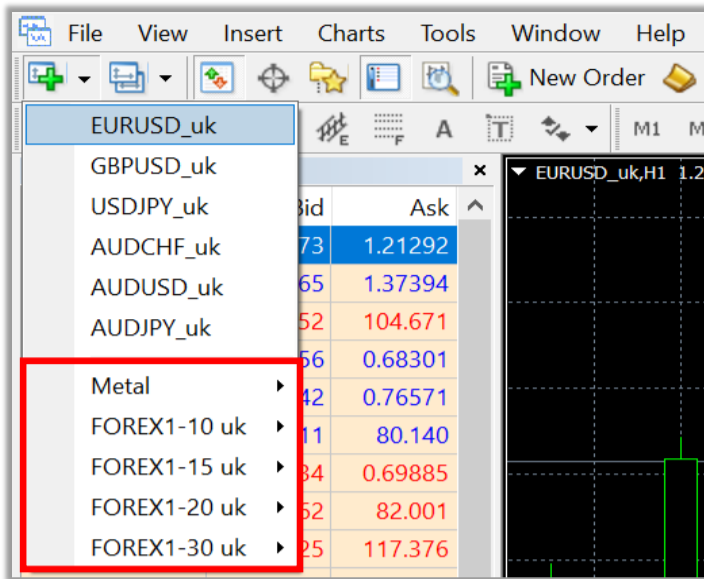


Note: If you don't see Create a new chart icon on your screen, please follow the below instructions.



- 1 Click **View** on Menu bar
- 2 Click **Toolbars**
- 3 Click to put a checkmark (✓) in **Standard**

STEP 2 Select the type of currency pair for which you want to open a chart




STEP 3 Click the currency pair for which you want to open a chart
(For example: **EURUSD_uk**)

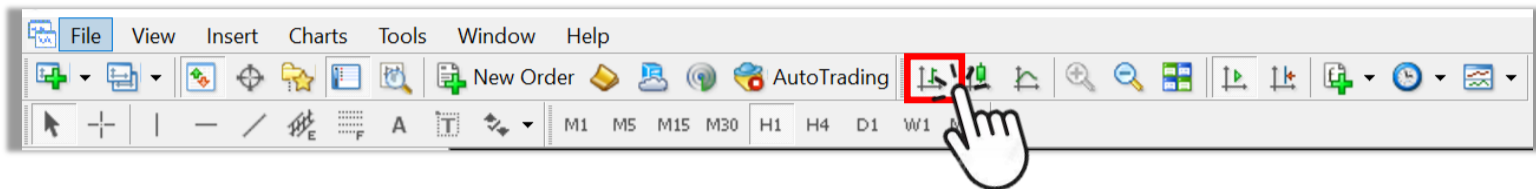


6. How to change chart type

There are 3 types of chart on platform MetaTrader 4: **Bar Chart**, **Candlesticks** and **Line Chart**.

Change to Bar Chart


Click  icon on Toolbars located on the top of the platform screen or press **Alt+1**

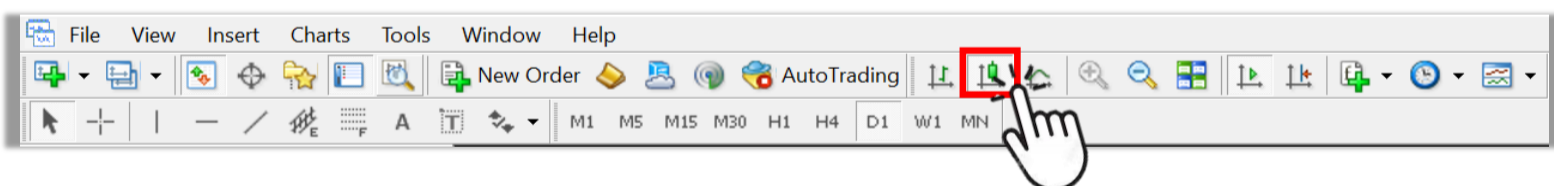


When Bar Chart is opened successfully, the chart shown on Chart window will change as below.



Change to Candlestick Chart


Click  icon on Tools bar located on the top of the platform screen or press **Alt+2**

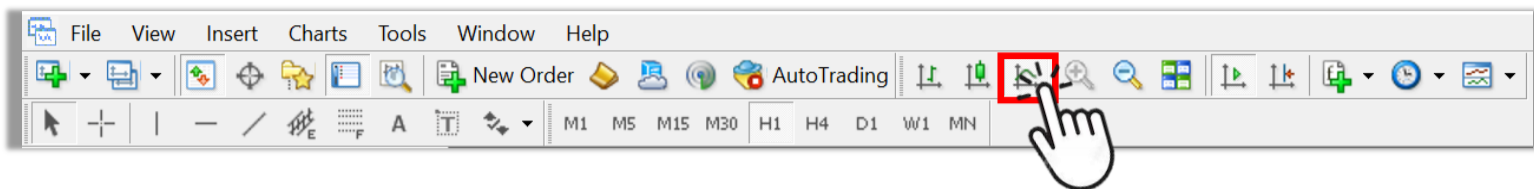


When Candlestick Chart is opened successfully, the chart shown on Chart window will change as below.

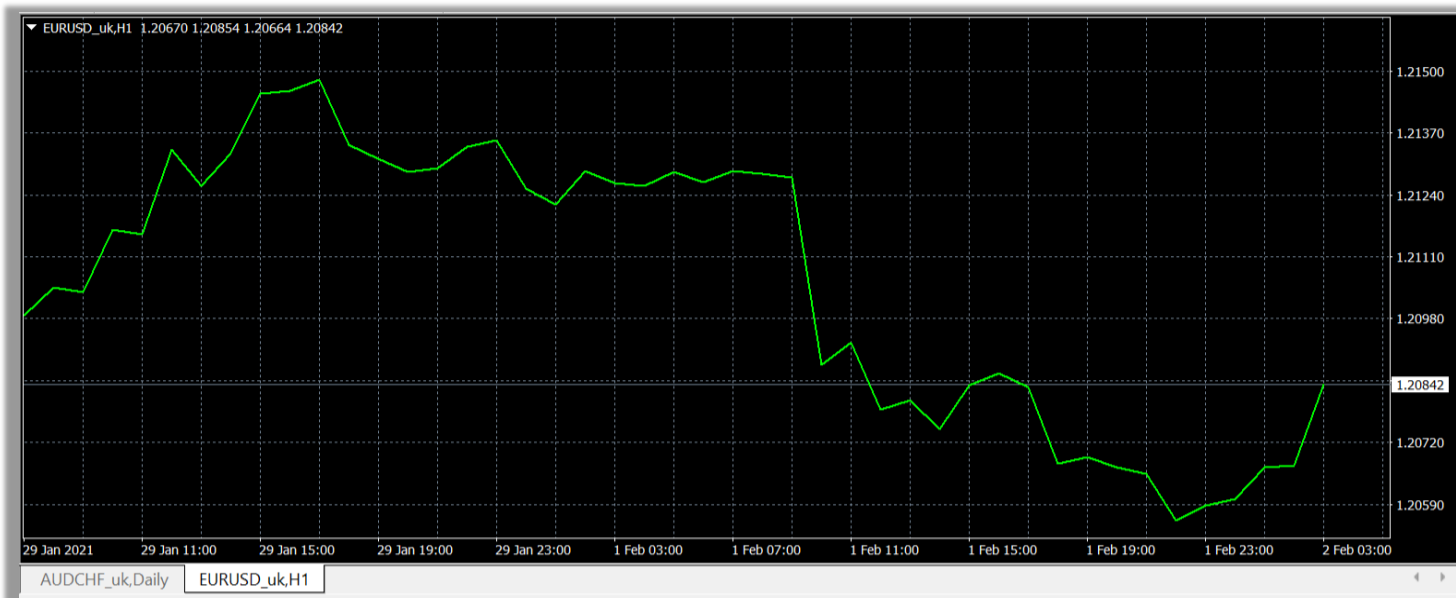


Change to Line Chart

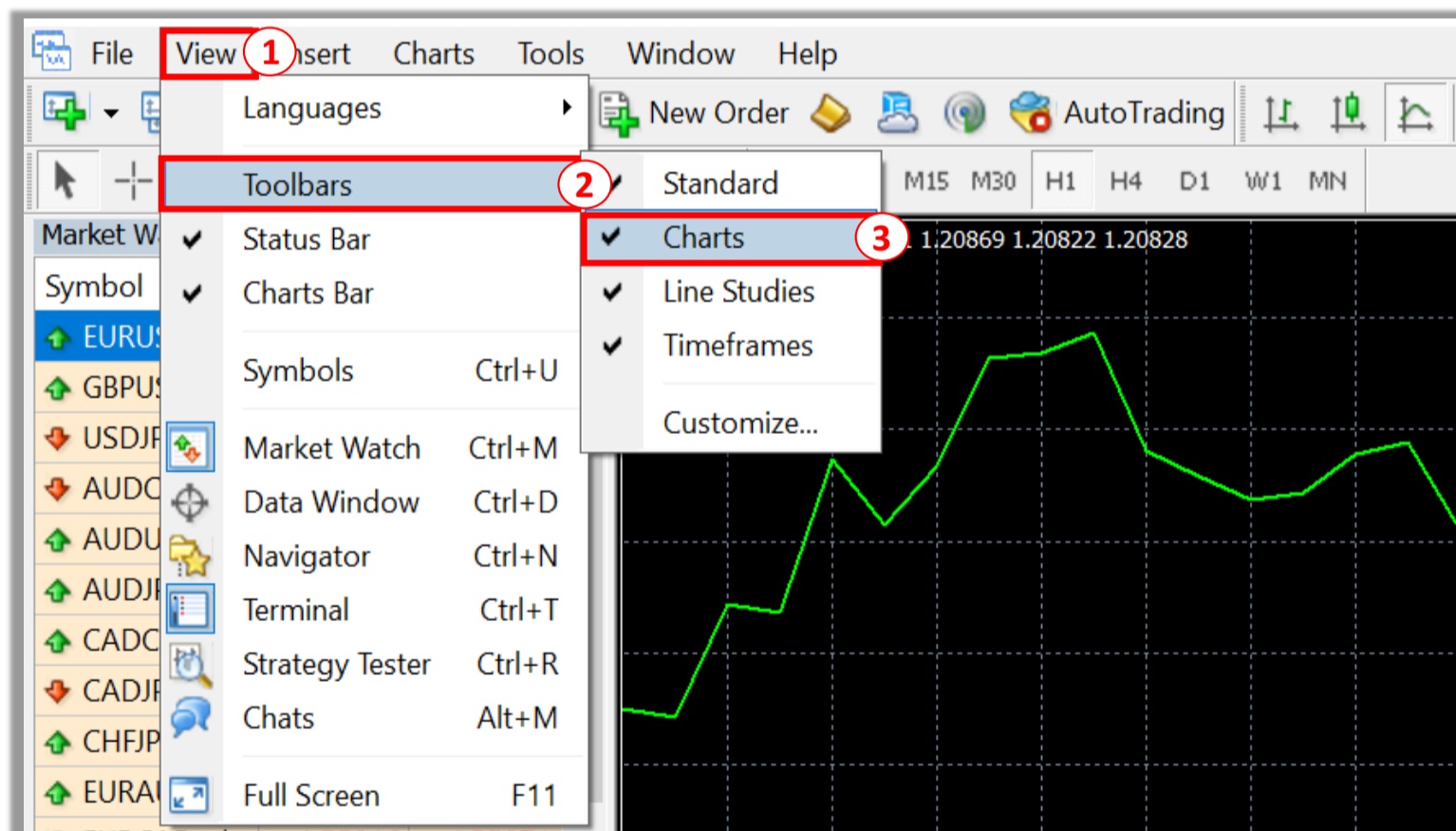
Click  icon on Tools bar located on the top of the platform screen or press **Alt+3**



When Line Chart is opened successfully, the chart shown on Chart window will change as below.



Note: If you don't see icons for each chart type on your screen, please follow the below instructions.





- 1 Click **View** on Menu bar
- 2 Click **Toolbars**
- 3 Click to put a checkmark (✓) in **Charts**

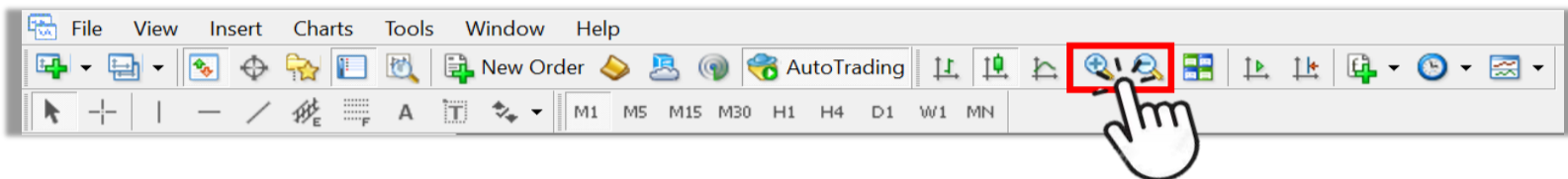
7. How to zoom in or zoom out a chart



Method 1

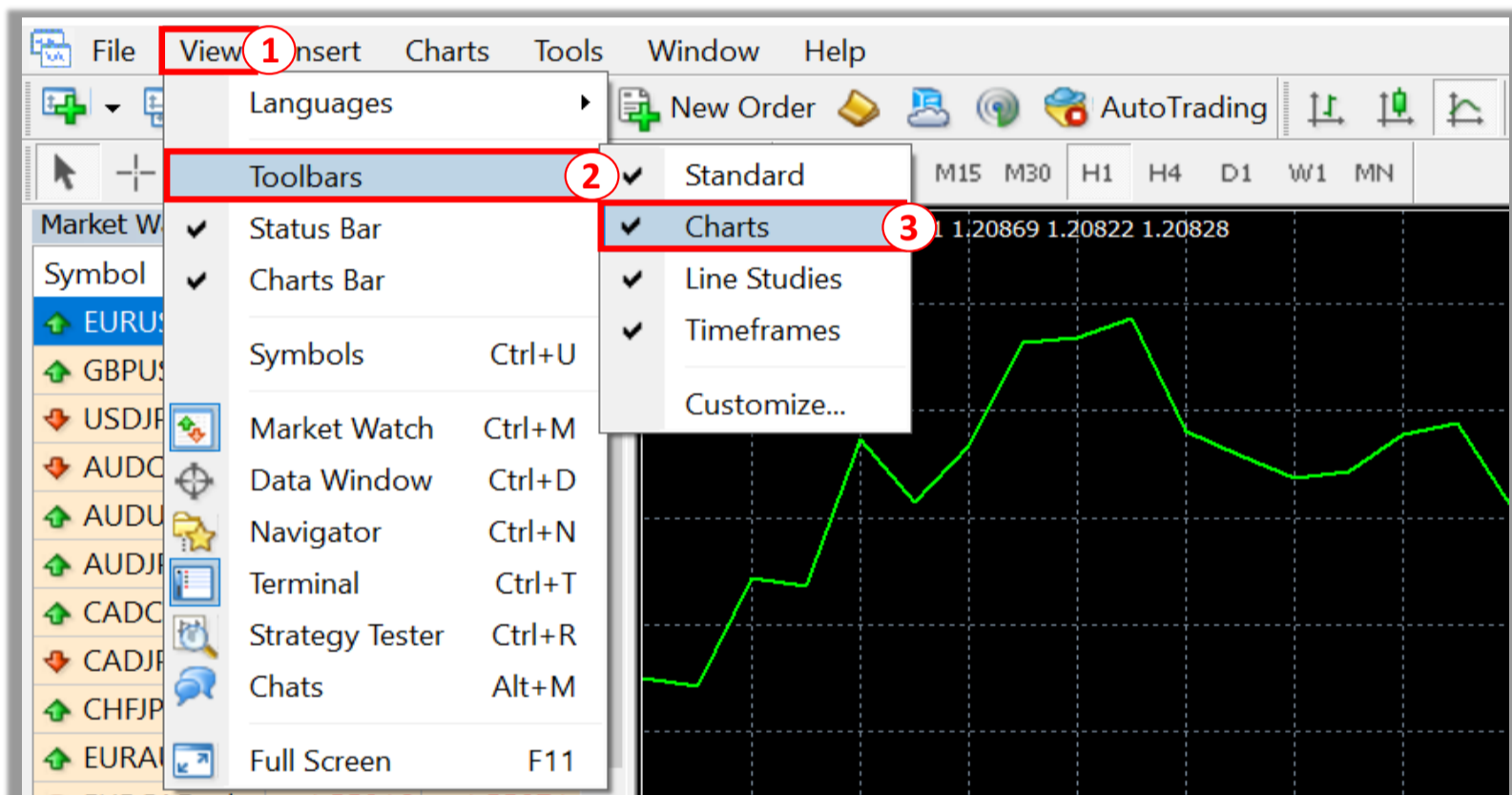
On Toolbars located on the top of the platform screen

Click  icon if you want to make chart bigger

Click  icon if you want to make chart smaller



Note: If you don't see the   on your screen, please follow the below instructions.



- ① Click **View** on Menu bar
- ② Click **Toolbars**
- ③ Click to put a checkmark (✓) in **Charts**

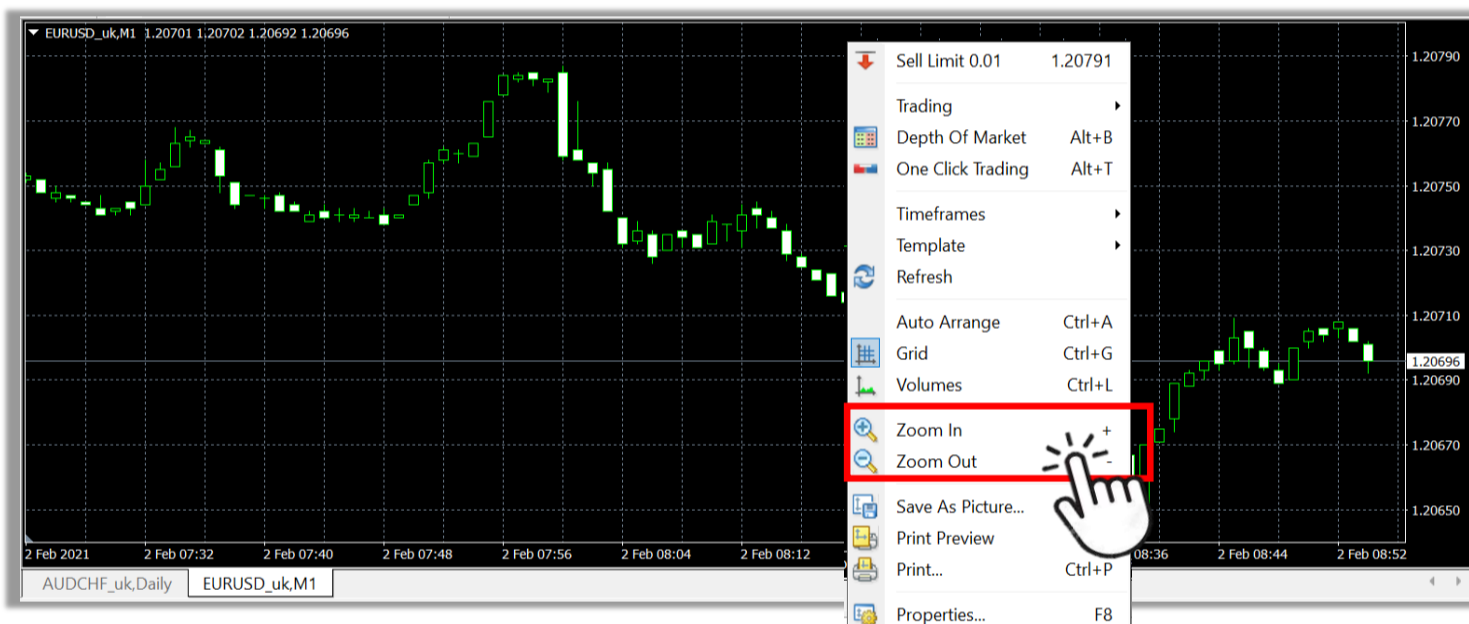
Method 2

On Chart window

STEP 1 Right click anywhere on the chart



STEP 2 Click **Zoom In** if you want to make the chart bigger
Click **Zoom Out** if you want to make the chart smaller



8. How to change timeframe of the chart

A **chart timeframe** refers to the period in which a new line, bar, or candlestick forms on the chart.

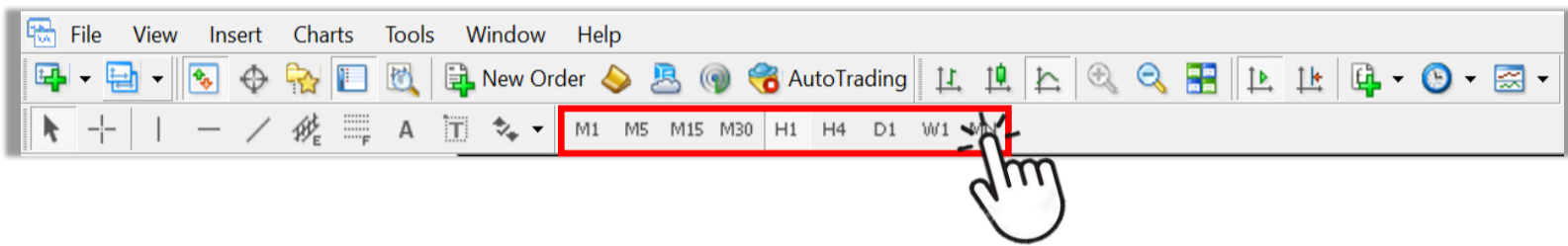
In MetaTrader 4 the following chart timeframes can be used: 1 minute, 5 minutes, 15 minutes, 30 minutes, 1 hour, 4 hours, daily, weekly, and monthly.

Method 1

On Toolbars located on the top of the platform screen

Choose the timeframe that you want to change:

M1 (1 minute), **M5** (5 minutes), **M15** (15 minutes), **M30** (30 minutes), **H1** (1 hour), **H4** (4 hours), **D1**(daily), **W1** (weekly) and **MN** (monthly)

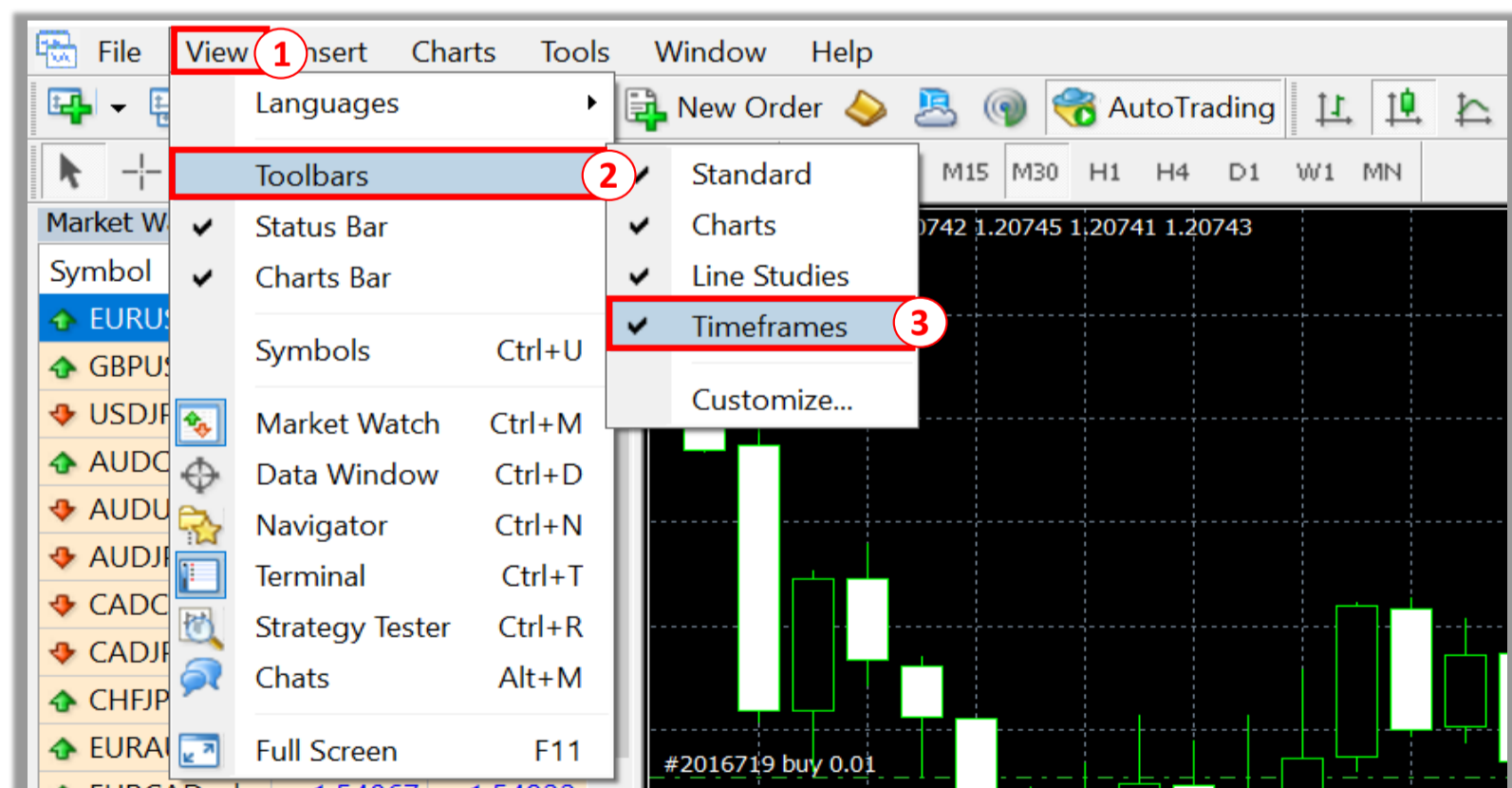


For example: if you want to change to 1 hour chart timeframe, click **H1** icon

When 1 hour chart timeframe is changed successfully, "H1" will be added to the chart name shown on the upper left of the Chart window.



Note: If you don't see the Timeframes toolbars on your screen, please follow the below instructions.



- 1 Click **View** on Menu bar
- 2 Click **Toolbars**
- 3 Click to put a checkmark (✓) in **Timeframes**

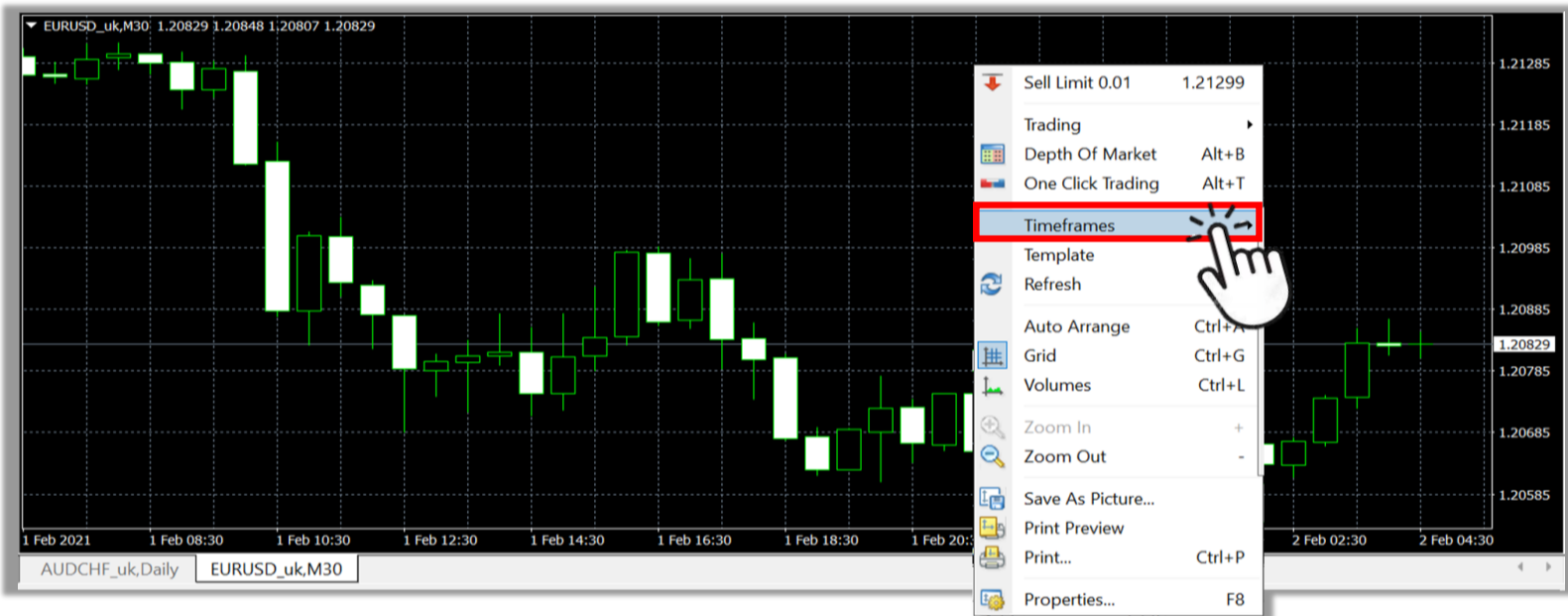
Method 2

On Chart window

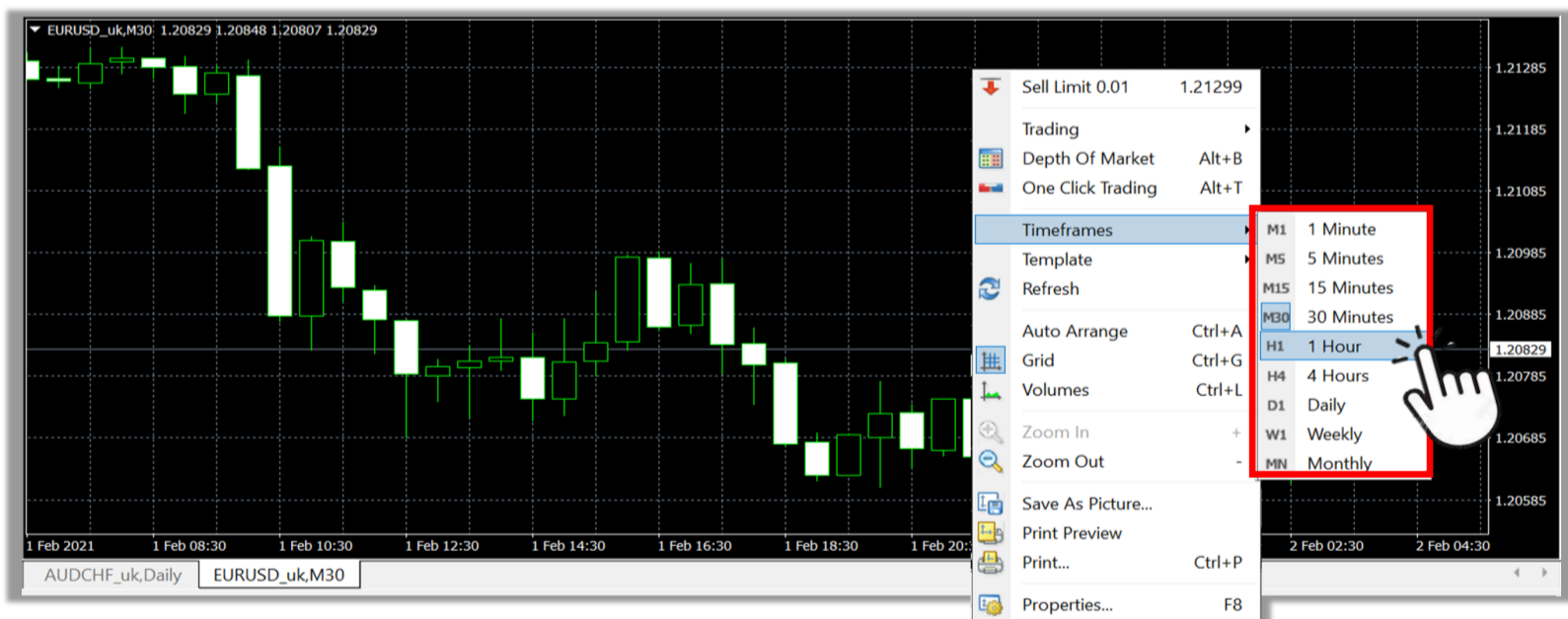
STEP 1 Right click anywhere on the chart window



STEP 2 Click Timeframes



STEP 3 Click the timeframe you want to choose



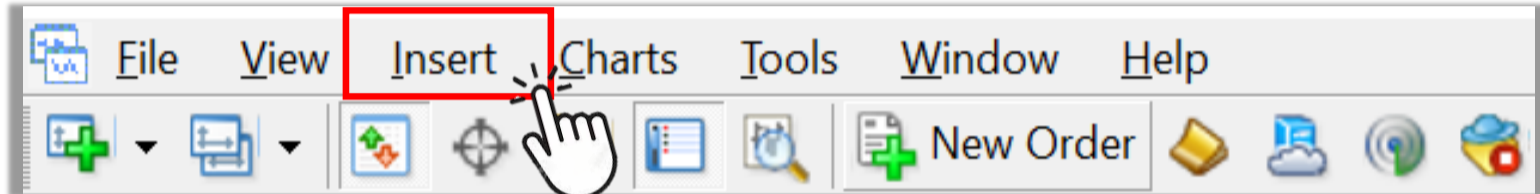
9. How to insert technical indicator to chart

Technical indicators are tools that help you determine the good timing to buy/sell to maximize your profit.

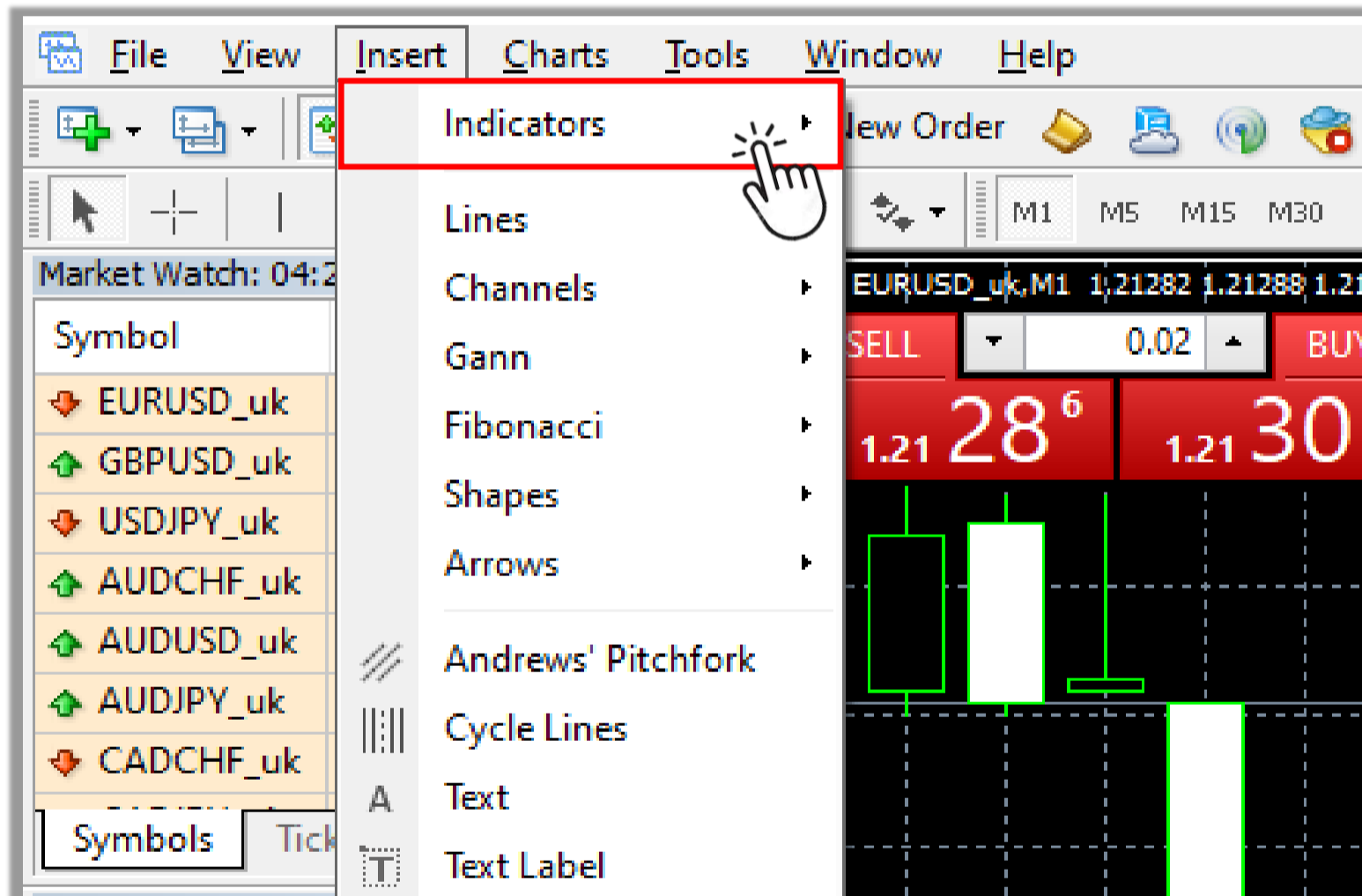
Method 1

On Menu bar located on the top of the platform screen

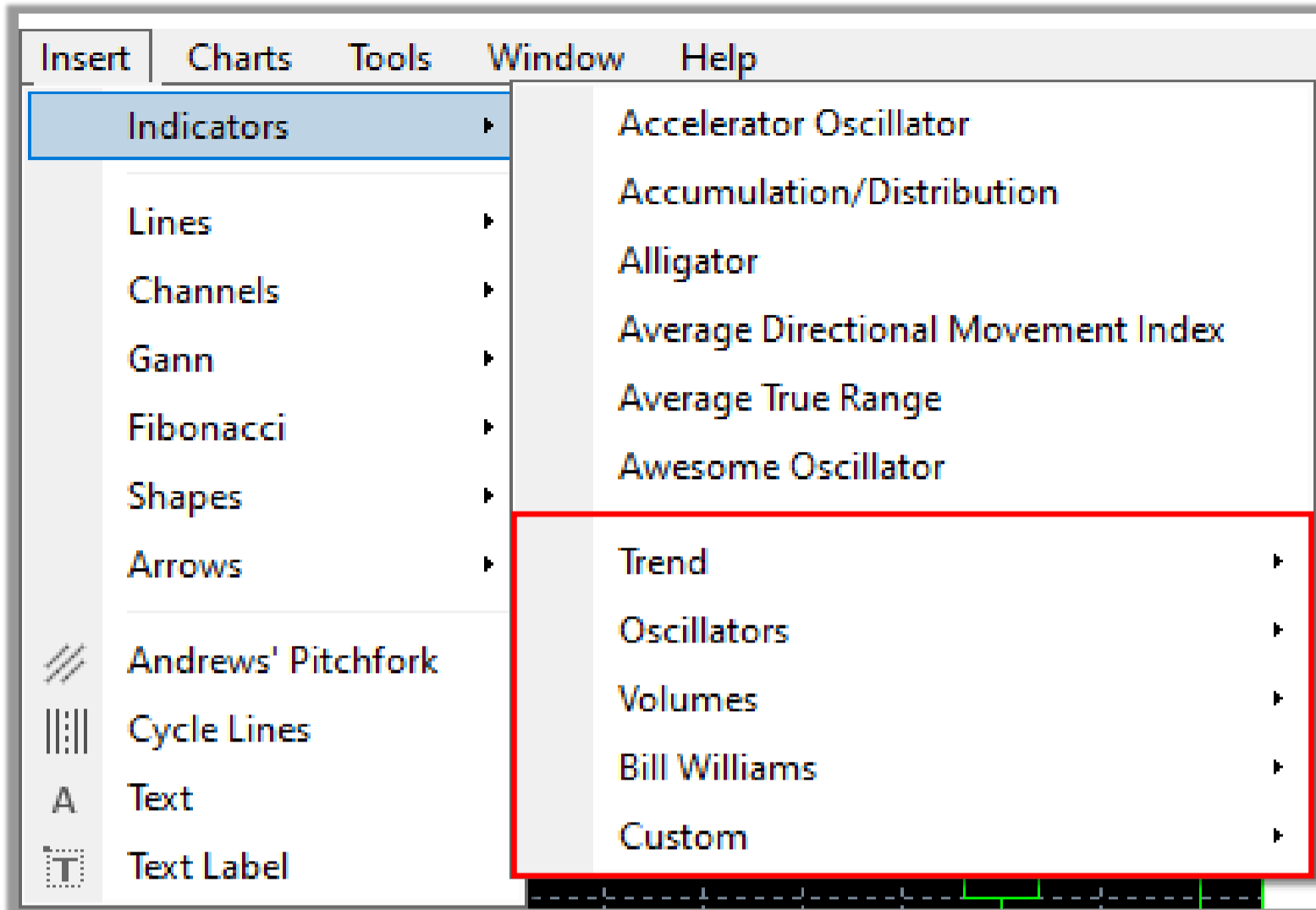
STEP 1 Click Insert



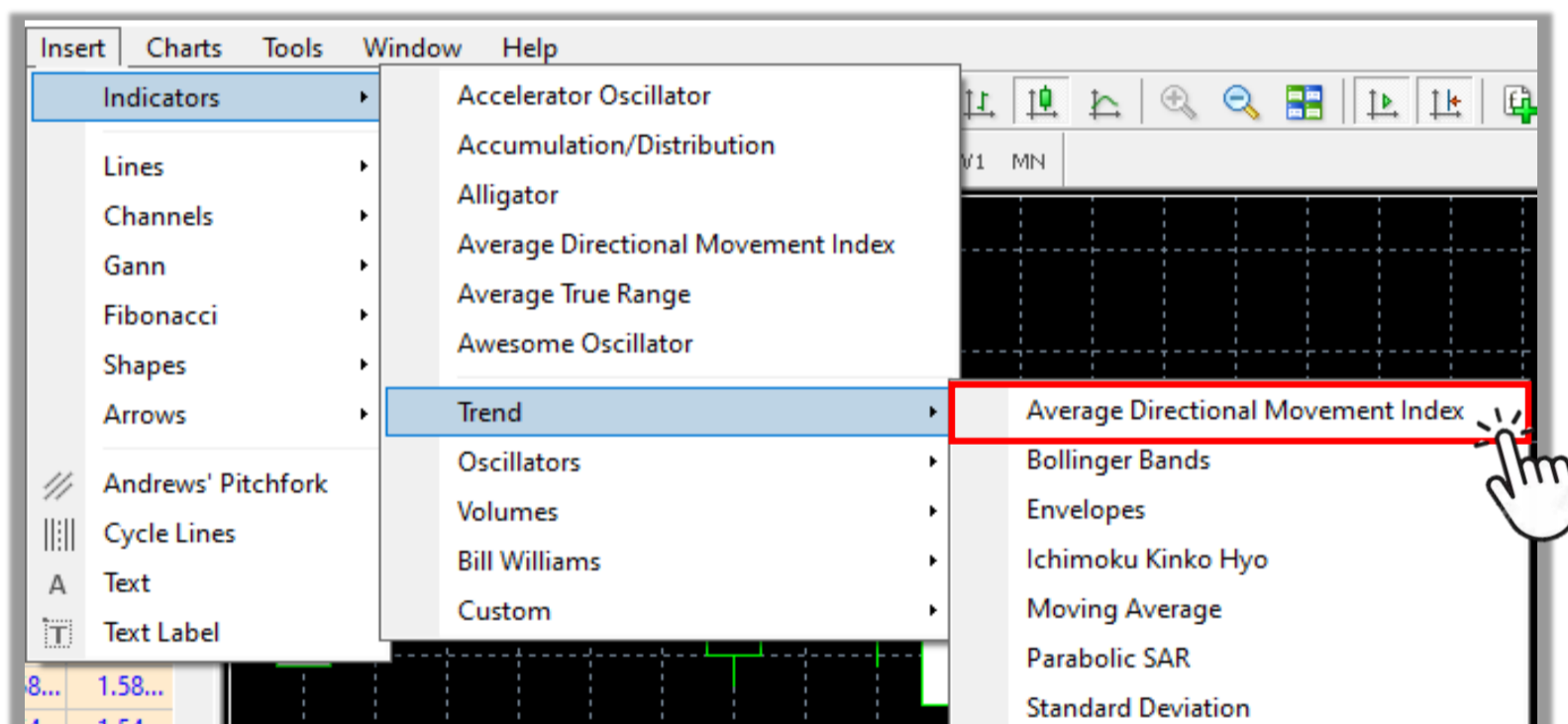
STEP 2 Choose Indicators



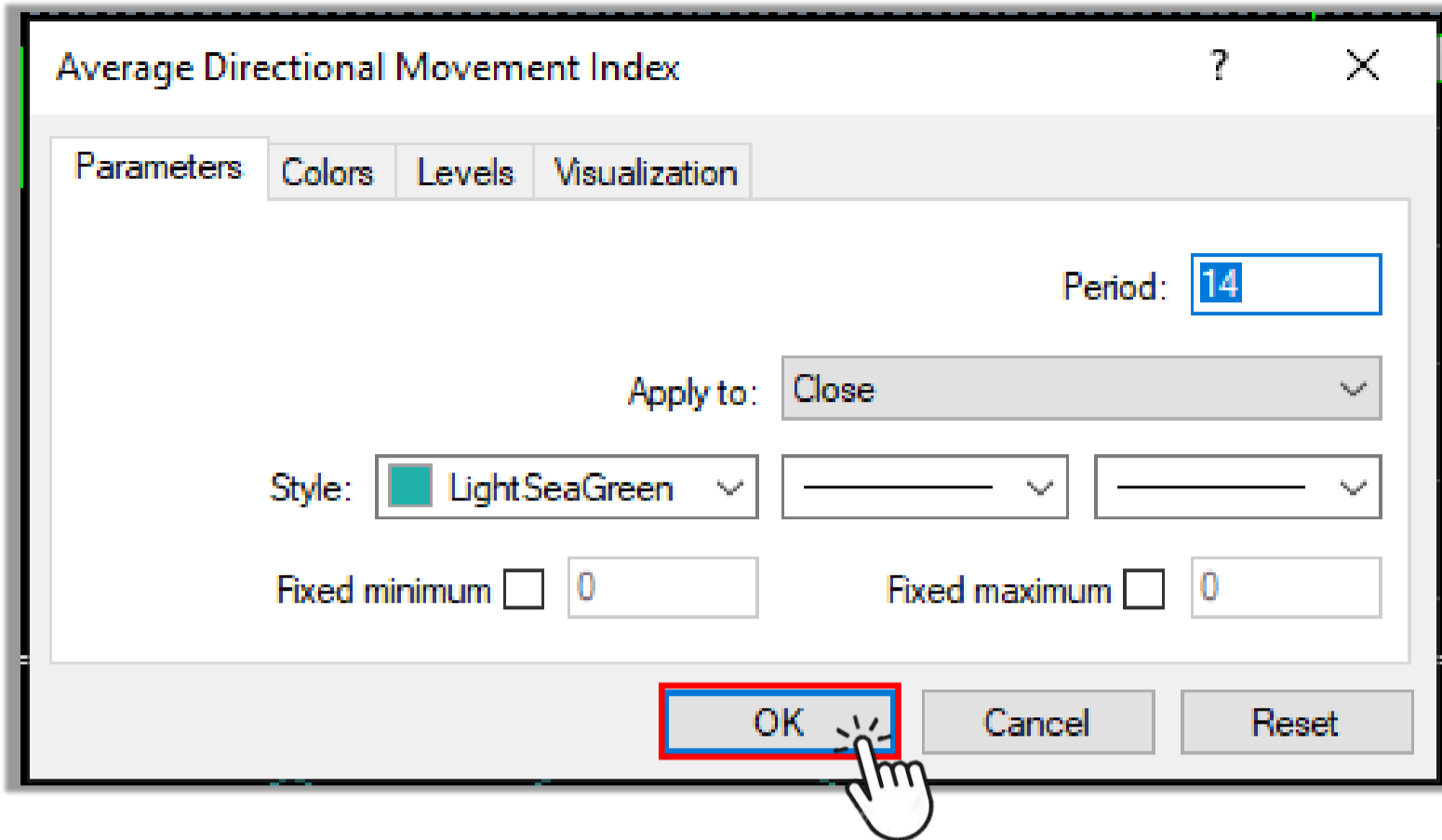
STEP 3 Select the indicator type you want to use



STEP 4 Click the indicator you want to use (For example: Average Directional Movement Index)



STEP 5 Change the settings of the indicator and click **OK** to complete



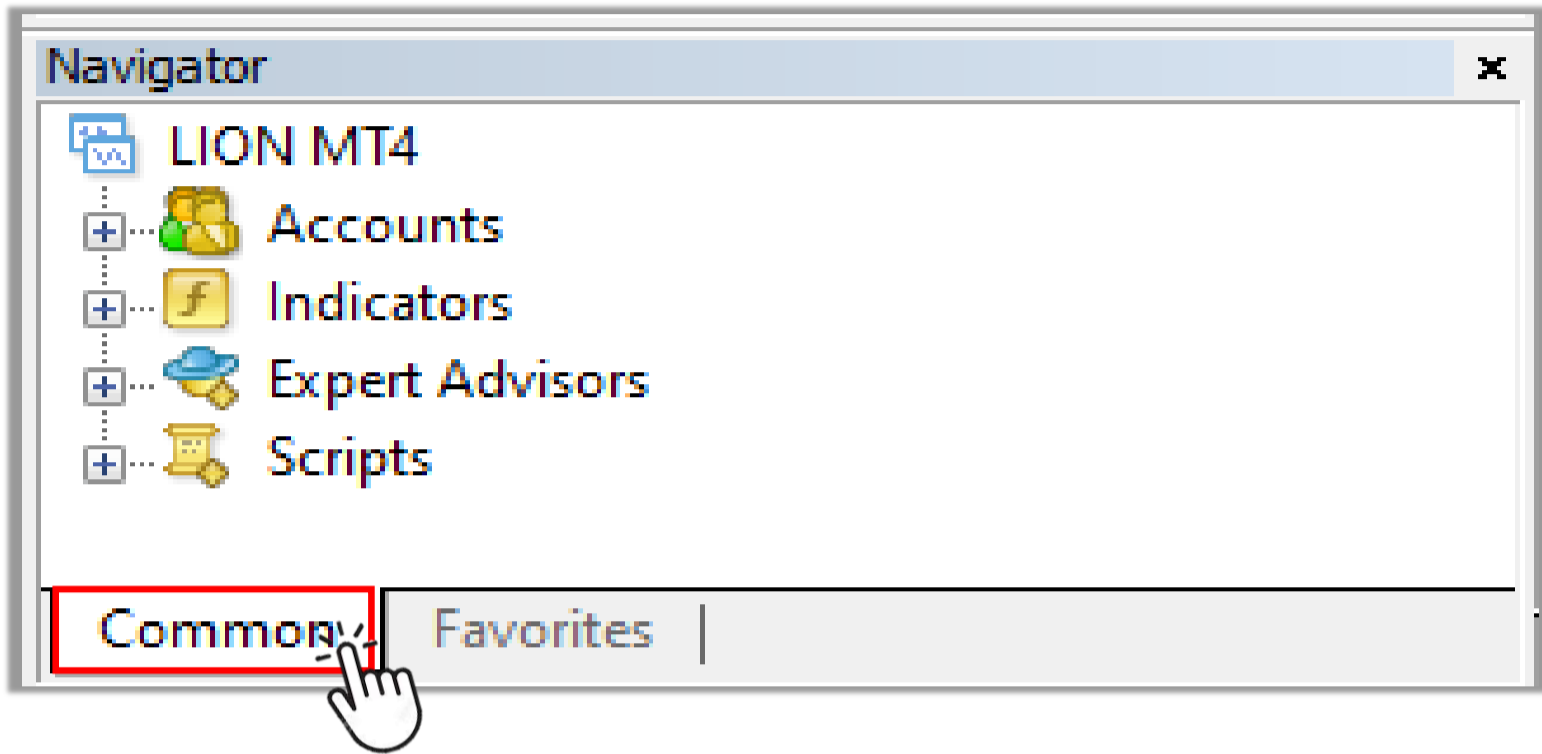
The indicator you have chosen will appear on the chart.



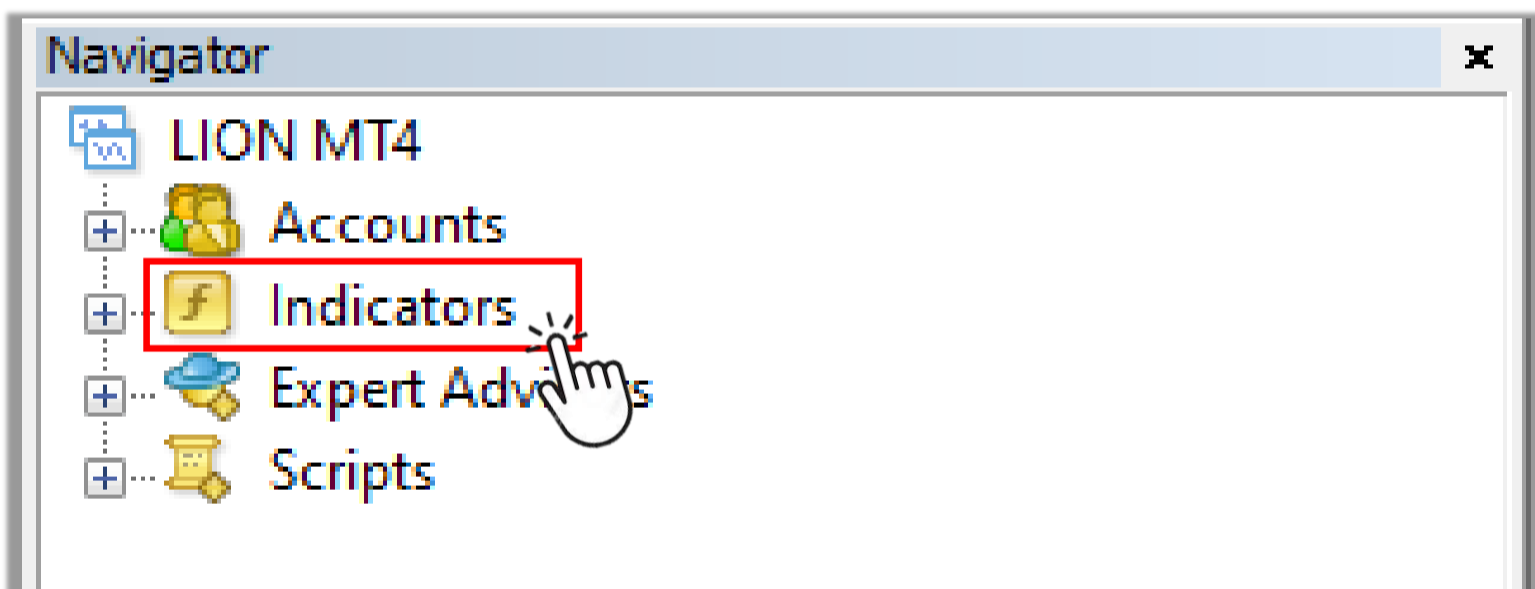
Method 2

In the Navigator window on the left side of the platform screen
(Press Ctrl+N if you don't see Navigator window on your screen)

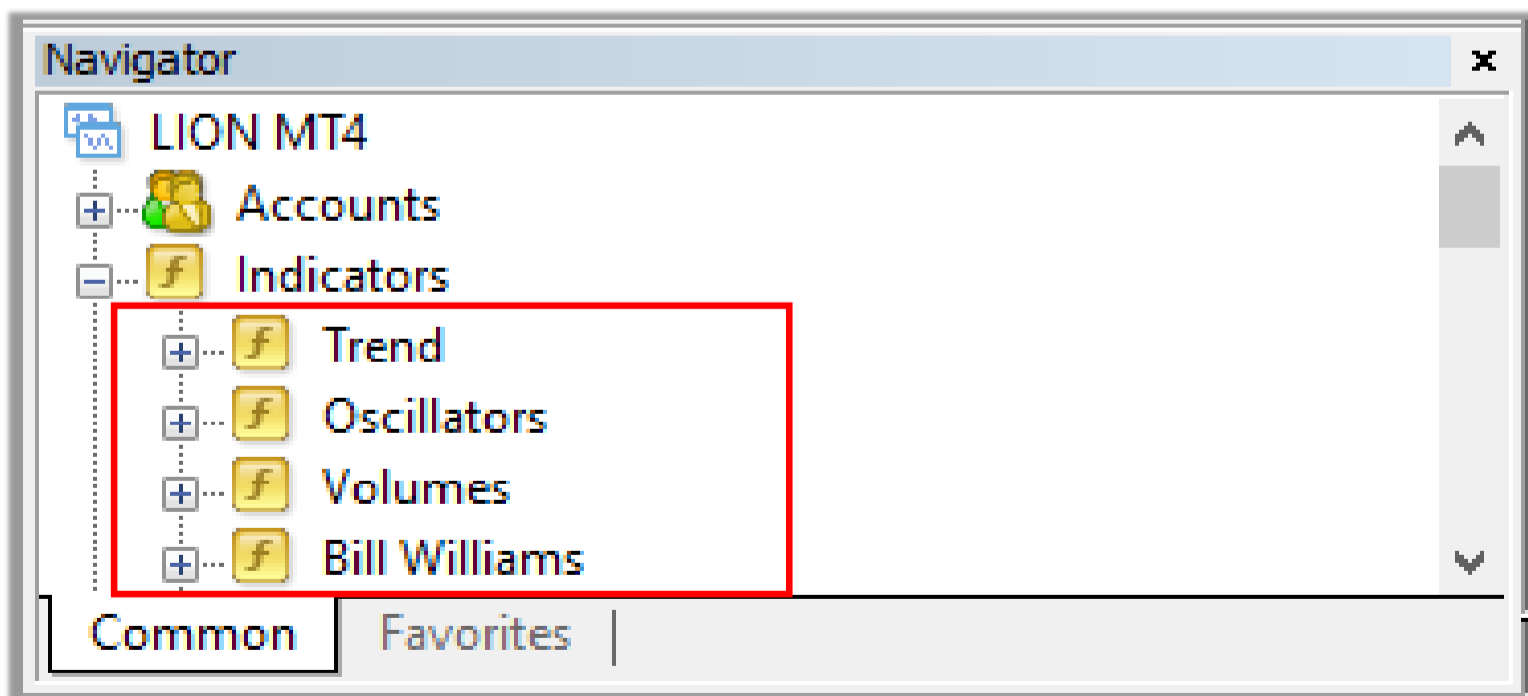
STEP 1 Choose **Common** tab



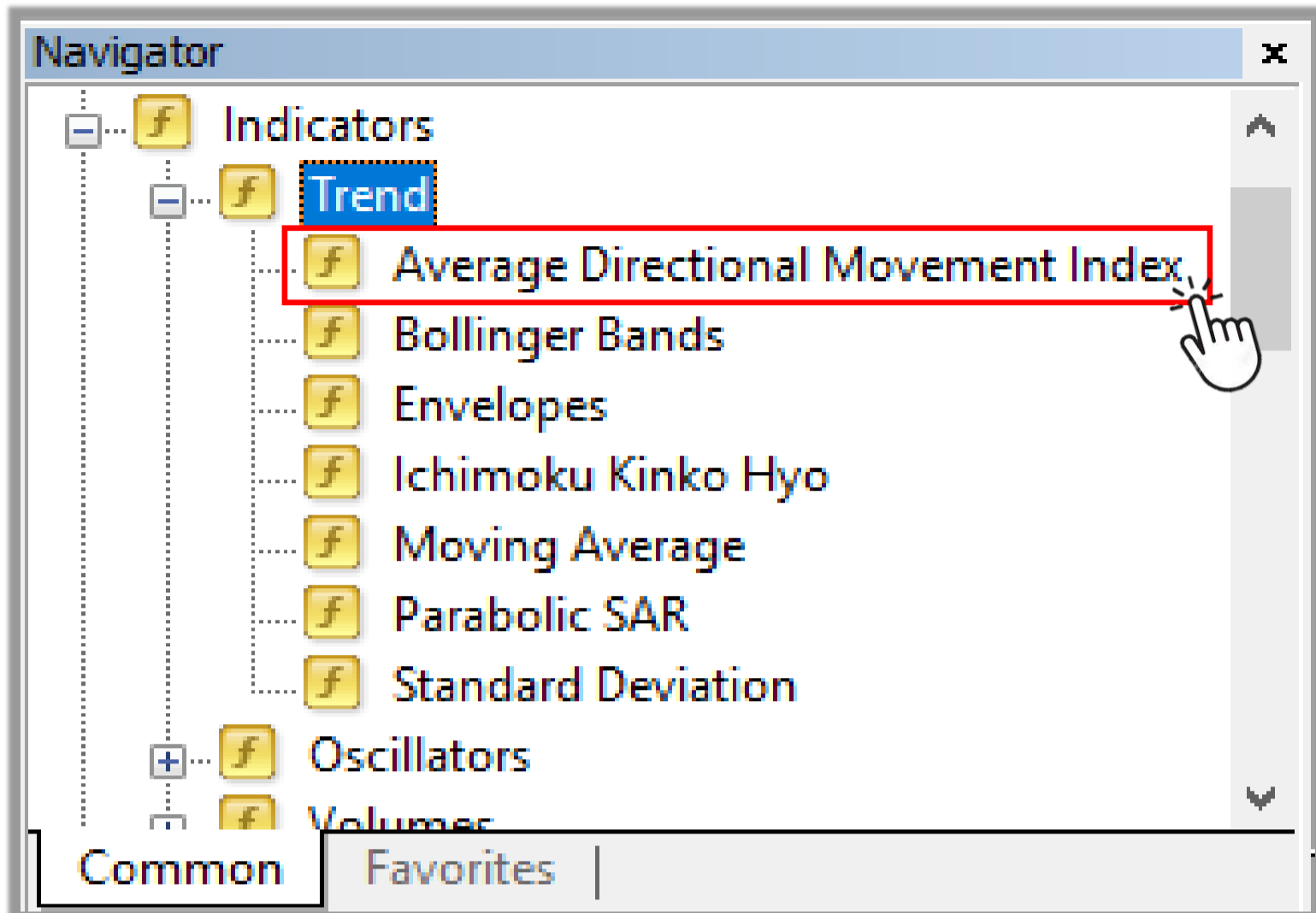
STEP 2 Double click **Indicators** tab in the Navigator window



STEP 3 Double click the indicator type you want to use



STEP 4 Double click the indicator you want to use (For example: Average Directional Movement Index)

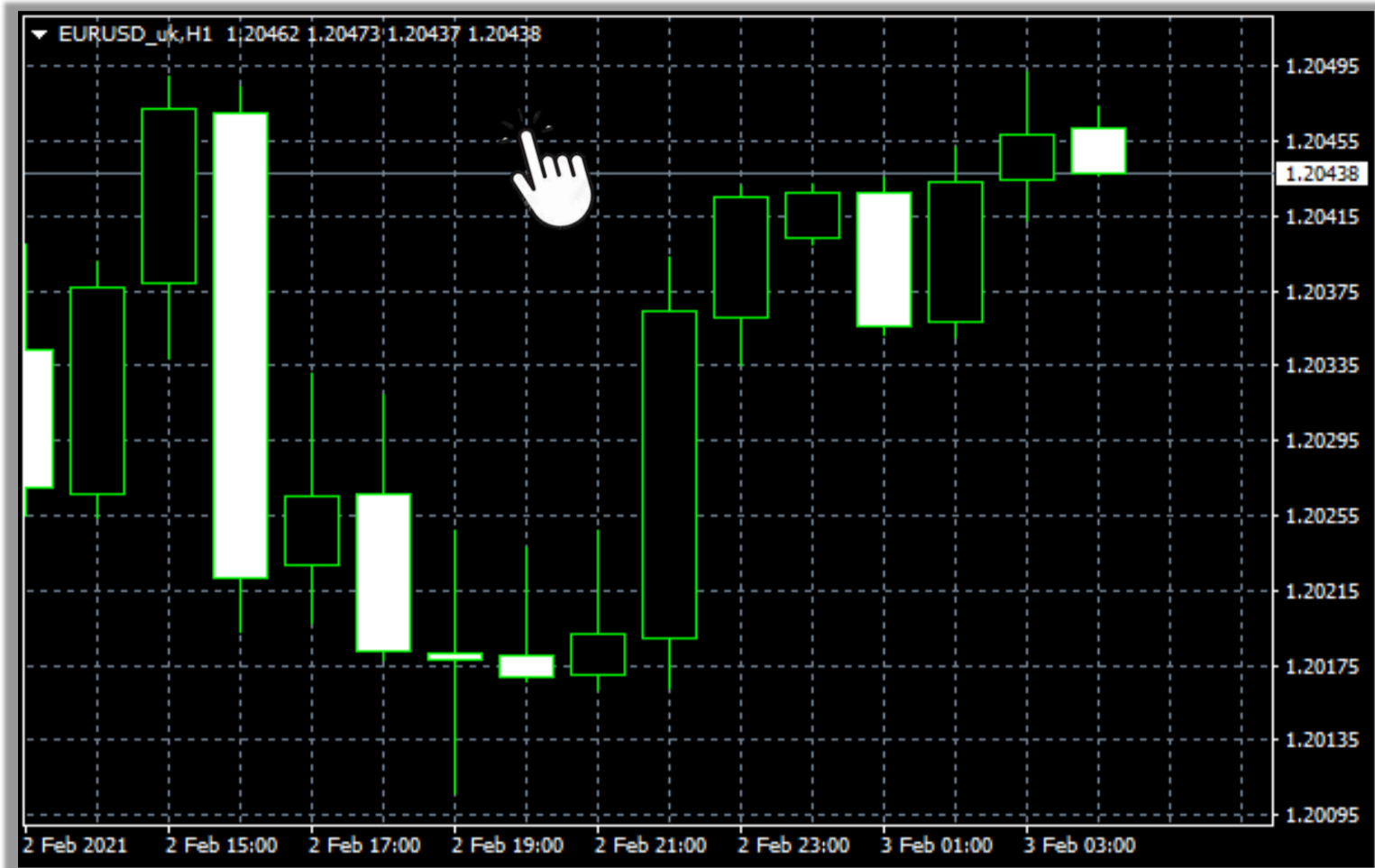


STEP 5 Change the settings of the indicator and click **OK** to complete (as same as Step 5 of Method 1)

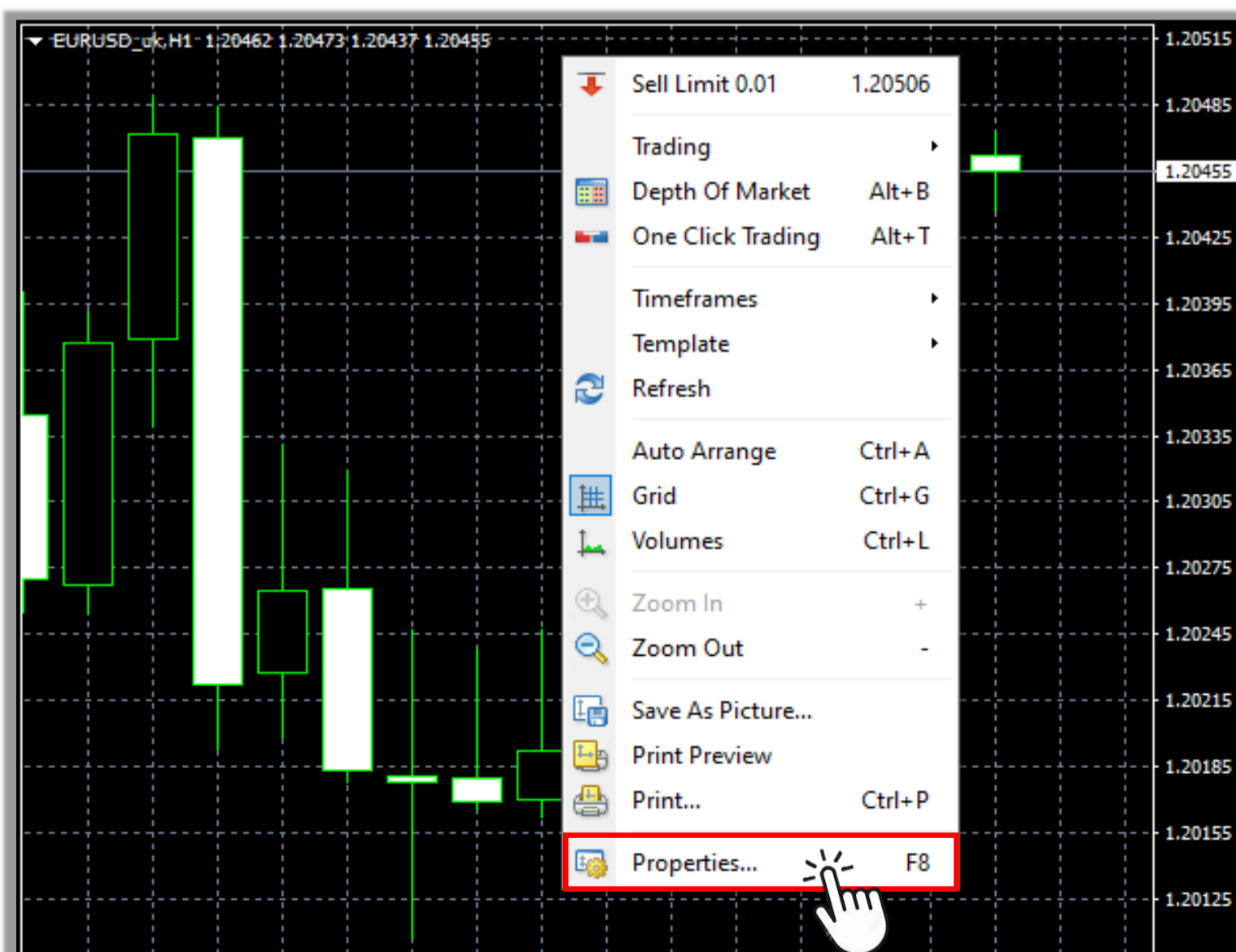
10. How to modify chart appearance

You can change the chart appearance (background color, candlestick color, line color, etc) to suit your preferences.

STEP 1 Right click anywhere on the chart

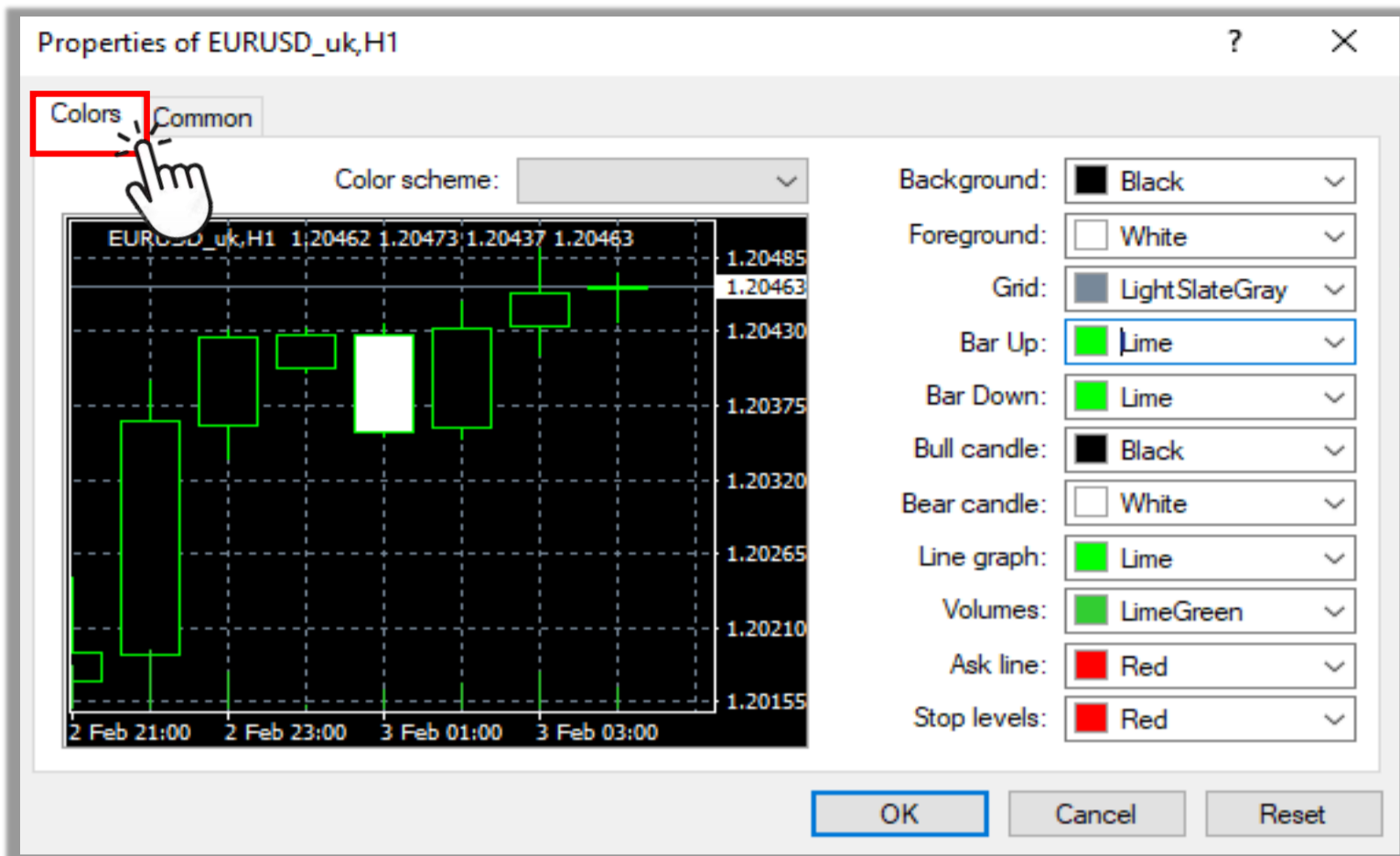


STEP 2 Click Properties or press F8



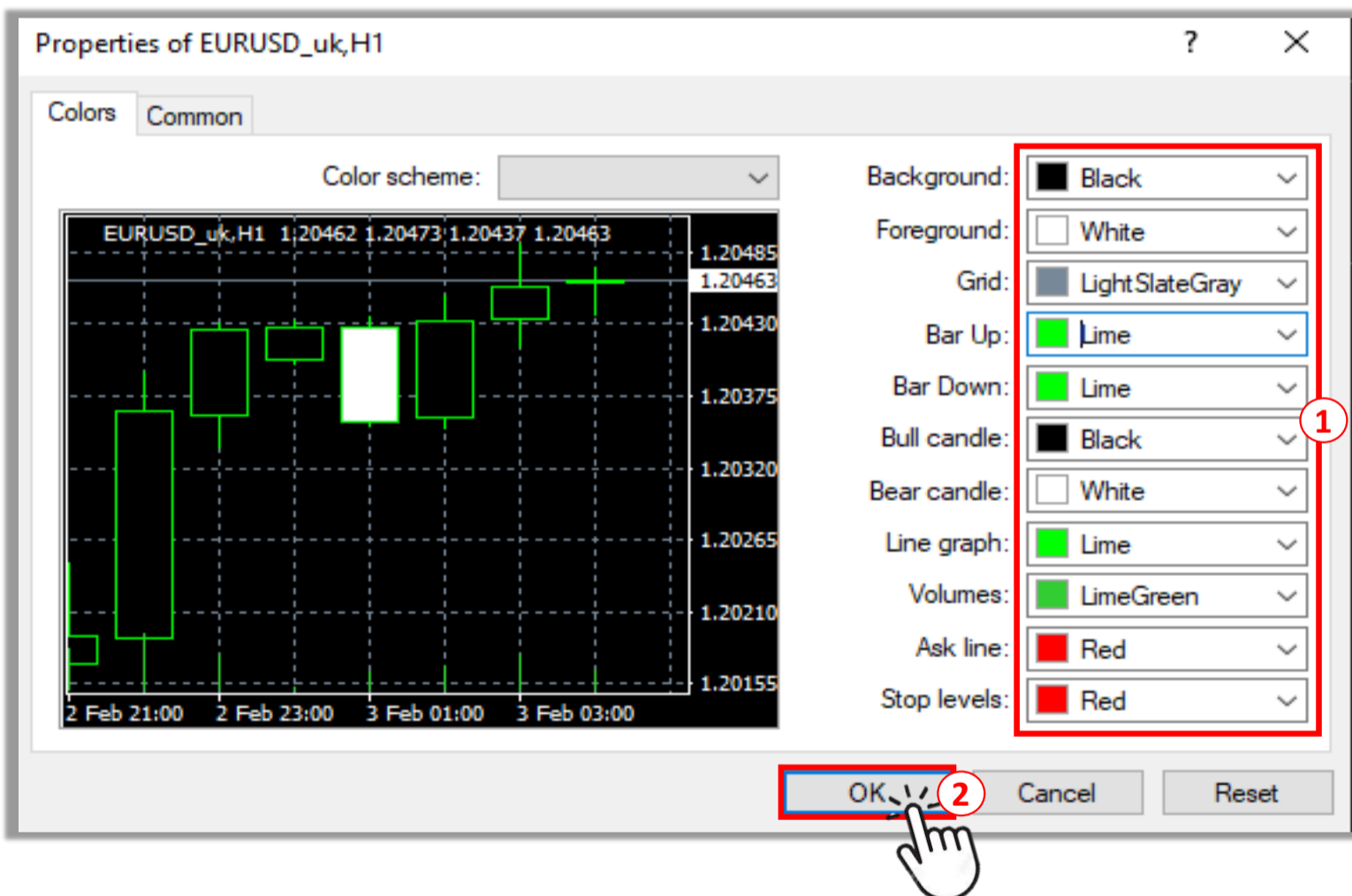
STEP 3

Choose **Colors** tab



STEP 4

Change the color of your preference and click **OK** to complete



- 1 Click on each bar to choose the color of your preference. You can see a preview of the chart appearance on the left side of the window.
- 2 Click **OK** to complete

11. How to save my chart settings and apply it to another chart

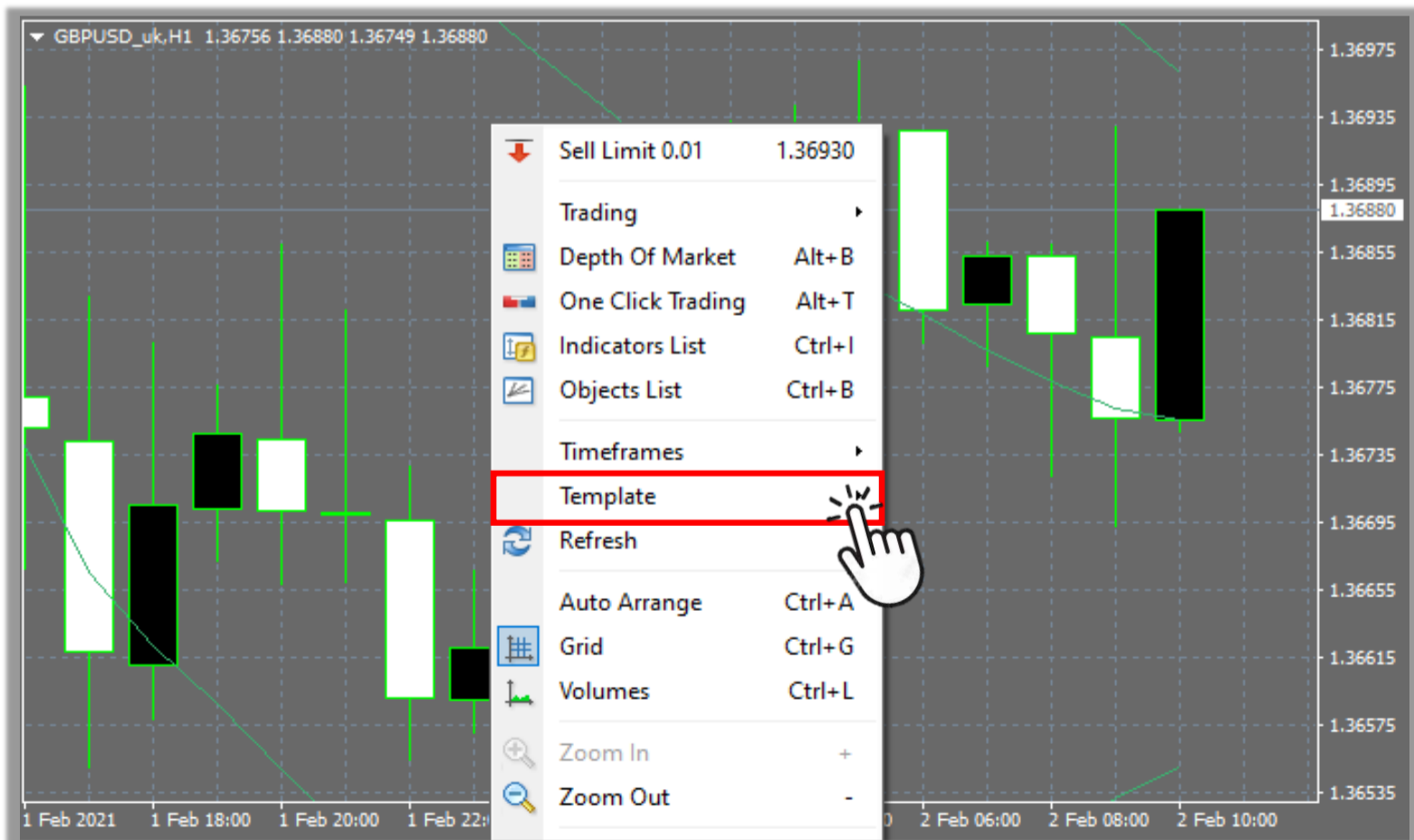
You can save the settings (layout, indicators, etc) of a specific chart as a template and apply it to other chart.

Method 1	On Chart window
-----------------	-----------------

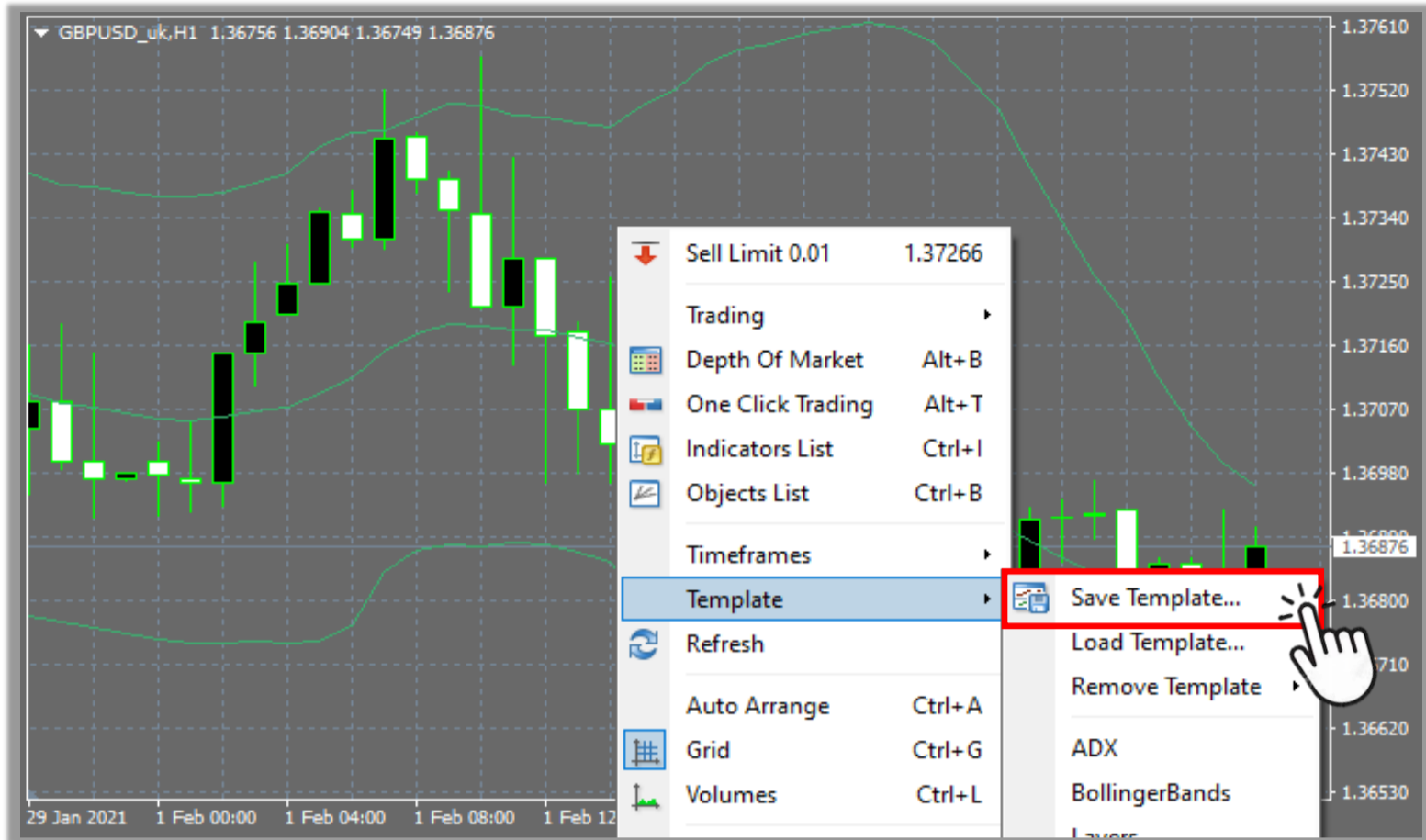
STEP 1 Open the chart you want to save the new settings and right click anywhere on it



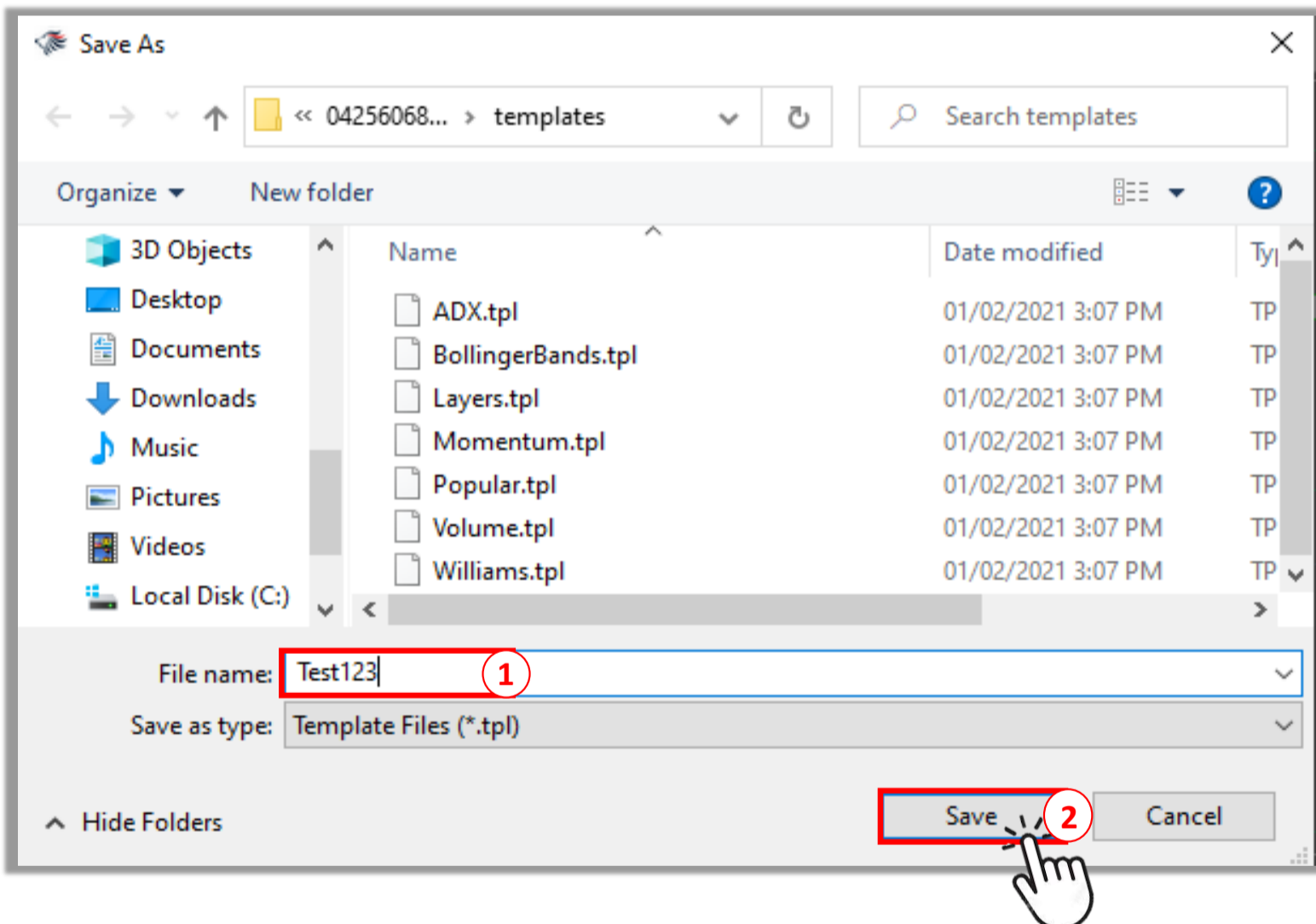
STEP 2 Click **Template**



STEP 3 Click **Save Template**



STEP 4 Save the template



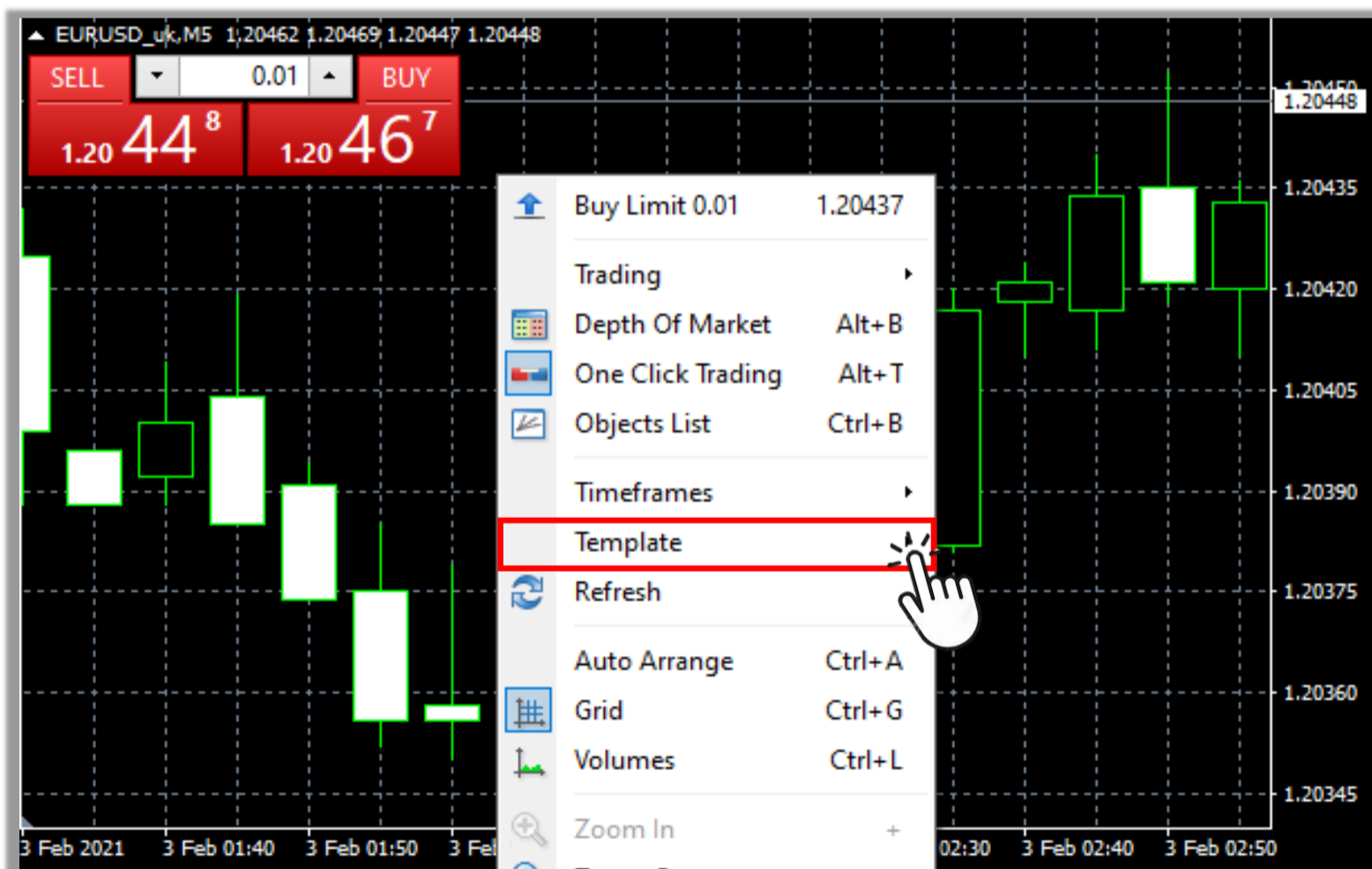
1 Enter the name you want to save the template as

2 Click **Save**

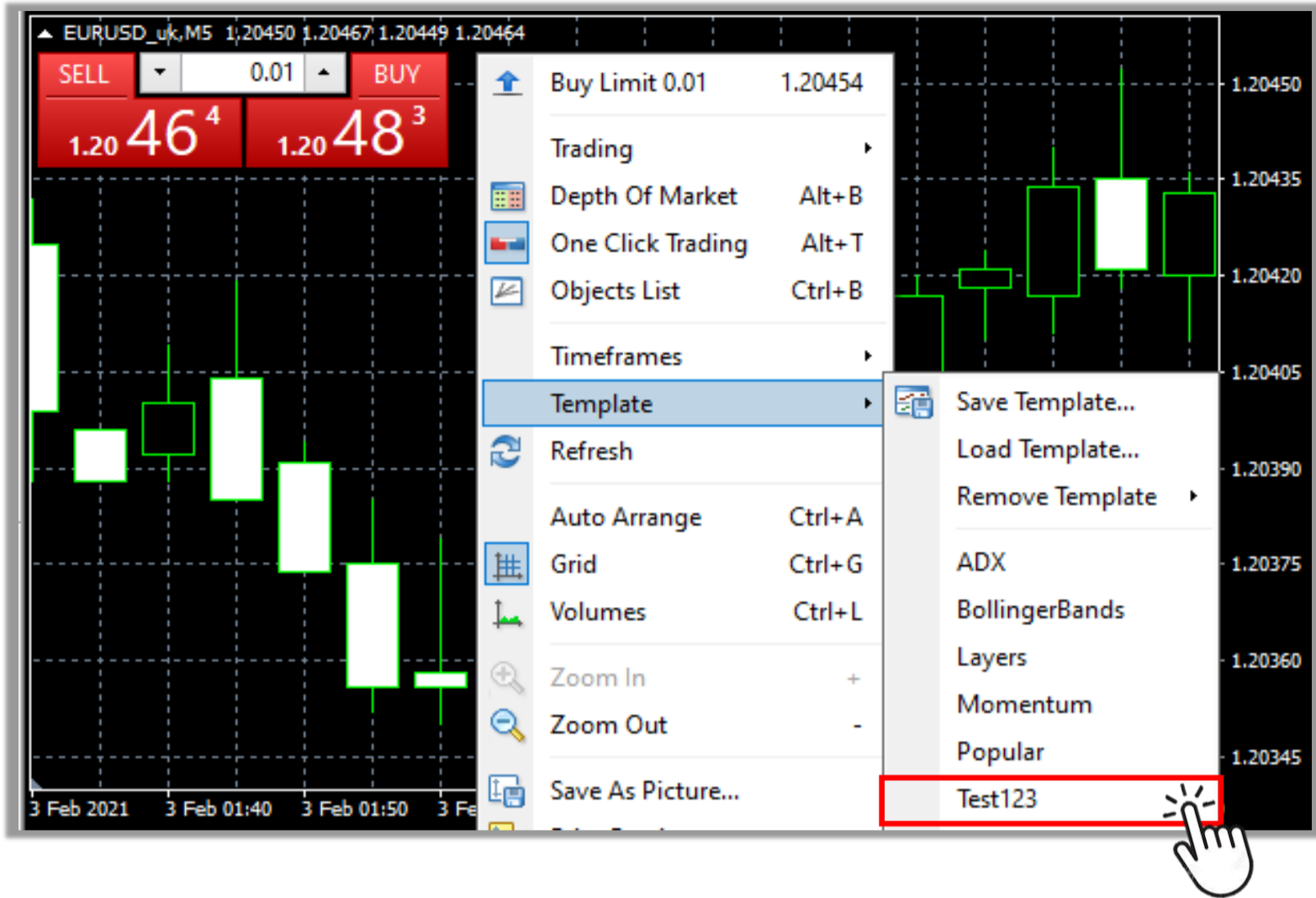
STEP 5 Open the chart you want to apply the saved template and right click anywhere on it
Please see "How to open a new chart" guide



STEP 6 Click Template



STEP 7 Find the template you have saved and click on it



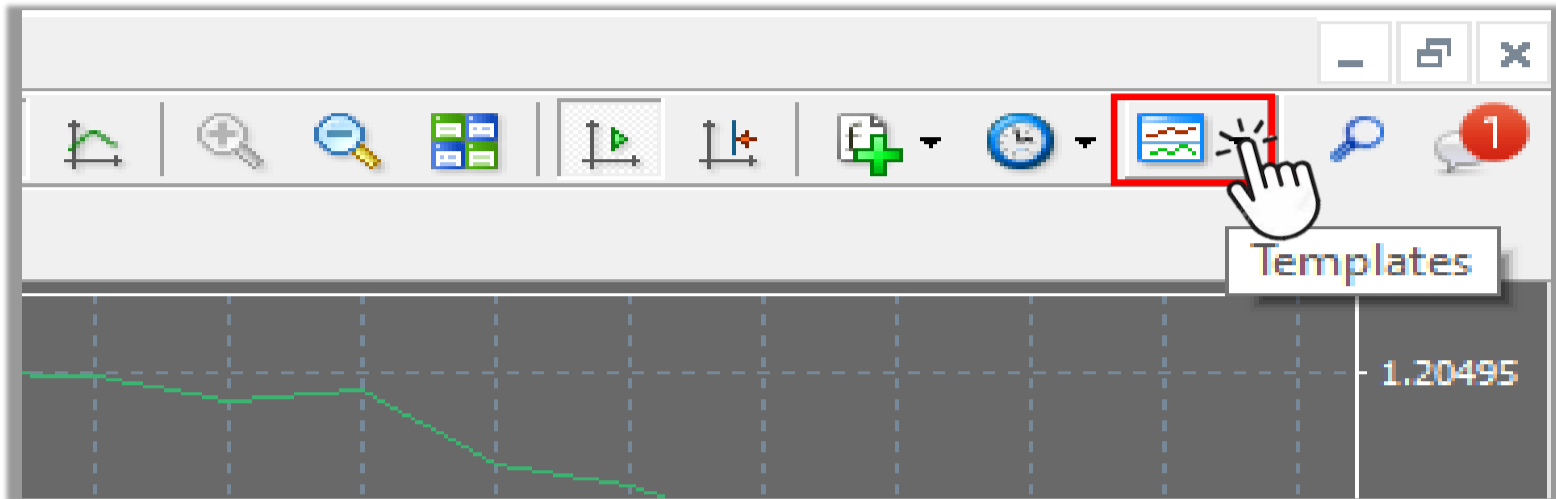
After the template is loaded successfully, the saved chart settings (layout, indicators, etc) will be applied to the new chart.



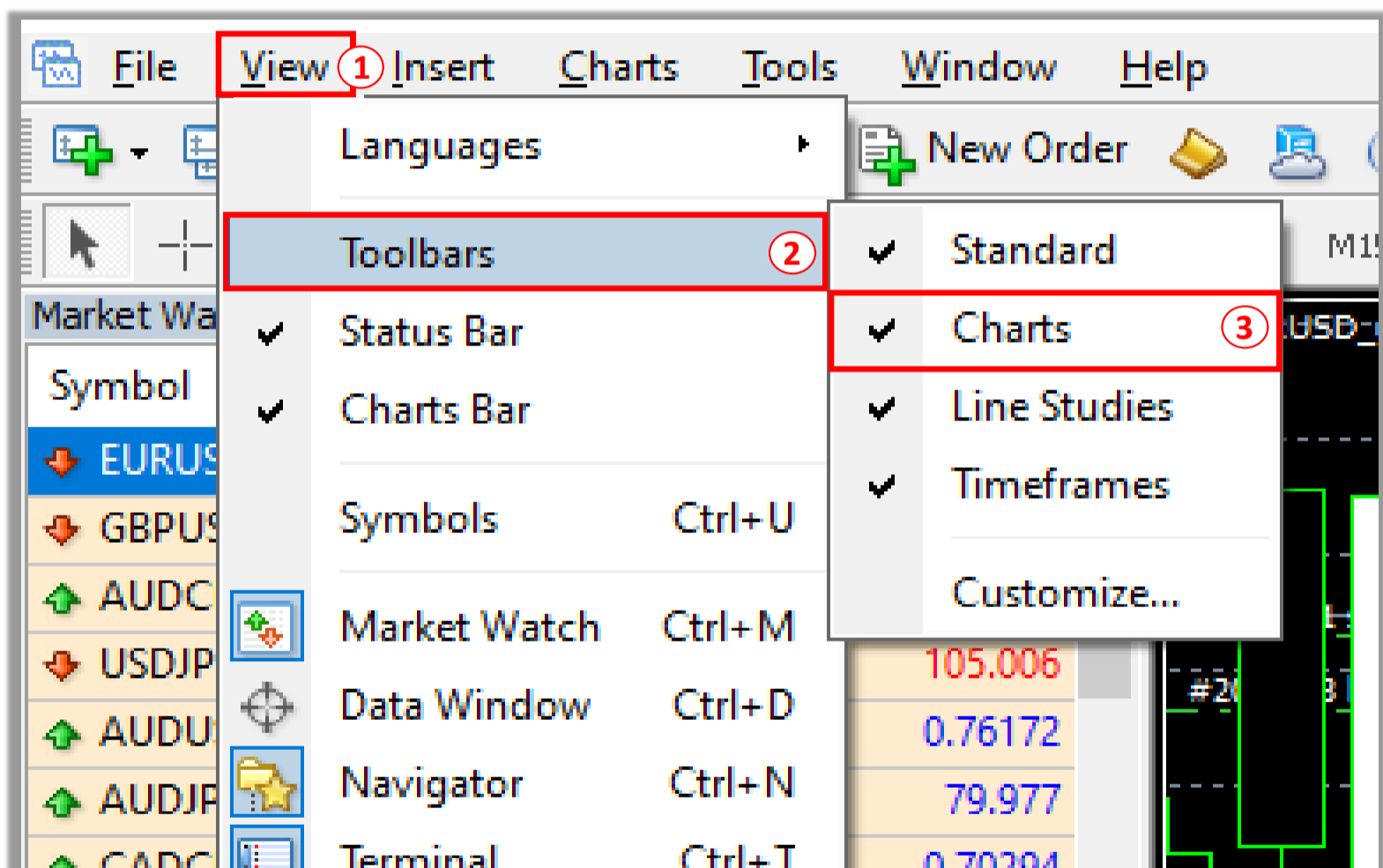
Method 2

On Toolbars located on top of the platform screen

STEP 1 Open the chart you want to save the new settings and click **Templates** icon on Toolbars

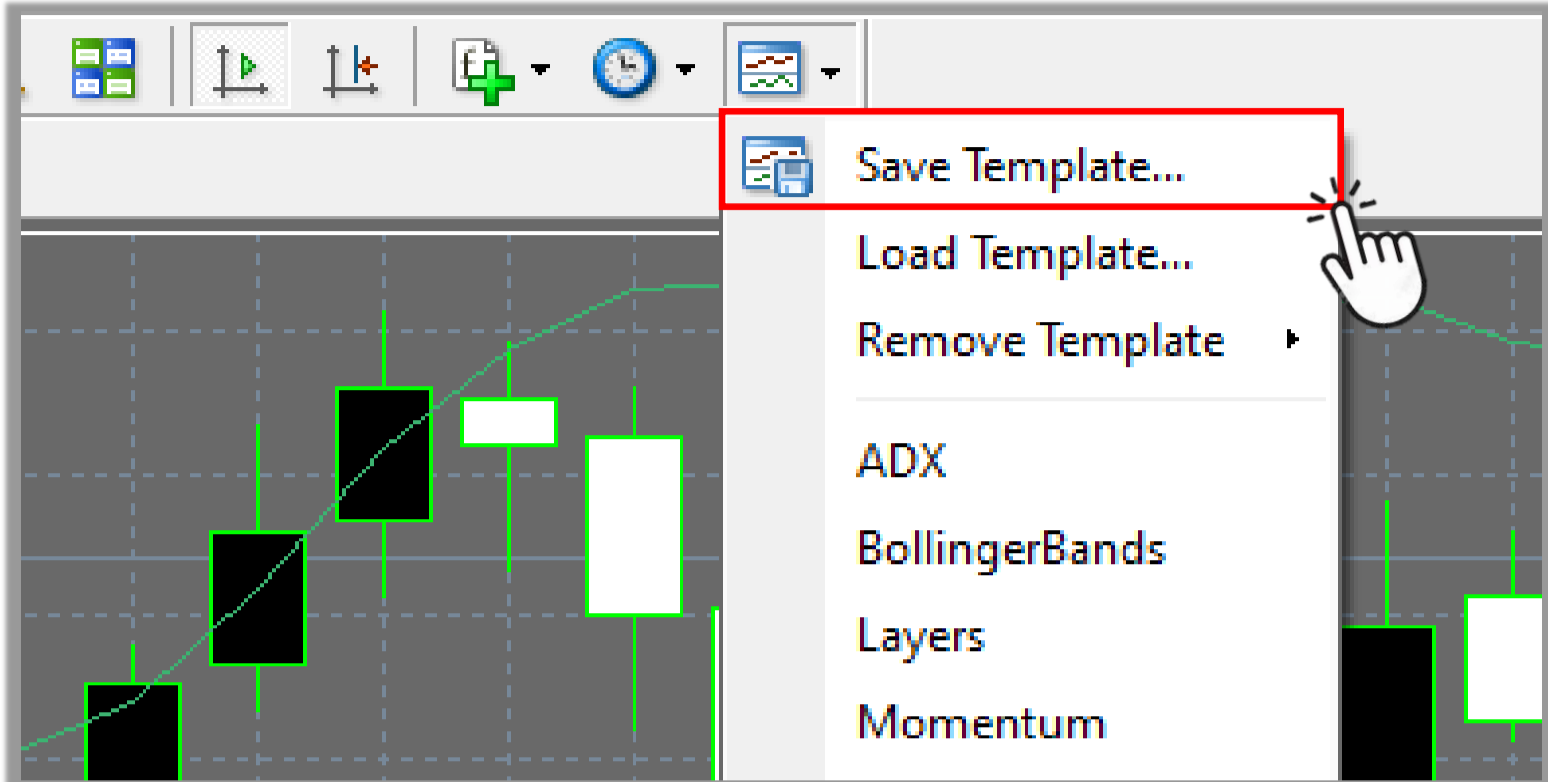


Note: If you don't see Templates icon the on your screen, please follow the below instructions.

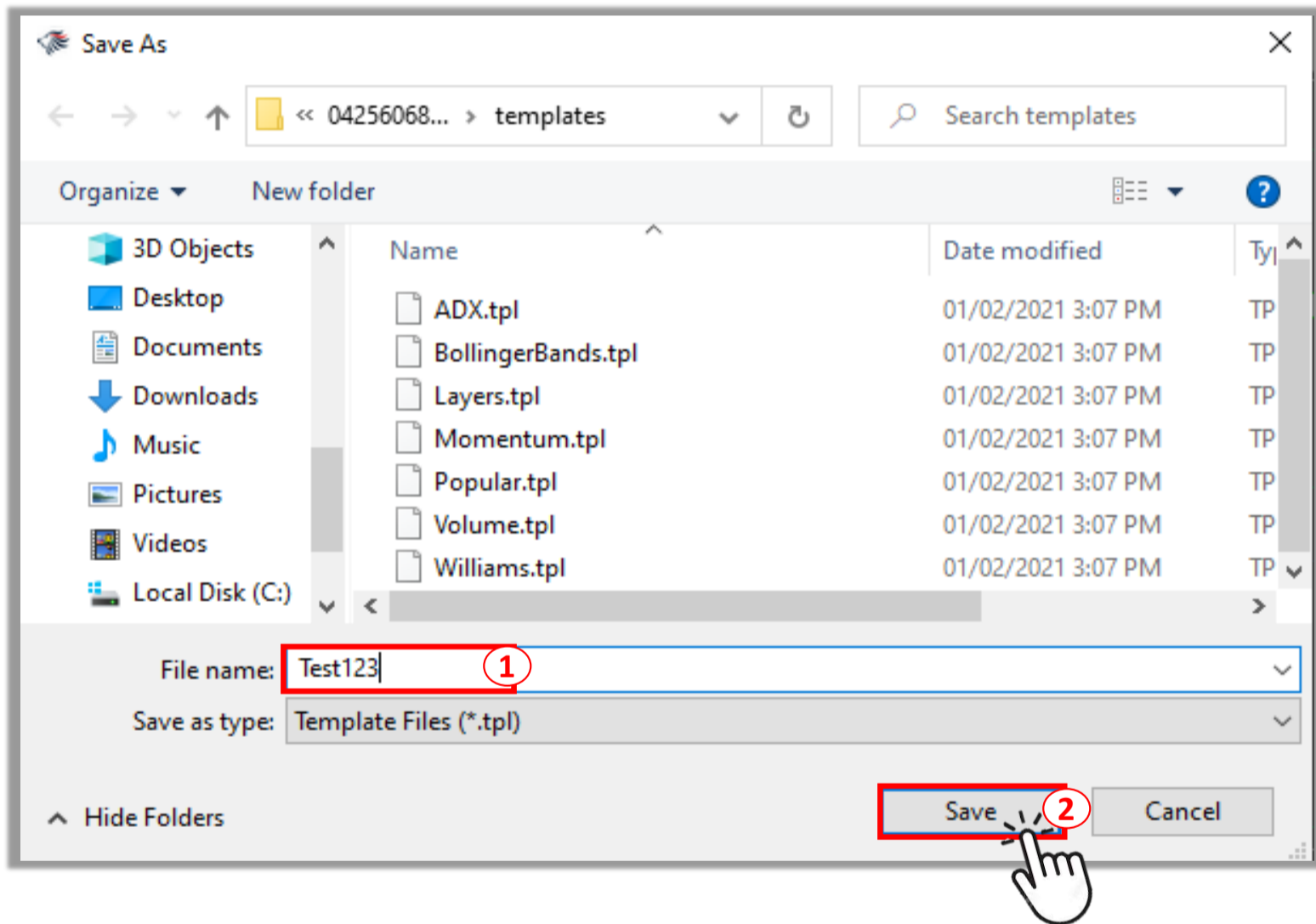


- ① Click **View** on Menu bar
- ② Click **Toolbars**
- ③ Click to put a checkmark (✓) in **Charts**

STEP 2 Click **Save Template**



STEP 3 Save the template

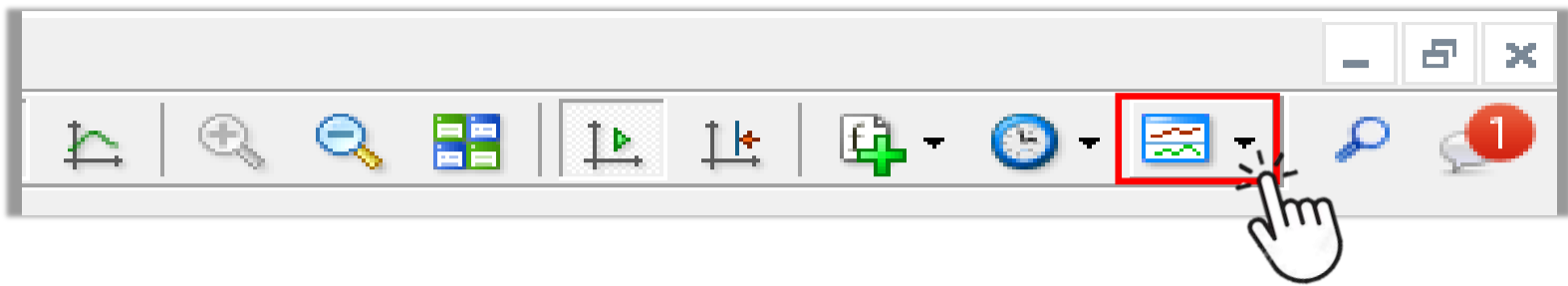


1 Enter the name you want to save the template as

2 Click **Save**

STEP 4

Open the chart you want to apply the saved template to and click **Templates** icon on Toolbars
Please see "how to open a new chart" guide



STEP 5

Find the template you have saved and click on it to apply to the new chart

