



# **LION iPhone Trader**

# **User Manual**



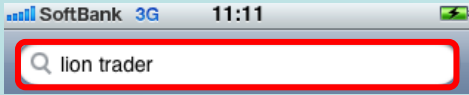
# Contents

Download		•	P3
<hr/>			
Logon		•	P4
<hr/>			
Menu	<ul style="list-style-type: none"><li>• Menu</li><li>• Dealing Rates</li><li>• Accounts</li><li>• Orders</li><li>• Positions</li><li>• History</li><li>• Charts</li><li>• Instruments</li><li>• Settings</li></ul>	<ul style="list-style-type: none"><li>•</li><li>•</li><li>•</li><li>•</li><li>•</li><li>•</li><li>•</li><li>•</li><li>•</li></ul>	<ul style="list-style-type: none"><li>P5</li><li>P6</li><li>P7</li><li>P8</li><li>P9</li><li>P10</li><li>P11</li><li>P13</li><li>P14</li></ul>
<hr/>			
Trade	<ul style="list-style-type: none"><li>• Open a New Position (Market Order)</li><li>• Entry Orders</li><li>• Preset Stop/Limit Orders for Open Positions or Entry Orders</li><li>• Close Positions (Market Order)</li><li>• Hedge Positions</li></ul>	<ul style="list-style-type: none"><li>•</li><li>•</li><li>•</li><li>•</li><li>•</li></ul>	<ul style="list-style-type: none"><li>P15</li><li>P16</li><li>P17</li><li>P19</li><li>P20</li></ul>
<hr/>			
Useful Features	<ul style="list-style-type: none"><li>• Forgot Password</li><li>• Status Bar</li><li>• System Messages</li></ul>	<ul style="list-style-type: none"><li>•</li><li>•</li><li>•</li></ul>	<ul style="list-style-type: none"><li>P21</li><li>P21</li><li>P22</li></ul>

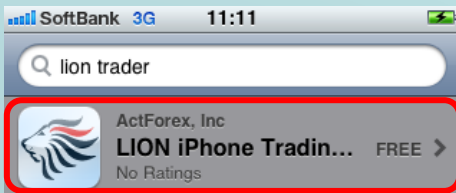
# Download



1. Tap iPhone **App Store**.



2. Input the keyword **lion trader** and search the application.



3. The search results will be displayed. Tap **LION iPhone Trading** application please.



4. Tap **Free**.

5. Tap **INSTALL**.



5. When you have finished the download you will find a **LION** icon on you smart phone.

# Logon



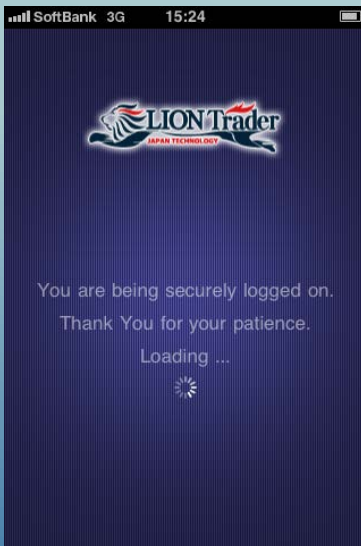
1. Tap **LION** Icon.



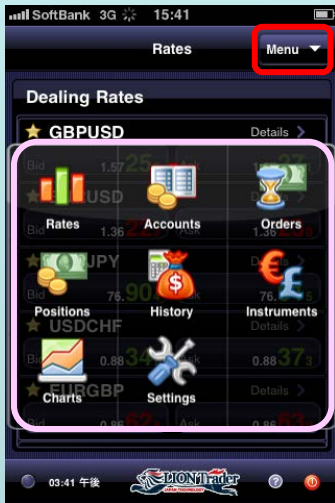
2. Input your **Username** and **Password**.

3. Tap **V** at the right of Account Type, select your Account Type, then tap **Sign In**.

\* Before you tap **Sign In**, you can switch the slider from **OFF** to **ON** at the right of **Save User Name**. You need not then input Username the next time you log in.



# Menu



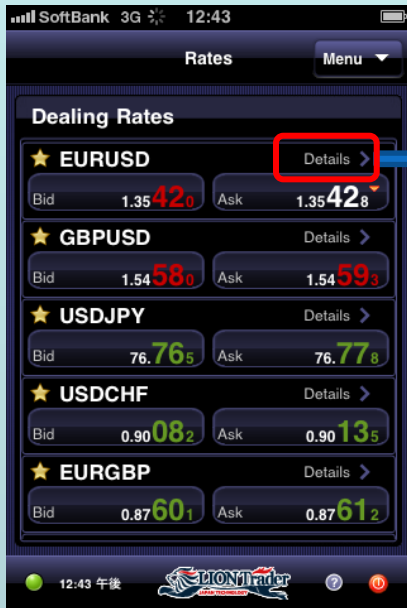
Open main menu by tapping the **Menu** button in the upper right corner of the application.

This menu gives you the access to the main application screens:

- Rates
- Accounts
- Orders
- Positions
- History
- Instruments
- Charts
- Setting

## Menu - Rates

### Rate



To view Dealing Rates, go to **Menu > Rates**.

The Rates screen shows you the streaming Bid and Ask rates for the instruments you have subscribed.

Select a Bid or Ask rate to create a Market or Entry Order.

Tap **Details >** button to see detailed information and simple chart about that instrument.

### Instrument Details

To view Instrument Details, go to **Dealing Rates > Details**.

Here you can view:

- Current Bid and Ask rates
- Daily High and Low
- Daily Net Change in pips and as percentage
- Pip Value
- Charting Functionality

You can change chart intervals by selecting the different time frames above the chart.

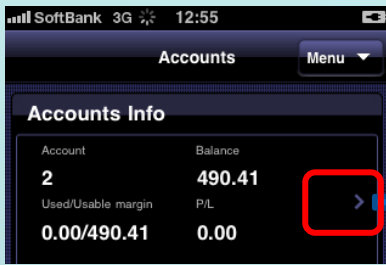
Select a **Bid** or **Ask** rate to create a Market or Entry Order.

Tap **Menu** to open the application menu.

Tap **Rates** to go back to the Rates screen.



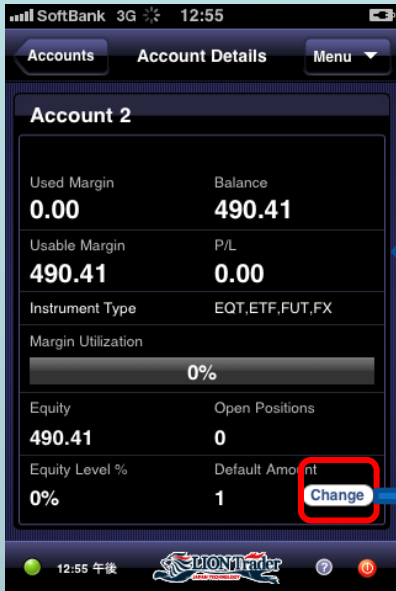
## Monitor your Account



To view Accounts, go to **Menu > Accounts**.

You can view the following information:

- Account Number
- Current Balance
- Used/Usable Margin
- Current P/L



Tap > button to see detailed information and simple chart about that instrument.

You can view the Account Details below:

- Account number
- Used Margin
- Current Balance
- Usable Margin
- Current P/L
- Margin Utilization
- Current Equity
- the number of Open Positions
- Equity Level % (the percentage of equity to Used Margin)
- Default Amount

### Change Default Amount

To change the default amount, tap **Change** button.



You can set DA(lots) as fixed number of lots, which can be bought / sold on a particular instrument.

You can also set DA(% of usable margin). This automatically generates a default lot size based on your Usable Margin and Margin Requirement for the instrument traded.

Tap the option button then enter a new amount at the right, and tap **OK**.

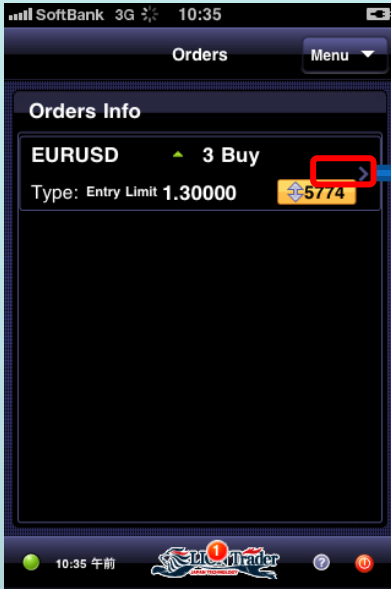
Tap **Cancel** to discard any changes and close the dialog box.

## View Orders

To view Orders, go to **Menu > Orders**.

You can view the following information:

- the Instrument
- Buy/Sell
- Order Amount
- Order Type
- Order Rate
- Proximity to market (in pips).

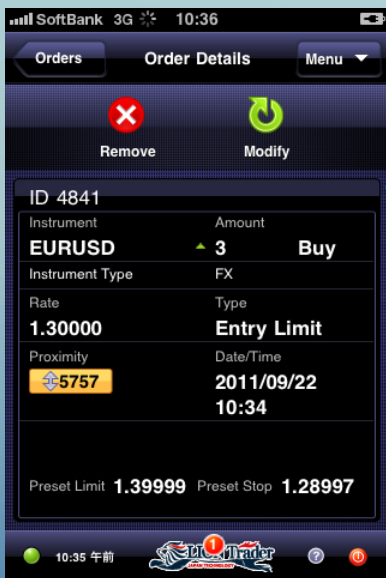


## View Order Details

You can edit or remove an order by tapping an order panel on the Orders screen and selecting **Remove/ Modify** option from the context menu.

You can view the following information:

- Order ID
- the Instrument
- Buy/Sell
- Order Rate
- Order Type
- Proximity to market (in pips)
- Date/Time of order creation
- Position (Trade ID)
- Position Rate



Tap **Remove/Modify** button allows you to remove or modify the order.



## View Positions



To view Positions, go to **Menu > Positions**.

This screen shows a list of your open positions, ordered by Trade ID.

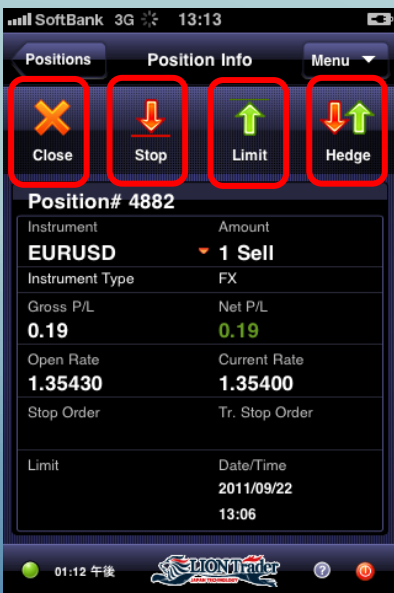
You can view the following information:

- the instrument
- position amount
- Buy/Sell
- open date/time
- position open rate
- Net P/L

Tap **Summary** button to get the information about open positions combined by instruments and directions of trade.

## View Position Details

Tap **>** button to see the **Position Details**.



This screen shows a detailed view of a position and allows you create Stop/Limit order, hedge or close a position.

You can view the following information:

- Position # (Trade ID)
- the Instrument
- Position Amount
- Buy/Sell
- the Gross P/L and the Net P/L
- Position Open Rate and Current Rate
- the Order Number of Stop/Trailing Stop and Limit
- Open Date/Time

Tap **Close** at the top of the screen to close the position(P19).

Tap **Stop** or **Limit** at the top of the screen to create a stop or limit order(P17,18).

Tap **Hedge** at the top of the screen to hedge the position(P20).

## Menu - History

### View History

Closed Positions			
GBPJPY	1	Buy	>
2011/09/16 14:59	121.418	0.07	
EURUSD	1	Buy	>
2011/09/16 13:54	1.38582	0.08	
EURUSD	1	Buy	>
2011/09/15 17:42	1.37756	0.06	
GBPUSD	1	Buy	>
2011/09/15 16:28	1.57493	-0.78	
GBPUSD	1	Sell	>
2011/09/15 16:08	1.57610	0.57	

To view History, go to **Menu > History**.

This screen shows a list of your closed positions, ordered chronologically by closing date and time.

You can view the following information:

- the Instrument
- Position Amount
- Buy/Sell
- Close Date/Time
- Position's Close Rate
- Net P/L

### View Closed Position Details

Tap **>** button to see the Closed Position Details.

Position #4654(Account 2)	
Instrument	Amount
GBPUSD	1 Sell
Instrument Type	FX
Gross P/L	Net P/L
0.57	0.57
Open Rate	Open Date/Time
1.57700	2011/09/15 15:42
Close Rate	Close Date/Time
1.57610	2011/09/15 16:08
Reason	
Closed by Trader	

This screen shows a detailed view of a closed position.

You can view the following information:

- the Instrument
- Position Amount
- Buy/Sell
- Position Open and Close Date/Time
- Position Open Rate and Close Rate
- Gross P/L and Net P/L
- the Reason for Closure


Tap **History** to return to the History screen.

## Instrument Subscription



To subscribe or unsubscribe an Instrument, go to **Menu > Instruments**.

This screen allows you to subscribe or unsubscribe from trading instruments.

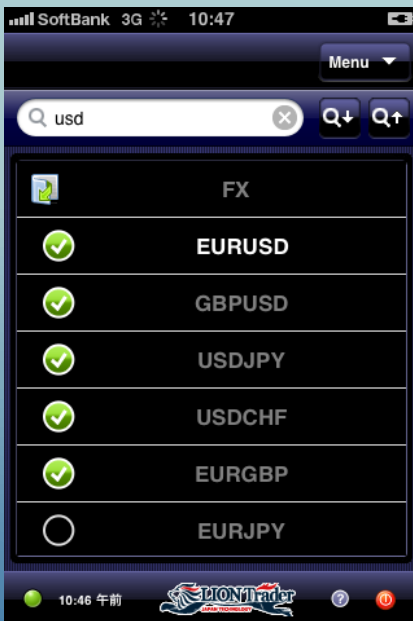
If instruments are grouped in folders, tap the  button to expand/collapse the folders.


When you unsubscribe\* from an instrument, it will no longer be shown in your trading applications.

\* You cannot unsubscribe from instruments on which you have open positions or pending orders.

\* Instrument subscription is synced across all trading applications – Android/iPad, LION Trader, LION Web Trader, etc.

## Search Instruments

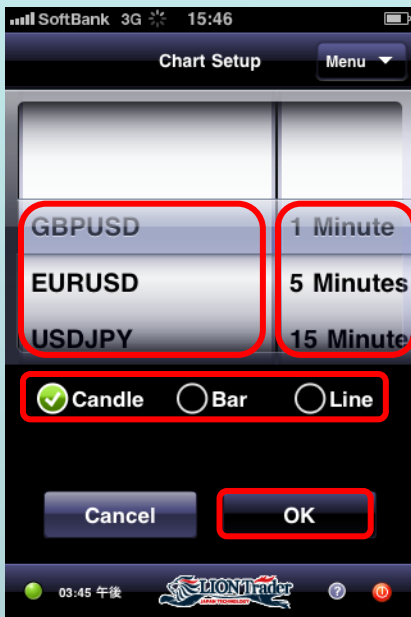


Use the search box and the  to search for a specific instrument(s).

Check the box to subscribe to an instrument. Uncheck the box to unsubscribe an instrument.

## Menu - Charts

### View Charts



To create a Chart, go to **Menu > Charts**.

Select the desired instrument and the time interval from the scrolling drum.

Select the chart type (Candle, Bar, or Line).

Tap **OK**, you can create a new chart.



### Chart Screen

Tap **Buy/Sell** button to open a new Buy/Sell position on the current instrument.

Tap **Indicators** to add indicators to the chart.

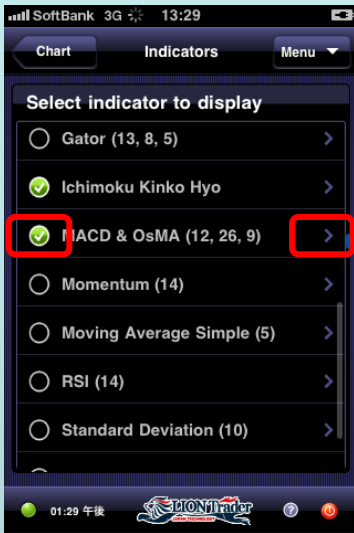
Tap **Setup** to go back the screen of Charts.

Scroll the chart left or right by dragging it horizontally.

Zoom in and out of the chart by using the standard multi-touch zoom feature.

You can tilt the phone horizontally to view the chart in horizontal mode. Tilt it vertically to return to vertical mode.

## Add Indicators



To create a Chart, go to **Menu > Charts > Indicators**.

This screen shows a list of available indicators and lets you apply indicators to your chart.

The numbers in parentheses indicate the current settings of the indicator.

You can apply a maximum of 2 indicators over the chart and one indicator outside the chart.

Tap  to the left of an indicator to add/remove it to/from the chart.

Tap **>** button next to an indicator to change its settings.



### Indicator Setup Screen

This screen allows you to change the settings of an indicator such as period, colors, etc.

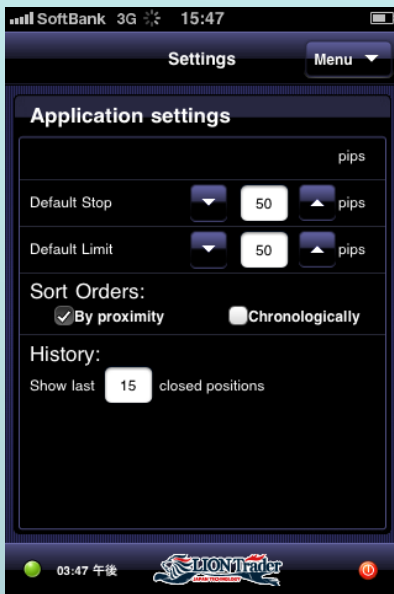


Tap **OK** to apply your changes and return to the Indicators screen.

Tap **Cancel** to discard your changes and return to the Indicators screen.

Tap **Chart** on Indicators screen to complete the Indicator settings.

## Settings



To configure application settings, go to **Menu > Settings**.

### **Default Stop:**

You can input a number to set the Default Stop proximity to market for a Stop order.

### **Default Limit:**

You can input a number to set the Default Limit proximity to market for a Stop order.

### **Sort Orders:**

You can sort orders on the Orders' screen either by selecting proximity or in chronological order.

### **History:**

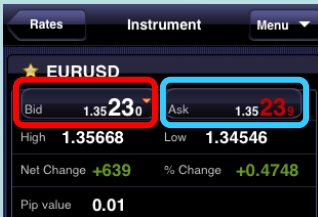
You can input a number to set how many of the most recent closed positions to show on the History screen.

# Trade - Open a New Position (Market Order)

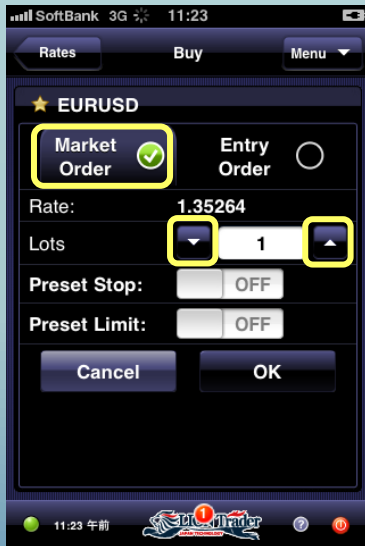
## Open a New Position with Market Order



To open a new **sell** position, tap **Bid** on the **Rates/ Instrument Details** screen or tap **Sell** button on **Charts** screen.



To open a new **buy** position, tap **Ask** on the **Rates/ Instrument Details** screen or tap **Buy** button on **Charts** screen.



Tap radio button to the right of **Market Order**.

**Rate:** For a market order, this is the current market rate.

**Lots:** You can edit the order amount with the ▼/▲ buttons or by tapping the amount and entering a number.

(How to preset stop/limit order please go to page17.)

Tap **OK** to place your order.

Tap **Cancel** or **Rates** to cancel the order and return to the Rates screen.

Tap **Menu** button to open the application menu.



# Trade - Entry Order

## Create an Entry Stop/Limit Order

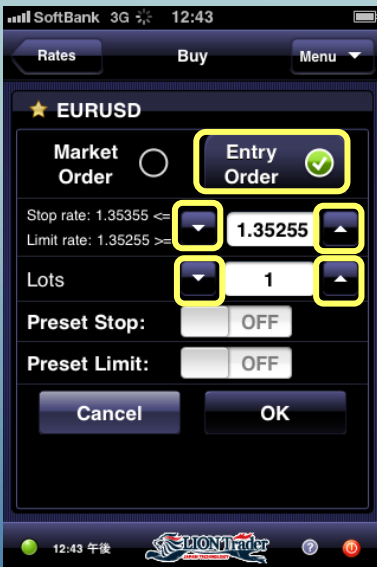
Entry Stop and Entry Limit orders are orders to open a new position at an off-market price. If that price is reached, the entry order will be triggered and an open position will be created.



To create a new sell entry order, tap **Bid** on the **Rates/ Instrument Details** screen or tap **Sell** button on **Charts** screen.



To create a new buy entry order, tap **Ask** on the **Rates/ Instrument Details** screen or tap **Buy** button on **Charts** screen.



Tap radio button at the right of **Entry Order**.

**Rate:** For an entry order, the order rate is editable by using the ▼/▲ buttons or by tapping the rate and entering a number. The rate you enter must follow the parameters specified next to the edit box.

**Lots:** You can edit the order amount with the ▼/▲ buttons or by tapping the amount and entering a new one.

(How to preset stop/limit order please go to page17.)

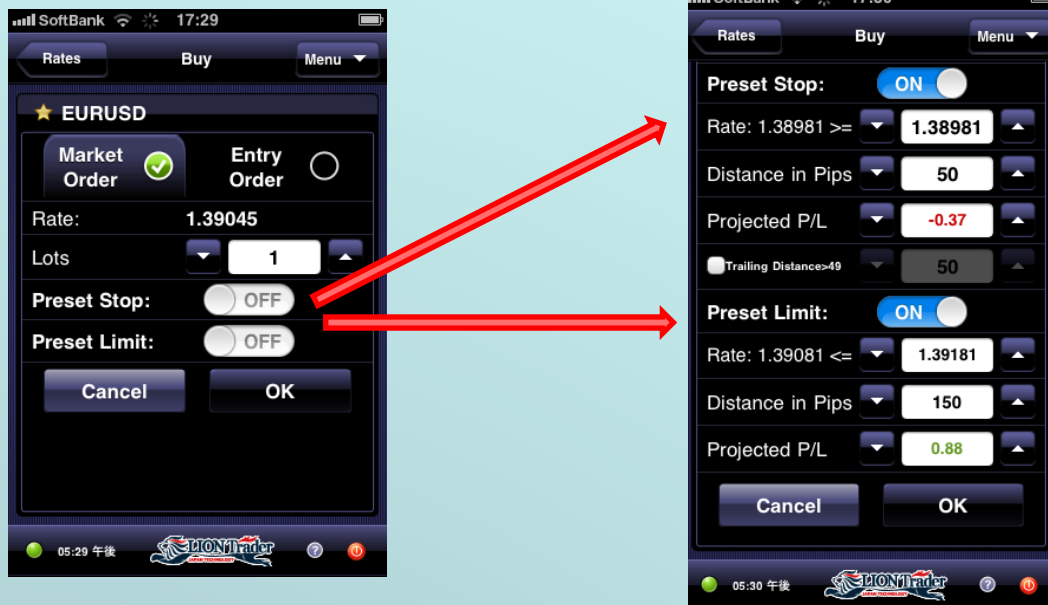
Tap **OK** to place your order.

Tap **Cancel** or **Rates** to cancel the order and return to the Rates screen.

Tap **Menu** button to open the application menu.



## Preset Stop/Limit Order for Entry Orders



To preset stop/limit orders for an entry order, go to **Menu > Orders > Order Details > Modify**.

Switch the slider to **ON** to enable a preset stop/limit.

There are three ways to preset a stop/limit order:

- edit the order Rate
- edit the Distance in Pips
- edit the Projected P/L

When one of the boxes is changed, the other two are updated automatically.

You can change the order Rate with the ▼/▲ buttons or by tapping the rate and entering a number.

The preset stop/limit rate must be within the range specified.

Tap **OK** to place your order.

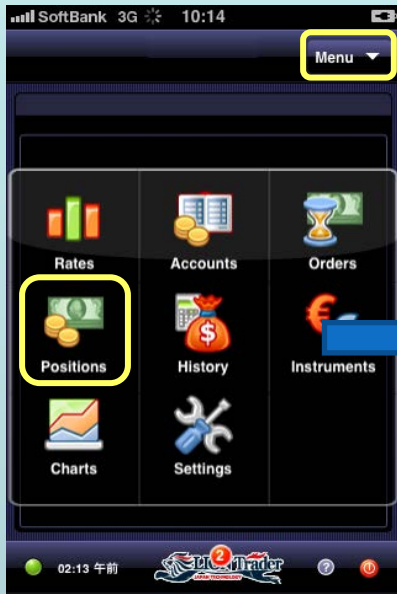
Tap **Cancel** or **Order Details** to cancel the order and return to the order details screen.

Tap **Menu** button to open the application menu.

Tap **Remove** to delete the order and return to the order screen.

# Trade - Close Positions (Market Order)

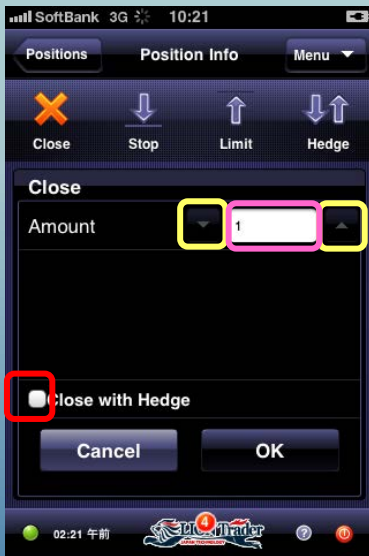
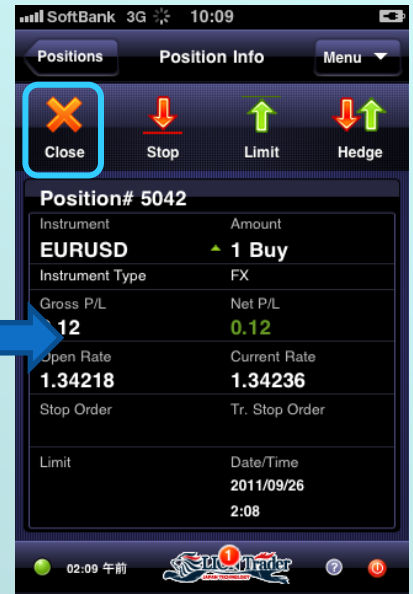
## Close Positions with Market Order



To close a position, go to **Menu > Positions**



Select the position that you want to close.



Tap **Close** button to close a Position:

**Amount:** You can edit the **Amount** with the ▼/▲ buttons or by tapping the amount and entering a number to change the position amount that you want to close .

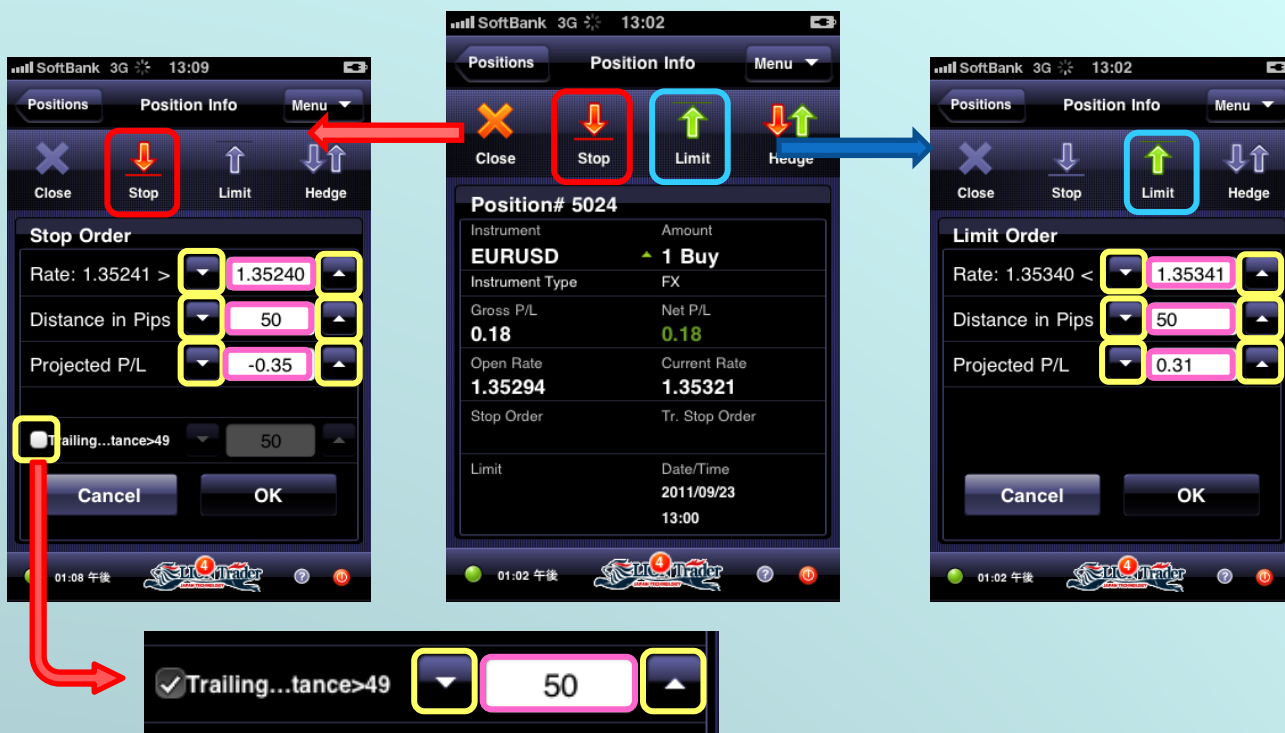
You can close positions with a hedge if you have hedged positions, by tapping **Close with Hedge**.

Tap **OK** to close your position.

Tap **Cancel** to cancel the closure process and return to the Positions page.

Tap **Menu** button to open the application menu.

## Preset Stop/Limit Order for Open Positions



To preset stop/limit orders for open positions, go to **Menu > Positions > Position Details > Stop/Limit**.

There are three ways to preset a stop/limit order:

- edit the order Rate
- edit the Distance in Pips
- edit the Projected P/L

When one of the boxes is changed, the other two are updated automatically.

You can change the order Rate with the ▼/▲ buttons or by tapping the rate and entering a number.

You can check the Trailing Distance box and enter a trailing stop distance.

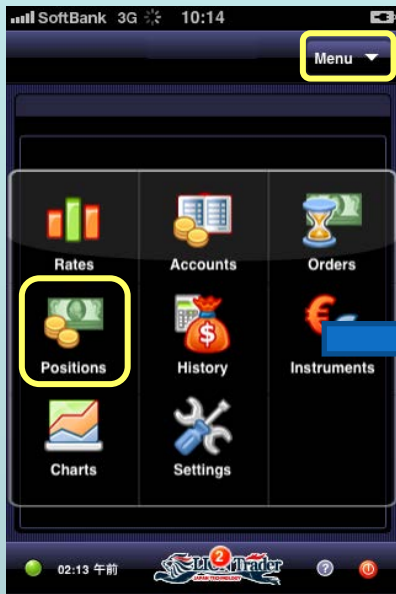
The preset stop/limit rate must be within the range specified.

Tap **OK** to place your order.

Tap **Cancel** or **Rates** to cancel the order and return to the Rates screen.

Tap **Menu** button to open the application menu.

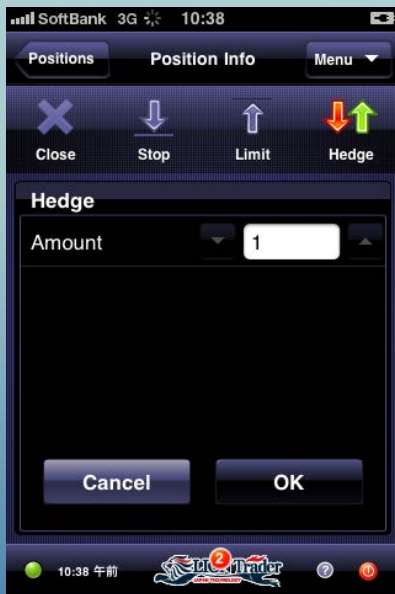
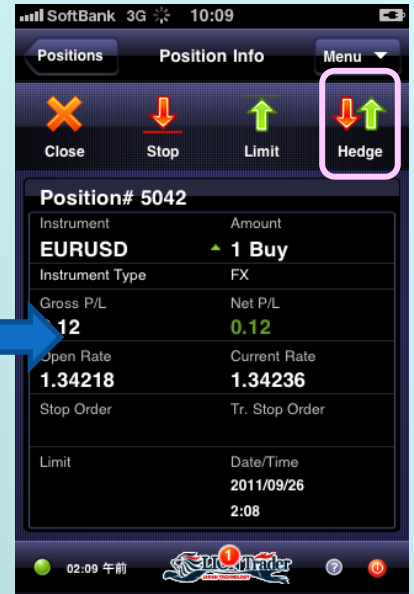
## Hedge Positions



To hedge a position, go to **Menu > Positions**



Select the position that you want to hedge.



Tap **Hedge** button to hedge a Position:

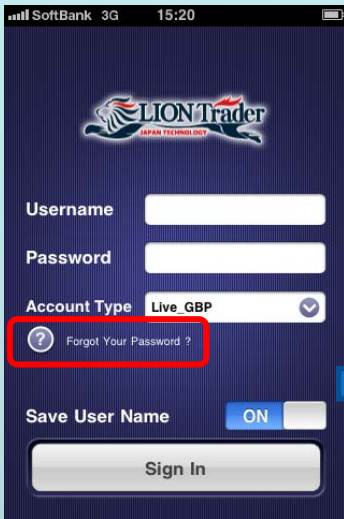
**Amount:** You can edit the **Amount** with the ▼/▲ buttons or by tapping the amount and entering a new one to change the position amount that you want to hedge .

Tap **OK** to hedge your position.

Tap **Cancel** to cancel the hedging process and return to the Positions page.

Tap **Menu** button to open the application menu.

## Forgot Password

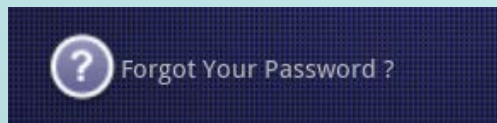


If you forgot your password:

Tap **Forgot your Password?** Icon on login screen.

Your password will be reset, and the new password will be sent to you by email.



Please note that email will be sent to the registered email address that we have for you.



## Status Bar



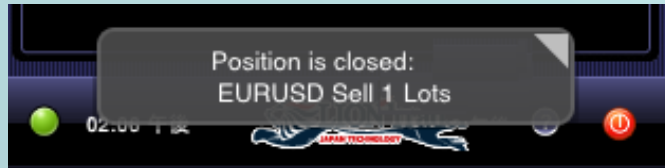
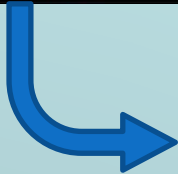
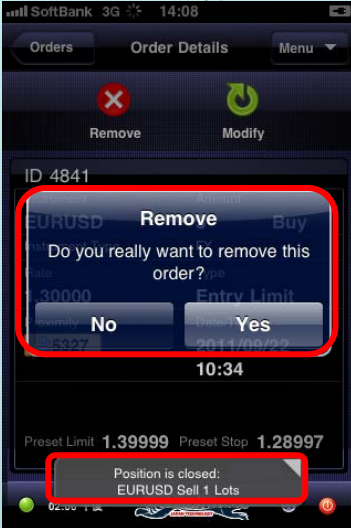
The Status Bar contains the following elements:

1. Connection status icon  
(Green ● = connected; Gray ● = disconnected)
2. System time  
**Note:** The time zone displayed in the system time can be changed by the trader through the settings of the **LION Trader** or **LION Web Trader** application. You cannot change the time zone through **LION iPhone Trader**.
3. Help button. Tap the help button  any time to open contextual help for the currently active screen.
4. Log off button. Tap  button to exit from the application.



# System Message

There are two types of messages shown to the trader:

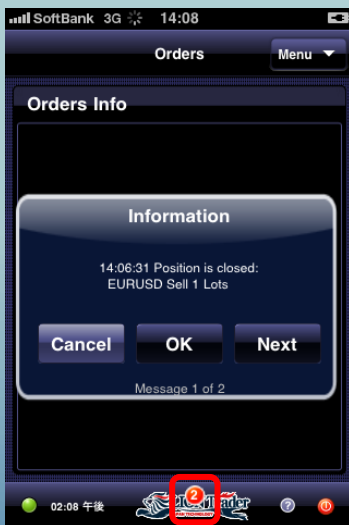


## 1. Pop Messages

Messages that are shown immediately as a result of some action or event. These include:

- Messages received by trader as a result of his actions. Examples: Insufficient Equity when trying to open a new position, entering order rate outside of permitted range, etc.
- Margin Call messages
- Lost connection messages
- Order reject messages

These messages are shown as a pop-up at the time they are received on current screen.



## 2. Stored Messages

These messages accumulate in the background and can be viewed by the trader at any time.

The number of unread messages is indicated in the red circle in the middle of the status bar. When you tap the number, the first received message is displayed.

Tap **Cancel** to remove the message and close the message window.

Tap **Next** advances to the next message.

Tap **OK** closes the message window.