



LION Android Trader

User Manual



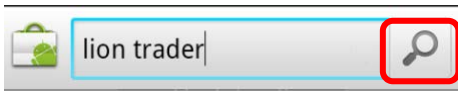
Contents


Download		•	P3
<hr/>			
Logon		•	P4
<hr/>			
Menu	<ul style="list-style-type: none">• Menu• Rates• Accounts• Orders• Positions• History• Charts• Instruments• Settings	<ul style="list-style-type: none">•••••••••	<ul style="list-style-type: none">P5P6P7P8P9P10P11P12P13
<hr/>			
Trade	<ul style="list-style-type: none">• Open a New Position(Market Order)• Entry Orders• Preset Stop/Limit Orders for Open Positions or Entry Orders• Close Positions (Market Order)• Hedge Positions	<ul style="list-style-type: none">•••••	<ul style="list-style-type: none">P14P15P16P18P19
<hr/>			
Useful Features	<ul style="list-style-type: none">• Forgot Password• Status Bar• System Messages	<ul style="list-style-type: none">•••	<ul style="list-style-type: none">P20P20P21

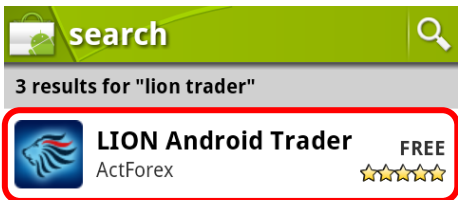
Download



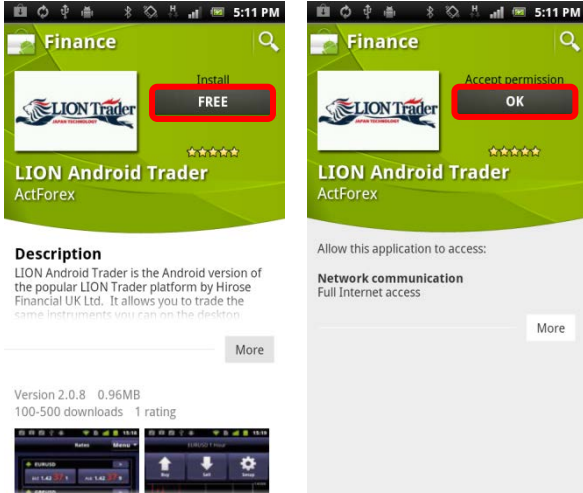
1. Tap Android **Market**.



2. Tap  on the upper-right corner. Input the keyword **lion trader** and search the application.



3. The search results will be displayed. Tap **LION Android Trader** application please.



4. Tap **Free**.

5. Tap **OK**.

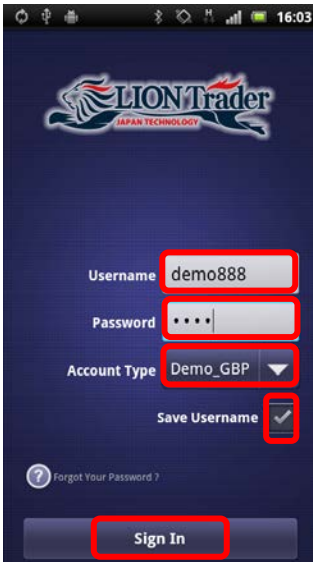


5. When you have finished the download you will find a **LION Android** icon on your smart phone.

Logon



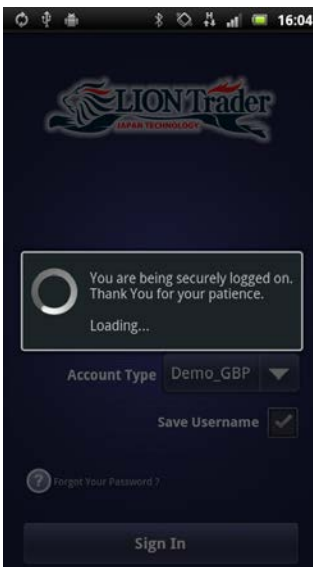
1. Tap **LION Android** Icon.



2. Input your **Username** and **Password**.

3. Tap ▼ to the right of **Account Type**, then select your Account Type, then tap **Sign In**.

* Before you tap **Sign In**, you can tap **Save Username**. You need not then input your Username the next time you log in.



Menu



There are two menus available on every screen.

1. Main Menu

Open main menu by tapping **Menu** button in the upper right corner of the application.

This menu gives you the access to the main application screens:

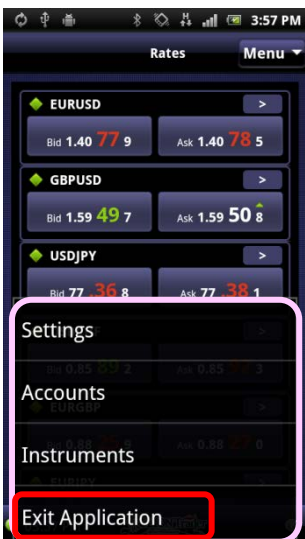
Rates, Accounts, Orders, Positions, History, Charts, Instruments and Setting.



2. Icon Menu

Icon menu is opened with the device **Menu** button.

From this menu you can access to the Rates, Orders, Positions, Charts and History screens.



Tap **More** button to open the extended menu without icons.

From this menu you can go to the Settings, Accounts and Instruments screens.

Tap **Exit Application** to log off from LION Android Trader.

Menu

Rate



To view Dealing Rates, go to **Menu > Rates**.

The Rates screen shows you the streaming Bid and Ask rates for the instruments you have subscribed.

Select a Bid or Ask rate to create a Market or Entry Order.

Tap > button to see detailed information and simple chart about that instrument.



Instrument Details

To view Instrument Details, go to **Dealing Rates > Details**.

Here you can view:

- Current Bid and Ask rates
 - Daily high and low
 - Daily Net change in pips and as percentage
 - Pip value
 - Charting functionality
- You can change chart intervals by selecting the different time frames above the chart.

Press the **BACK** key to return to the Dealing Rates screen.

Tap **Menu** to open the application menu.

Monitor your Account



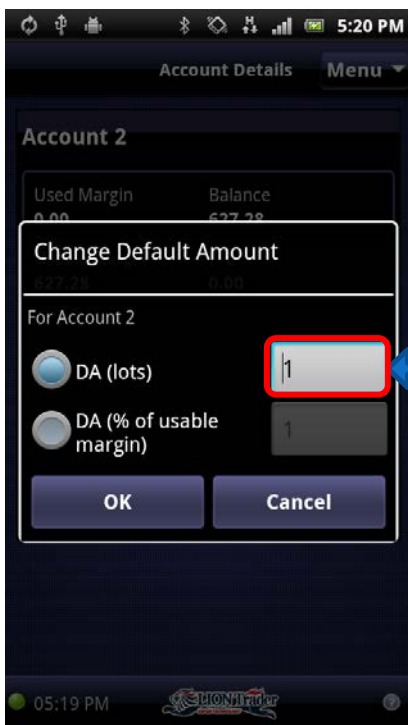
To view Accounts, go to **Menu > Accounts**.

You can view the following information:

- Account number
- Used Margin
- Usable Margin
- current Balance
- current P/L
- current Equity
- equity level % (the percentage of equity to Used Margin)
- the number of Open Positions
- Default Amount

Change Default Amount

To change the default amount, tap **Change** button.



You can set DA(lots) as fixed number of lots, which can be bought / sold on a particular instrument.

You can also set DA(% of usable margin). This automatically generates a default lot size based on your Usable Margin and margin requirement for the instrument traded.

Tap the option button then enter a new amount at the right, and tap **OK**.

Tap **Cancel** to discard any changes and close the dialog box.

Menu - Orders

View Orders



To view Orders, go to **Menu > Orders**.

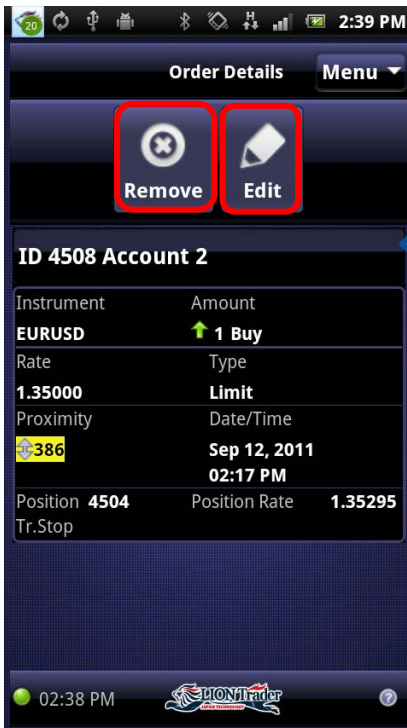
You can view the following information:

- the instrument
- Buy/Sell
- order Amount
- order Type
- order Rate
- Proximity to market (in pips).

You can edit or remove an order by long pressing an order panel on the Orders screen and selecting **Remove/ Edit** option from the context menu.

View Order Details

Tap **>** button to view Order Details.



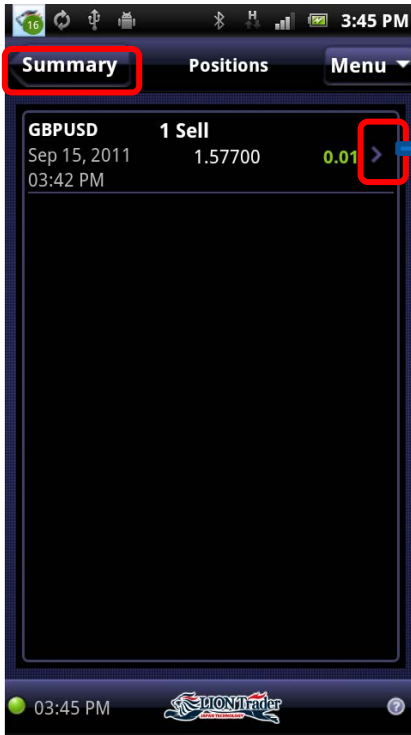
This screen shows a detailed view of an order and allows you to modify or remove the order.

You can view the following information:

- Account number
- Date/Time of order creation
- Position ID and Position Rate (if the order is aimed at closing a position)
- order Amount
- order Type
- order Rate
- and Proximity to market (in pips)

Tap **Remove/Edit** button to remove or modify the order(P17) .

View Positions



To view Positions, go to **Menu > Positions**.

This screen shows a list of your open positions, ordered by Trade ID.

You can view the following information:

- the instrument
- Buy/Sell
- position amount
- open date/time
- position open rate
- Net P/L

Tap **Summary** button to get the information about open positions combined by instruments and directions of trade.

View Position Details

Tap **>** button to see the **Position Details**.

This screen shows a detailed view of a position and allows you create Stop/Limit orders, hedge or close a position.

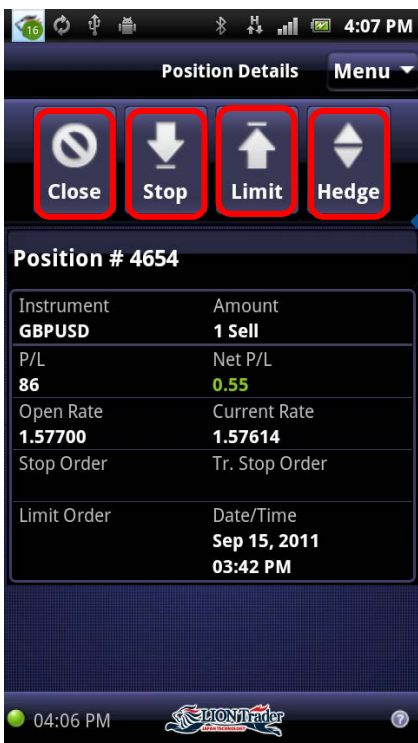
You can view the following information:

- the Instrument
- Buy/Sell
- position Amount
- open Date/Time
- position Open Rate and Current Rate
- the Gross P/L and the Net P/L
- the order number of stop/trailing stop and limit

Tap **Close** at the top of the screen to close the position(P18).

Tap **Stop** or **Limit** at the top of the screen to create a stop or limit order(P16).

Tap **Hedge** at the top of the screen to hedge the position(P19).



Menu - History

View History



Closed Positions		
Aug 24, 2011 01:24 PM	1.64952	1.07
GBPJPY ↑ 11 Buy		
Aug 24, 2011 01:09 PM	126.406	0.52
CADJPY ↑ 1 Buy		
Aug 22, 2011 05:36 PM	77.799	-0.13
GBPUSD ↑ 1 Buy		
Aug 22, 2011 05:36 PM	1.64862	0.12
GBPUSD ↓ 1 Sell		
Aug 22, 2011 03:24 PM	1.64959	0.60
GBPUSD ↓ 1 Sell		
Aug 22, 2011 03:24 PM	1.64957	0.59
USDCHF ↓ 1 Sell		

To view History, go to **Menu > History**.

This screen shows a list of your closed positions, ordered chronologically by closing date and time.

You can view the following information:

- the instrument
- buy/sell
- position amount
- close date/time
- position's close rate
- Net P/L

View Closed Position Details

Tap **>** button to see the Closed Position Details.



Position # 3634	
Instrument	Amount
GBPUSD	↑ 11 Buy
P/L	Net P/L
1.07	1.07
Open Rate	Open Date/Time
1.64952	Aug 24, 2011 01:21 PM
Close Rate	Close Date/Time
1.64968	Aug 24, 2011 01:24 PM
Reason	
Closed by Limit Order	

This screen shows a detailed view of a closed position.

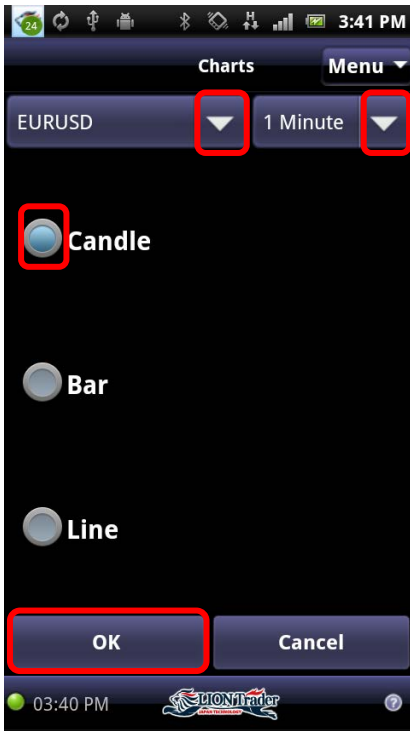
You can view the following information:

- the Instrument
- Buy/Sell
- position Amount
- position Open and Close Date/Time
- position Open Rate and Close Rate
- Gross P/L and Net P/L
- the Reason for closure

Press **BACK** key to return to the History screen.

Menu - Charts

View Charts



To create a Chart, go to **Menu > Charts**.

Select the desired instrument and the time interval from ▼.

Select the chart type (Candle, Bar, or Line).

Tap **OK**, you can create a new chart.



Chart Screen

Tap **Buy/Sell** button to open a new Buy/Sell position on the current instrument.

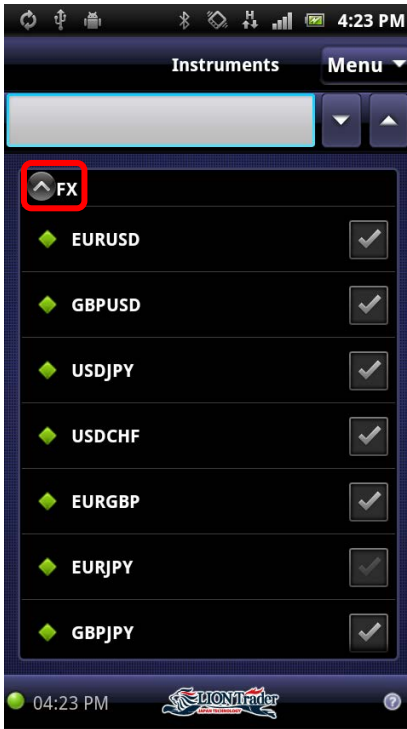
Tap **Setup** go back the screen of Charts.

Zoom in and out of the chart by using the - / + zoom feature.

You can tilt the phone horizontally to view the chart in horizontal mode. Tilt it vertically to return to vertical mode.

When you tilt the phone horizontally, you can scroll the chart left or right by dragging it horizontally.

Instrument Subscription



To subscribe or unsubscribe an Instrument, go to **Menu > Instruments**.

This screen allows you to subscribe to or unsubscribe from trading instruments.

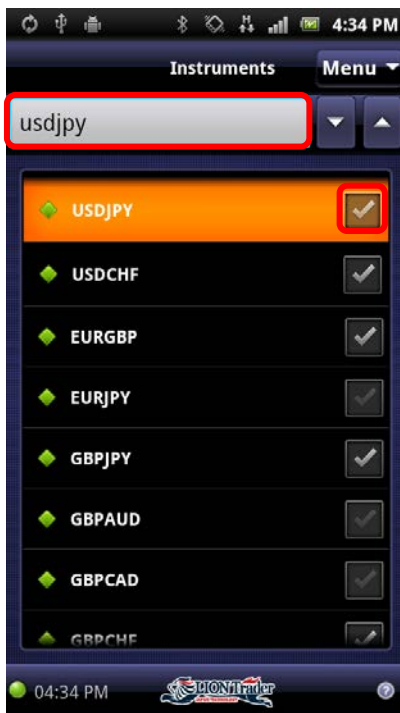
If instruments are grouped in folders, tap the arrow button to expand/collapse the folders.

When you unsubscribe* from an instrument, it will no longer be shown in your trading applications.

* You cannot unsubscribe from instruments on which you have open positions or pending orders.

* Instrument subscription is synced across all trading applications – iPhone/iPad, LION Trader, LION Web Trader, etc.

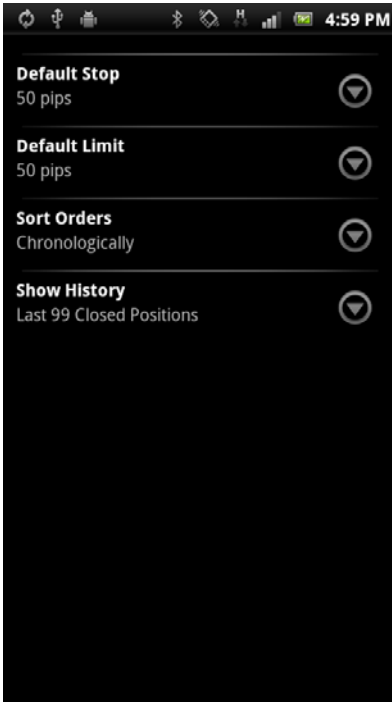
Search Instruments



Use the search box and the ▼▲ to search for a specific instrument(s).

Check the box to subscribe to an instrument. Uncheck the box to unsubscribe from an instrument.

Settings



To configure application settings, go to **Menu > Settings**.

Tap the **Default Stop**:

You can input a number to set the Default Stop proximity to your opening position.

Tap the **Default Limit**:

You can input a number to set the Default Limit proximity to your opening position.

Tap the **Sort Orders**:

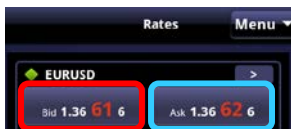
You can sort orders on the Orders' screen either by selecting proximity or in chronological order.

Tap the **Show History**:

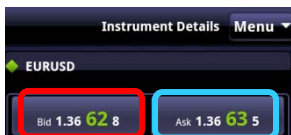
You can input a number to set how many of the most recent closed positions to show on the History screen.

Trade - Open a New Position (Market Order)

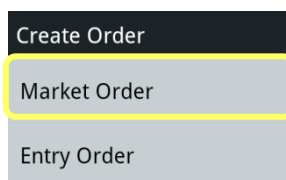
Open a New Position with Market Order



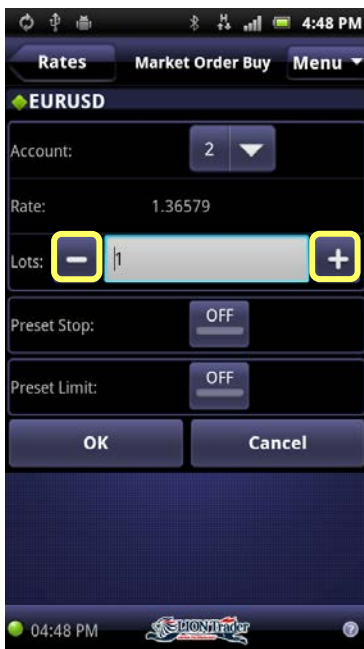
To open a new **sell** position, tap **Bid** on the **Rates/ Instrument Details** screen or tap **Sell** button on **Charts** screen.



To open a new **buy** position, tap **Ask** on the **Rates/ Instrument Details** screen or tap **Buy** button on **Charts** screen.



Select **Market Order** to open the Market Order screen.



Account: Shows the account on which the position will be created.

Rate: For a market order, this is the current market rate.

Lots: You can edit the order amount with the +/- buttons or by tapping the amount and entering a number.

(How to preset stop/limit order please go to page16.)

Tap **OK** to place your order.

Tap **Cancel** or **Rates** to cancel the order and return to the Rates screen.

Tap **Menu** button to open the application menu.

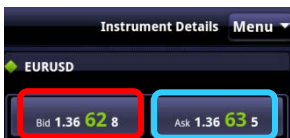
Trade - Entry Order

Create an Entry Stop/Limit Order

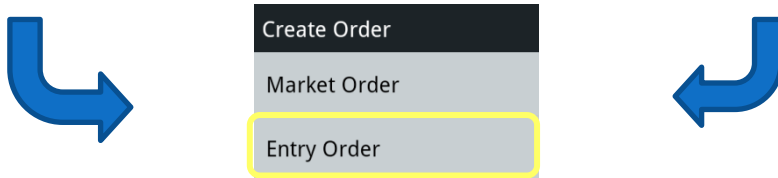
Entry Stop and Entry Limit orders are orders to open a new position at an off-market price. If that price is reached, the entry order will be triggered and an opening position will be created.



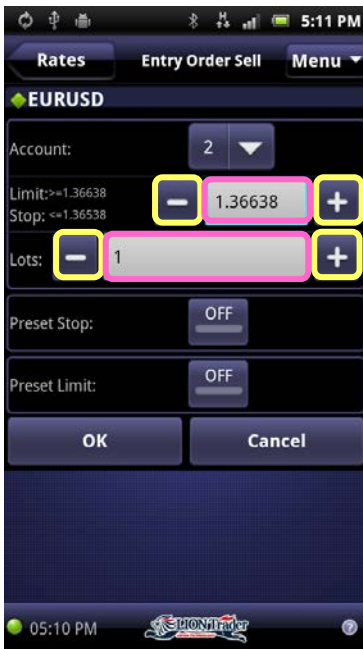
To create a new sell entry order, tap **Bid** on the **Rates/ Instrument Details** screen or tap **Sell** button on **Charts** screen.



To create a new buy entry order, tap **Ask** on the **Rates/ Instrument Details** screen or tap **Buy** button on **Charts** screen.



Select **Entry Order** to open the entry order Sell/Buy screen.



Account: Shows the account on which the order will be created.

Rate: For an Entry Order, the order rate is editable by using the +/- buttons or by tapping the rate and entering a number. The rate you enter must follow the parameters specified next to the edit box.

Lots: You can edit the order amount with the +/- buttons or by tapping the amount and entering a new one.

(How to preset stop/limit orders please go to page 17.)

Tap **OK** to place your order.

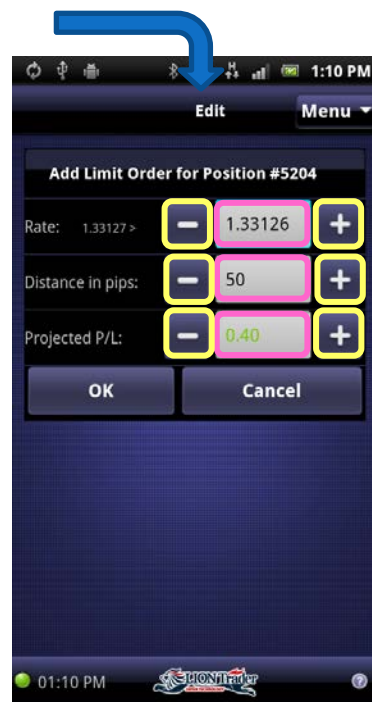
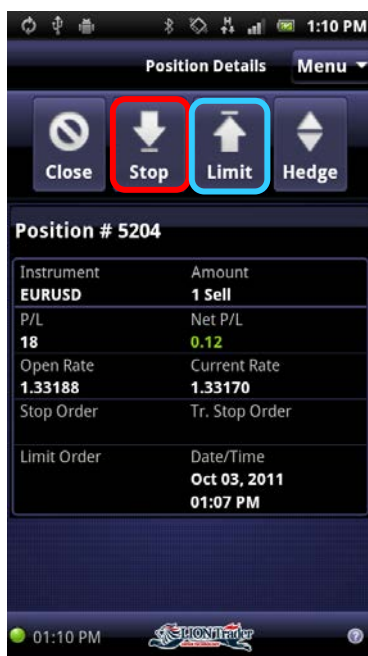
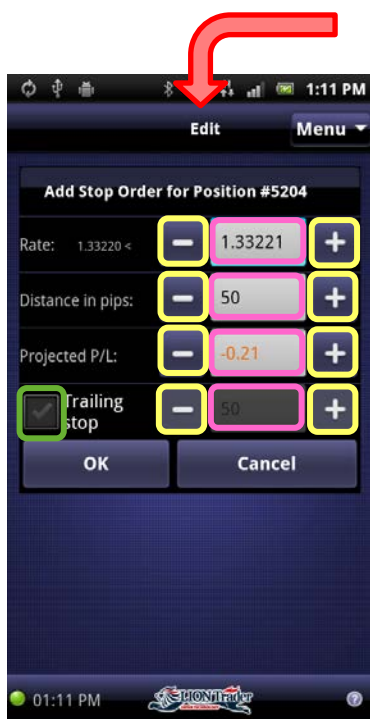
Tap **Cancel** or **Rates** to cancel the order and return to the Rates screen.

Tap **Menu** button to open the application menu.

Trade - Preset Stop/Limit Order for Open Positions or Entry Orders

Preset Stop/Limit Order for Open Positions

To preset stop/limit order for open positions, go to **Menu > Positions > Position Details > Stop/Limit**.



Tap **Stop/Limit** buttons

There are three ways to preset stop/limit order:

- edit the **Rate**
- edit the **Distance in Pips**
- edit the **Projected P/L**

When one of the boxes is changed, the other two are updated automatically.

You can change the order Rate with the +/- buttons or by tapping the rate and entering a number.

You can check the **Trailing Stop** box and enter a trailing stop distance.

The preset stop/limit rate must be within the range specified.

Tap **OK** to place your order.

Tap **Cancel** to cancel the order and return to the Position screen.

Tap **Menu** button to open the application menu.

Trade - Preset Stop/Limit Order for Open Positions or Entry Orders

Preset Stop/Limit Order for Entry Order

To preset stop/limit order for open positions, go to **Menu > Orders > Order Details > Edit**.

You can tap **Remove** to delete the order.

You can edit the **Stop/Limit Rate** and **Lots** of the Entry Order on the Edit Entry Order screen.



To preset a stop/limit Order of the entry order, tap the toggle button to switch it from **OFF** to **ON**.

You can change the order Rate with the +/- buttons or by tapping the rate and entering a number.

The preset stop/limit rate must be within the range specified.

You can check the **Trailing Stop** box and enter a trailing stop distance.

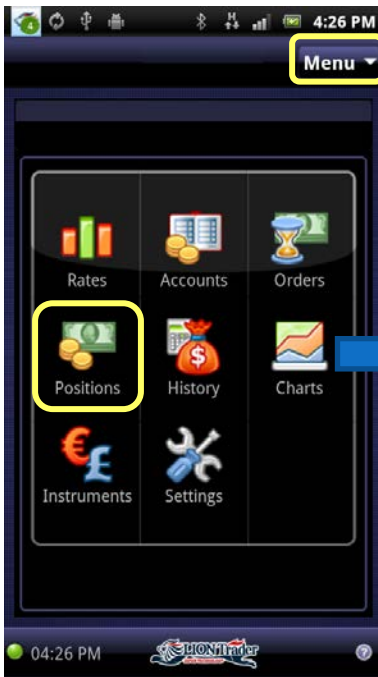
Tap **OK** to place your order.

Tap **Cancel** to cancel the order and return to the Order screen.

Tap **Menu** button to open the application menu.

Trade - Close Positions(Market Order)

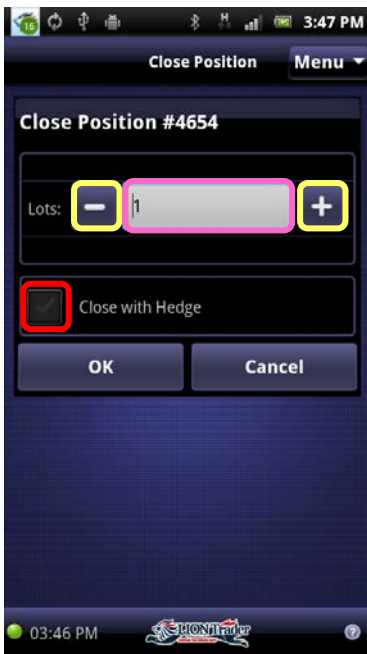
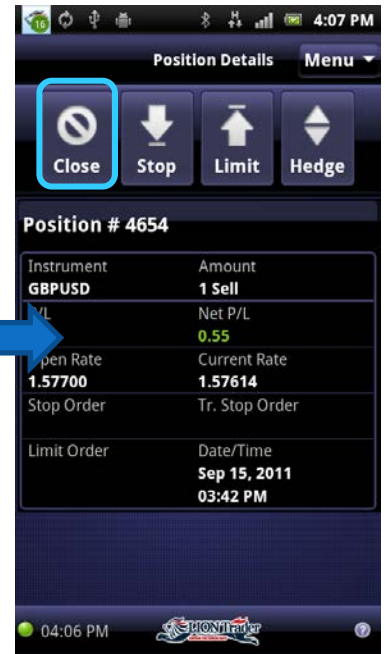
Close Positions with Market Order



To close a position, go to **Menu > Positions**



Select the position that you want to close.



Tap **Close** button to close a Position:

Lots: You can edit the **Lots** with the +/- buttons or by tapping the amount and entering a new one to change the position amount that you want to close .

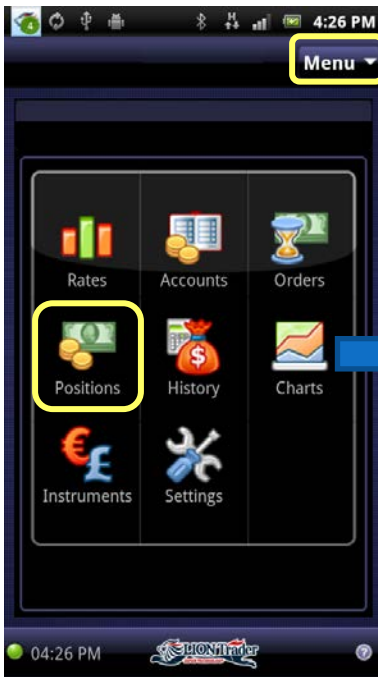
You can close positions with a hedge if you have hedged positions, by tapping **Close with Hedge**.

Tap **OK** to close your position.

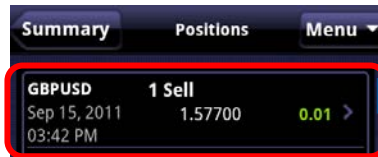
Tap **Cancel** to cancel the closure process and return to the Positions page.

Tap **Menu** button to open the application menu.

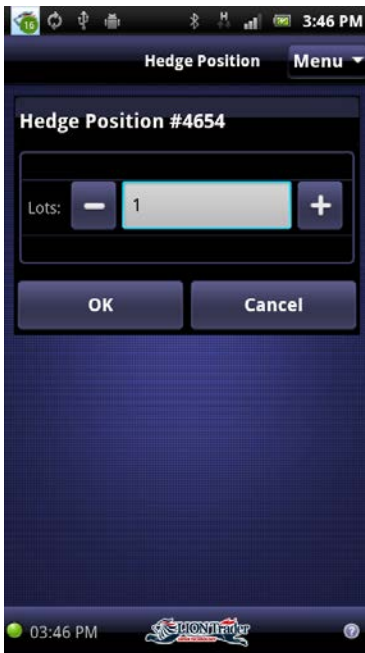
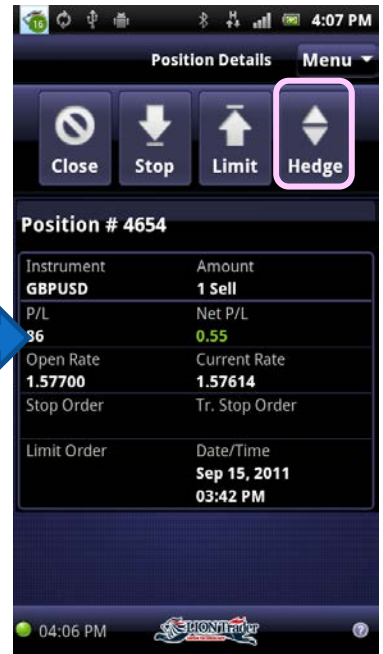
Hedge Positions



To hedge a position, go to **Menu > Positions**



Select the position that you want to hedge.



Tap **Hedge** button to hedge a Position:

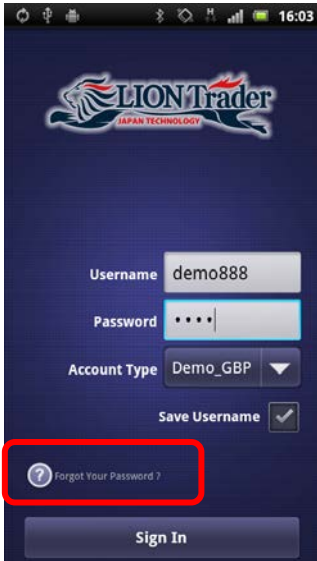
Lots: You can edit the **Lots** with the +/- buttons or by tapping the amount and entering a new one to change the position amount that you want to hedge .

Tap **OK** to hedge your position.

Tap **Cancel** to cancel the hedging process and return to the Positions page.

Tap **Menu** button to open the application menu.

Forgot Password

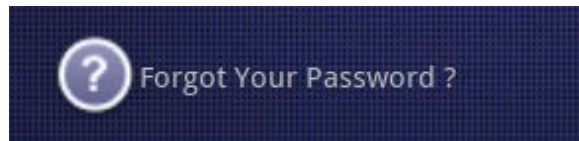


If you forgot your password:

Tap **Forgot your Password?** Icon on login screen.

Your password will be reset, and the new password will be sent to you by email.

Please note that emails will be sent to the registered email address that we have for you.



Status Bar



The Status Bar contains the following elements:


1. Connection status icon
(Green ● = connected; Gray ● = disconnected)

2. System time

Note: The time zone displayed in the system time can be changed by the trader through the settings of the **LION Trader** or **LION Web Trader** application.

You cannot change the time zone through **LION Adroid Trader**.

3. Help button.

Tap the  help button any time to open contextual help for the currently active screen.



System Message

There are two types of messages shown to the trader:

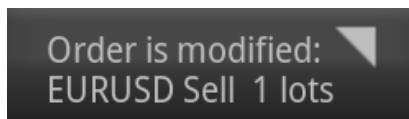


1. Pop Messages

Messages that are shown immediately as a result of some action or event. These include:

- Messages received by trader as a result of his actions. Examples: Insufficient Equity when trying to open a new position, entering order rate outside of permitted range, etc.
- Margin Call messages
- Lost connection messages
- Order reject messages

These messages are shown as a pop-up at the time they are received on the current screen.



2. Stored Messages

These messages are sent to the Notification bar of the Android device. They will accumulate in the notification panel of the Android device with the number of messages indicated in the green circle.

Tap **Clear All** to clear all messages, and the message icon will disappear from the notification bar.

You can press the **BACK** key to go to the last viewed page in the application without clearing the messages. The Message icon will remain in the notification bar.